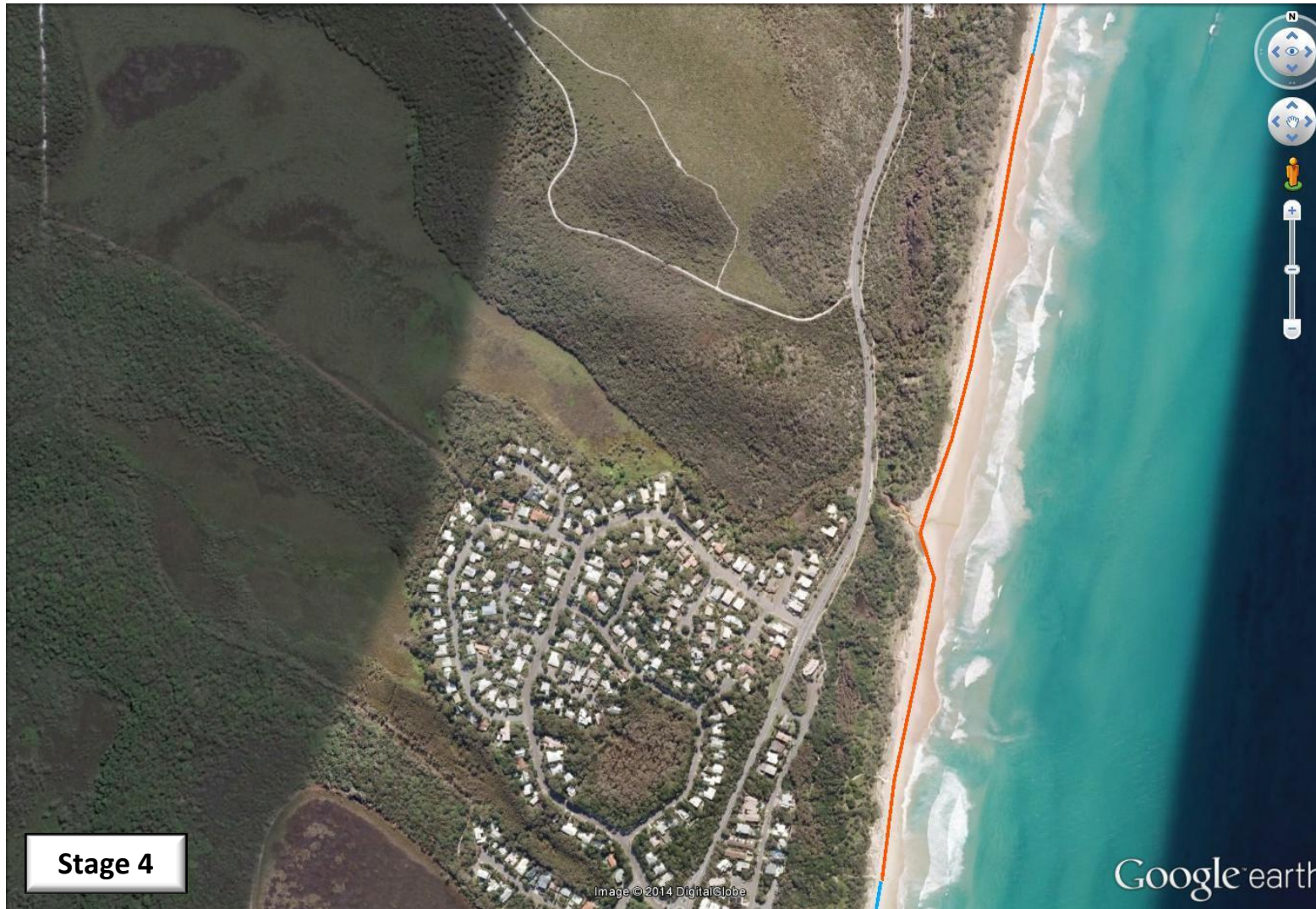


# Sunshine Coast Climate Change Relay – 21<sup>st</sup> of September 2014





**Stage 4**

All participants are reminded to take their own water, sunburn cream and hat.

-  Creek Crossing
-  River Crossing by Canoe
-  On sidewalk
-  Dog off-leash area
-  Dog off-leash area for part of stage

Please check SC Council website for full details on dog access to the beach.



Start	Finish	Start time	Distance	Tide	Other
Beach Access 44	Beach Access 47	6:43 AM	1.35 Km		
<p>Stage four features a shallow creek crossing, water in the creek is less than knee deep for an adult but will require removal of footwear.</p>					

**NB: All stages start and finish on the beach, i.e. where the beach access spills onto the beach.**