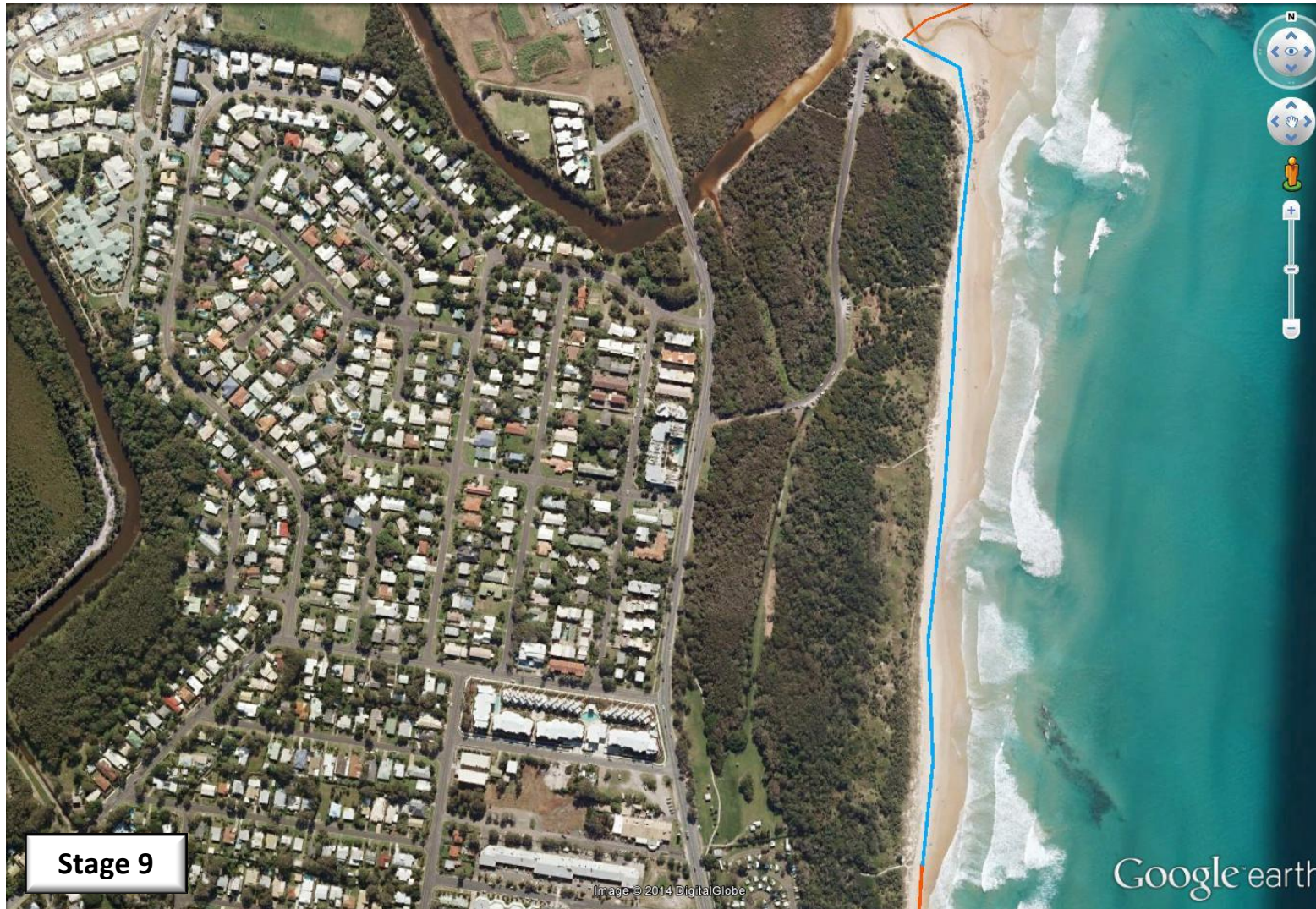


Sunshine Coast Climate Change Relay – 21st of September 2014



All participants are reminded to take their own water, sunburn cream and hat.



-  Creek Crossing
-  River Crossing by Canoe
-  On sidewalk
-  Dog off-leash area
-  Dog off-leash area for part of stage

Please check SC Council website for full details on dog access to the beach.



SUNSHINE COAST Environment Council



| Start | Finish | Start time | Distance | Tide | Other |
|-----------------|-----------------|------------|----------|---|---|
| Beach Access 69 | Beach Access 72 | 8:45 AM | 0.97 Km |  |  |
| | | | | | |

NB: All stages start and finish on the beach, i.e. where the beach access spills onto the beach.