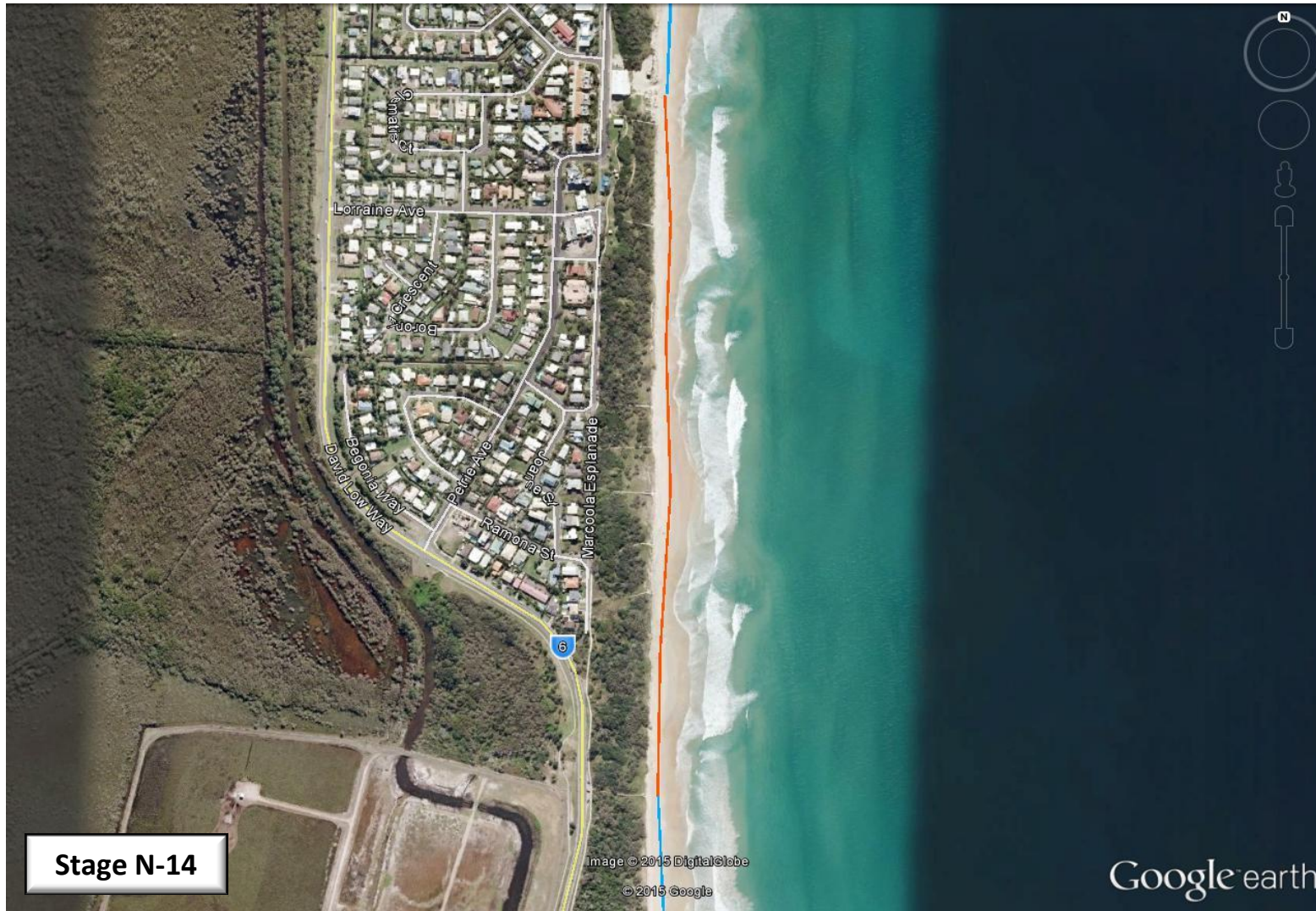


Sunshine Coast Climate Change Relay – 26 September 2015



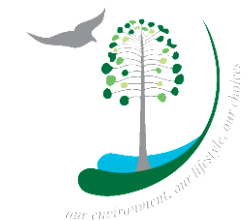
Stage N-14

Start	Finish	Start time	Distance	Tide	Other
Marcoola SLSC	Beach Access 111	3:34 PM	0.99		

Participants are reminded to take their own water, sunburn cream and hat.

- Creek Crossing
- River Crossing by Canoe
- On sidewalk
- Dog off-leash area
- Dog off-leash area for part of stage

Please check SC Council website for full details on dog access to the beach.



SUNSHINE COAST
Environment Council

NB: All stages start and finish on the beach, i.e. where the beach access spills onto the beach.