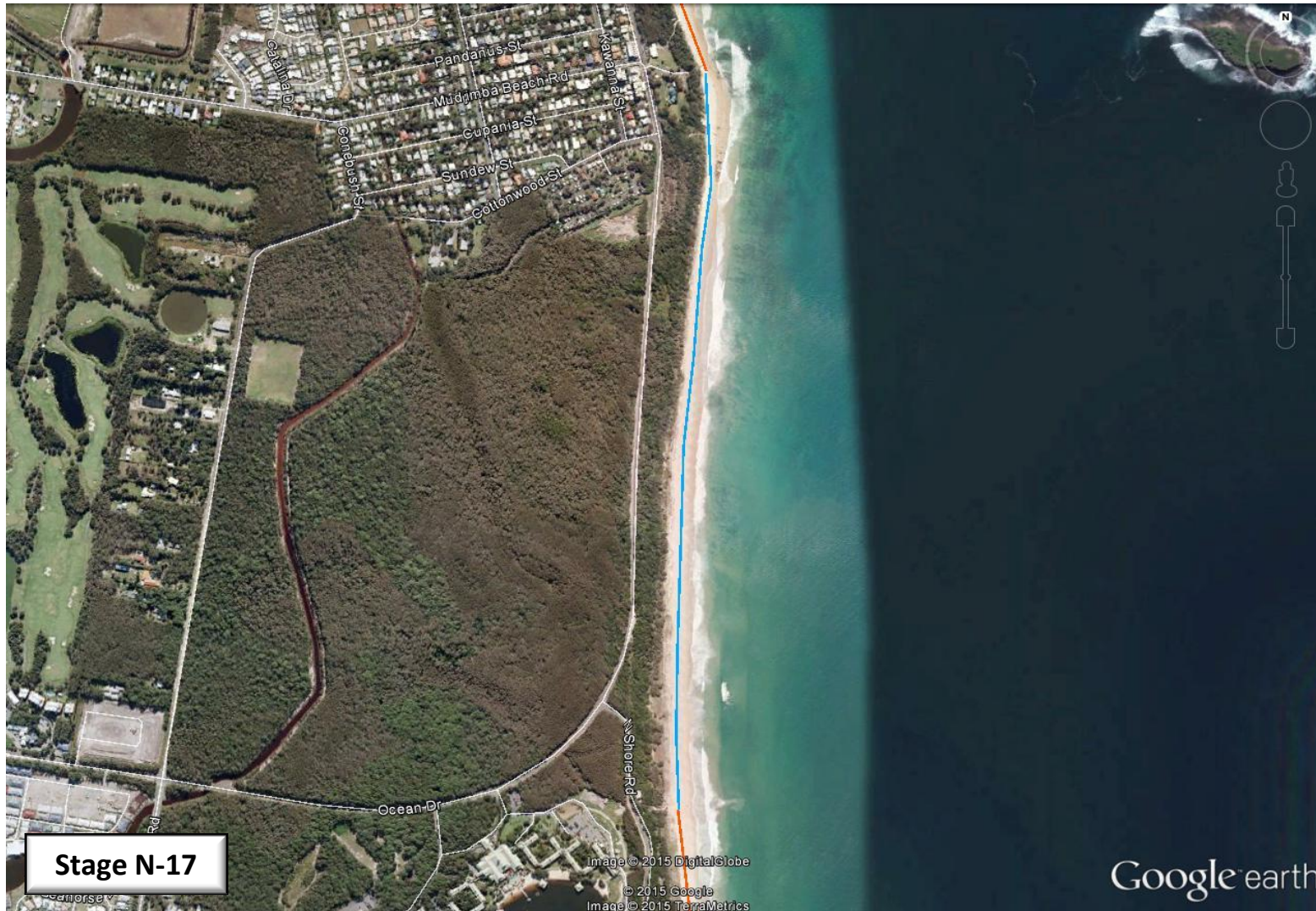


Sunshine Coast Climate Change Relay – 26 September 2015




Participants are reminded to take their own water, sunburn cream and hat.

-  Creek Crossing
-  River Crossing by Canoe
-  On sidewalk
-  Dog off-leash area
-  Dog off-leash area for part of stage

Please check SC Council website for full details on dog access to the beach.



SUNSHINE COAST
Environment Council

| Start | Finish | Start time | Distance | Tide | Other |
|---------------|------------------|------------|----------|---|-------|
| Mudjimba SLSC | Beach access 131 | 4:27 PM | 1.75 |  | |
| | | | | | |

NB: All stages start and finish on the beach, i.e. where the beach access spills onto the beach.