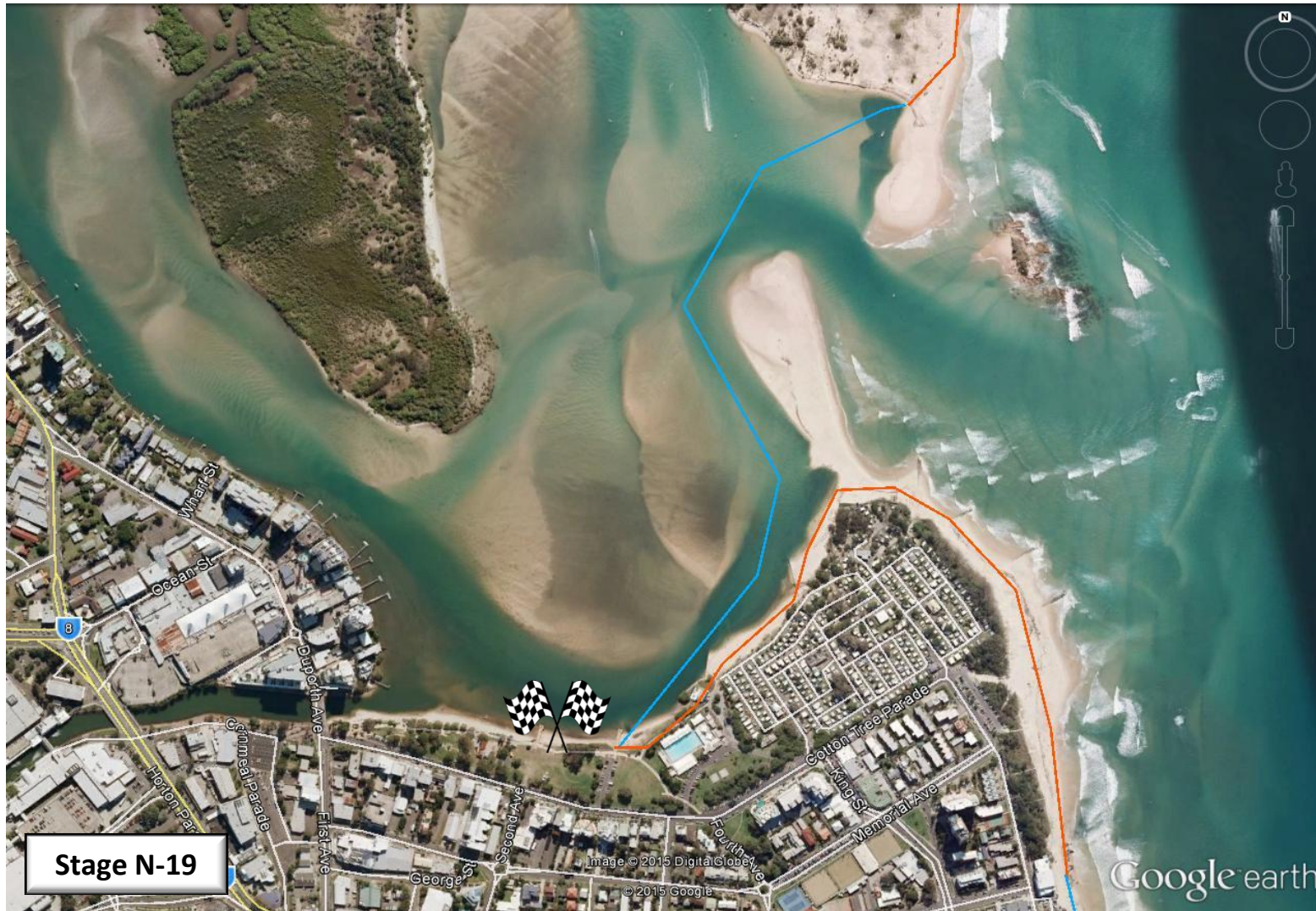


Sunshine Coast Climate Change Relay – 26 September 2015



Stage N-19



Participants are reminded to take their own water, sunburn cream and hat.

-  Creek Crossing
-  River Crossing by Canoe
-  On sidewalk
-  Dog off-leash area
-  Dog off-leash area for part of stage

Please check SC Council website for full details on dog access to the beach.



SUNSHINE COAST Environment Council

Start	Finish	Start time	Distance	Tide	Other
Pin Cushion Island	Cotton Tree Park	5:17 PM	1.21		
Stage N19 is a canoe leg and can only be completed in a canoe, kayak or SUP					

NB: All stages start and finish on the beach, i.e. where the beach access spills onto the beach.