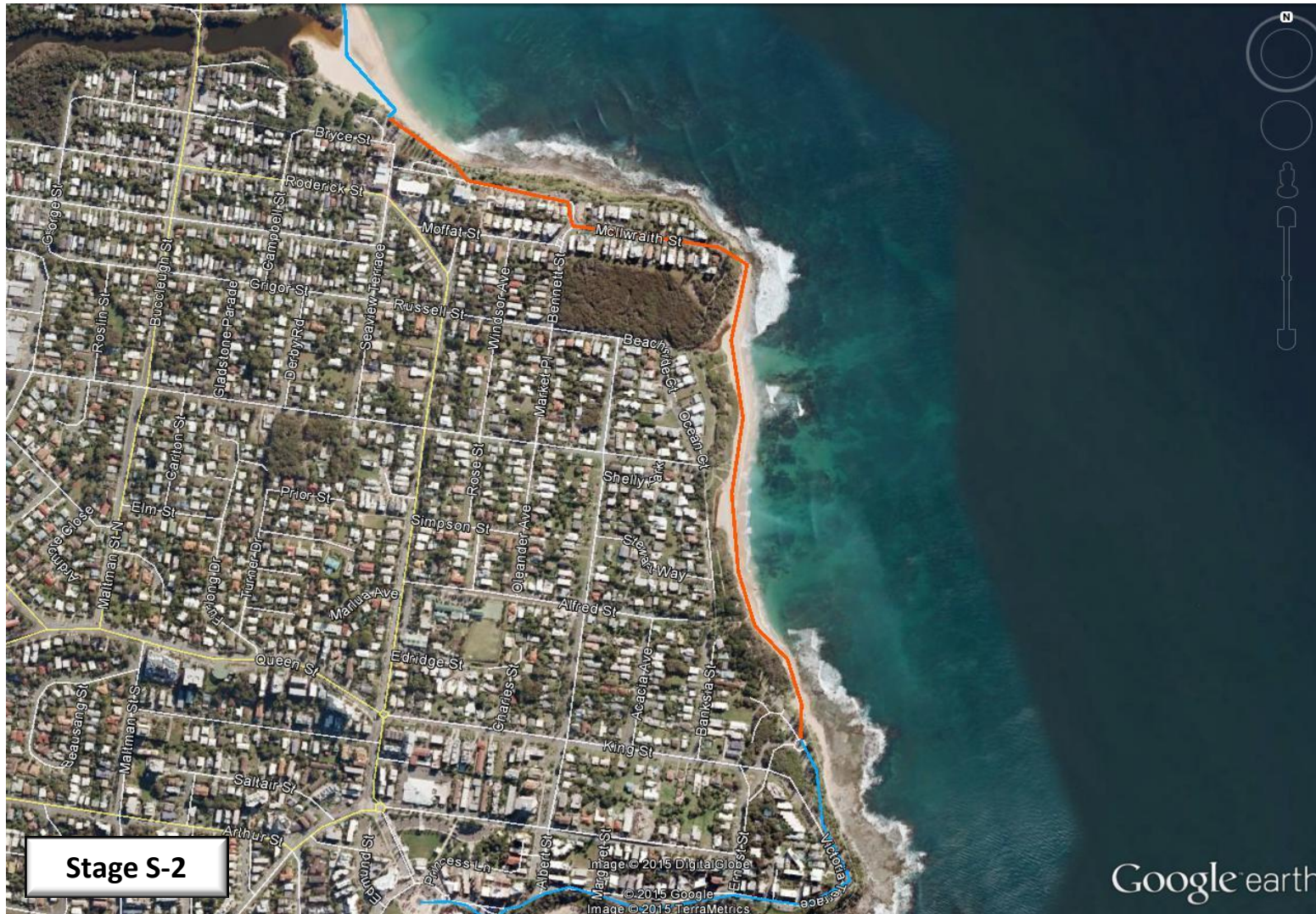


Sunshine Coast Climate Change Relay – 26 September 2015





Participants are reminded to take their own water, sunburn cream and hat.

-  Creek Crossing
-  River Crossing by Canoe
-  On sidewalk
-  Dog off-leash area
-  Dog off-leash area for part of stage

Please check SC Council website for full details on dog access to the beach.



SUNSHINE COAST Environment Council

Start	Finish	Start time	Distance	Tide	Other
Shelly beach	Moffat Beach	12:31 PM	1.68		
Parts of stage S2 travel along Queen of Colonies Parada and McIlwraith Street					

NB: All stages start and finish on the beach, i.e. where the beach access spills onto the beach.