

Kangaroo Island Resident Fare Changes (effective March 2022)

1. What are the new resident fares that are coming into effect from March 2022

Fare type	Fare	Current Fare	Savings
Adult	\$6.80	\$31.00	78%
Child – 3-14 years	\$3.40	\$16.00	79%
Infant – 0-2 years	FOC	FOC	No change
Concession AU Pensioner / Senior	\$5.10	\$16.00	68%
Student – 15-18 yrs	\$5.10	\$27.00	81%
Resident standard car up to 5 metres	\$65.00	\$98.00	34%

2. When will travel be available at these new fare levels?

Residents will be able to access these fares for travel from Monday 07 March 2022.

However please note that the first fare increase will take effect from 01 July 2022 – 30 June 2023 based on an annual indexation calculation in line with factors including wages, fuel and CPI growth

3. What will the price be for resident vehicles longer than the standard 5 metres?

Vehicles prices will be charged in increments of 1 metre eg \$65 for 5 metres is \$13 per metre – therefore a vehicle 5.1 metres will be \$78 (\$65 + \$13)

4. When will these fares be available to book?

Yes, the new fares will be bookable from 01 February 2022

5. Can these new fares be booked online?

Yes, the new fares will be bookable online from 01 February 2022

6. What is the process if the resident has bookings in the system at the higher fare?

Residents will be able to change their fare to the new fare and hold funds in credit for future use.

7. Will residents be able to book on any ferry?

If there is available space on a ferry these fares will be applicable.

8. Are there booking conditions with these new fares?

All bookings are subject to availability, however, please note that amendment fees and cancellation fees will apply to these new fares. The detail of these will be released when bookings open from 01 February 2022.

9. Will funds still be available to be held in credit for unused tickets at these new fares?

The ability to hold funds in credit should be available however subject to amendment or cancellation fees.

10. Will the fares increase each year?

Yes, the fares will increase from 01 July each year based on an annual indexation calculation in line with factors including wages, fuel and CPI growth

11. Can dates of travel be changed once booked?

Yes, however amendment fees will apply. The amendment fee structure has not been finalised at this time but will be made available once bookings are open.

12. Will the resident driver still travel free?

No, the driver will pay the applicable adult or concession fare

13. Will customers still be required to prove they are residents?

Yes, and a new system will be introduced to assist in ensuring eligible residents only are accessing these fares.

14. Is there space allocated specifically for residents?

No there is no specific deck or seat space/capacity allocated. Residents will book subject to availability as is the current practice.

15. Will there still be Family and Friends fares available?

A more dynamic pricing model will be introduced for visitors which will offer different fare types at different times of the day/week/year etc. When this model is in place all other discounted fares will be removed. A commencement date for this new model is yet to be set so in the meantime the friends and family fare will continue.

16. Will there be resident long weekend specials available?

No, these new fares will replace all existing resident long weekend and other specials.

17. Will the KIPK package still be available (SLC, Ferry, SLS)

The new ferry fares will be added to the coach transfer fares and offered as a bookable package

18. Will the cruiser fare still be available when these discounted fares start?

No, the cruiser fare will no longer be available.

19. Can a resident still travel free when accompanying a child for a transfer?

No, the child transfer free of charge will no longer apply and the resident will pay the equivalent new resident passenger fare.

20. Will residents need to show their drivers licence or other ID each time they travel, to confirm they are a resident?

Yes, there will be additional requirements to prove residency. The details of these are yet to be confirmed and will be advised prior to the new fares being introduced.

21. Will temporary KI residents (working on the island for 12 months) still be eligible for resident rates?

If those living on the island can show the required proof of residency for these fares then they will be eligible. If not, then they will be required to purchase the best non-resident fare on the day of travel.

22. Will SeaLink still provide sponsorship to sporting clubs etc?

SeaLink continues to be committed to supporting the community of Kangaroo Island through sponsorship and other support.

23. Will there still be off peak sailings at a cheaper resident vehicle price?

No, the \$65 fare is for all sailings. A further reduced resident vehicle fare will form part of the commencement of the contract offerings from 01 July 2024 when more vehicle capacity is introduced with the new larger ferries and increased timetable

24. Will the timetable change?

The timetable will not change until the introduction of the 2 new ferries from July 2024.

Kangaroo Island Resident Fare Changes (effective from July 2024)

1. What additional changes will occur to resident fares at the commencement of the new ferry contract effective 01 July 2024?

All fares offered from March 2022 will increase on 01 July each year. Therefore, from 01 July 2024 all fares listed below will have increased. An additional car fare will also be introduced at \$25 one way (please note this is the starting fare and will be indexed each year also)

Fare type	Fare	Current Fare	Savings
Adult	\$6.80	\$31.00	78%
Child	\$3.40	\$16.00	79%
Concession	\$5.10	\$16.00	68%
Student	\$5.10	\$27.00	81%
Resident standard car up to 5 metres	\$65.00	\$98.00	34%
Resident saver car fare up to 5 metres	\$25.00	\$79.00	68%

2. What will the price be for resident vehicles longer than the 5 metres?

Vehicle prices will be charged in increments of 1 metre eg \$65 standard fare for 5 metres is \$13 per metre – therefore a vehicle 5.1 metres will be \$78 (\$65 + \$13) and \$25 saver fare for 5 metres is \$5 per metre – therefore a vehicle 5.1 metres will be \$30 (\$25 + \$5)

3. Will there be limited space on the ferries at the Saver Fare level?

There will be more services offered at the Saver Fare level than the Standard fare level. At some times of the year during peak travel periods there may be limited space at the Saver Level however this will be balanced out with additional Saver Fares at other times.

4. What will the new ferries offer?

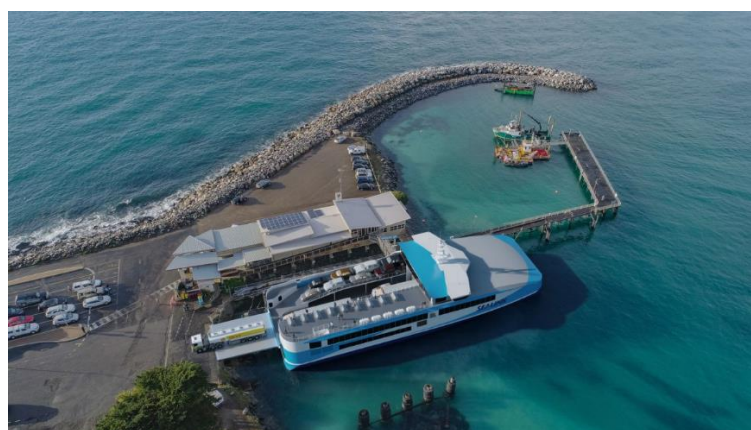
The two new modern vessels will have improved passenger amenities, reduced motion sickness design and drive through capability for vehicles, meaning there will be no requirement to turn vehicles or reverse vehicles onto the ferry.

Passengers will be able to remain in their vehicles to drive on and off the ferry.

Both vessels will be identical, are larger and have more vehicle capacity with approximately 80 standard cars spaces.

5. What will the new ferries look like?

The designs are yet to be finalised but the below design concepts that were put into our tender will give you an idea of how they will look.



6. Will there be changes to the infrastructure to accommodate these ferries?

Yes, the Government is investing \$22million in improved infrastructure at the ports and SeaLink will also be investing in infrastructure to accommodate the new ferries including new ramps at both ports and lay-over berth at Cape Jervis.

7. How many departures will be offered each day when the two new ferries are in operation?

Weekday Timetable	Return services per day Sept to April	Return services per day May - August
Current	At least 5	At least 5
From 01 July 2024	At least 11	At least 7
Weekend Timetable	Return services per day Sept to April	Return services per day May - August
Current	At least 5	At least 5
From 01 July 2024	At least 9	At least 7

Kangaroo Island Ferry Visitor Fares

1. Is there going to be any changes to the non-resident fares?

A more dynamic pricing model will be introduced for visitors which will offer different fare types at different times of the day/week/year etc. This is likely to be introduced in two stages – stage one in a more basic model using the capacity of the existing ferries and stage two when the new larger vessels are in operation.

2. Will all the fares that are available now be available in the future – eg friends/family/Premier Club.

No, when the more dynamic pricing model is in place all other discounted fares will be removed. A commencement date for this new model is yet to be set so in the meantime current fares will be offered, however it is likely this will change in the first half of next year.