



VILLAWOOD PAYS YOUR  
**BUILDER DEPOSIT**  
UP TO  
**\$25K\***  
Get into your new home faster!

# HOME AND LAND

Images shown are for illustrative purposes only and may not represent the final product such as lighting, window furnishings, timber look garage door & timber windows. Facade details including entry door and window sizing may vary between house types. Pricing also excludes features such as fencing, landscaping, letterbox, decking, driveway and any notable features of the facade. Please speak with your sales consultant for further details.

LOT 1714, DELARAY ESTATE, CLYDE NORTH (392M2)

FLOOR PLAN: DARWIN 22\_207  
FACADE: THORSEBOURNE

FIXED PRICE

**\$581,317**

FIRST HOME OWNERS PRICE \$571,317

4 🚗 2 🍷 2 🚗 2 🚗 22sq 📏

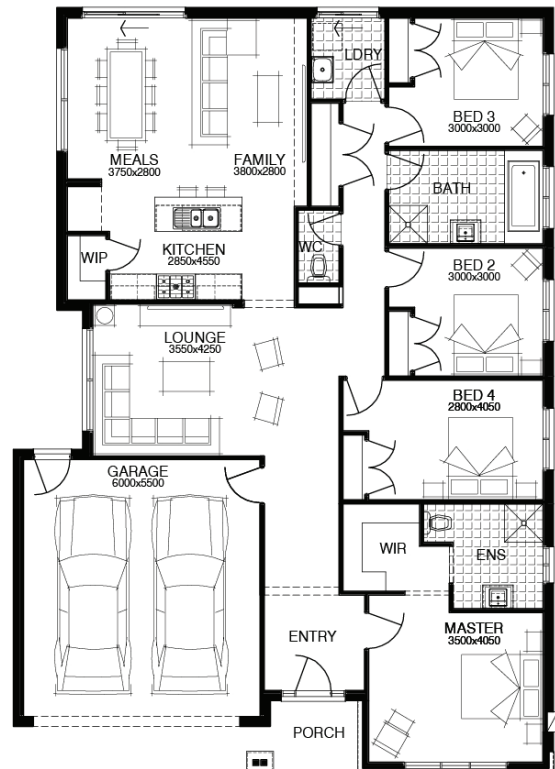
Select \$20k of upgrades

*Good One, Gary!*



## PACKAGE INCLUSIONS:

- ▼ WELLNESS - DARWIN ESSENTIALS PACK
- ▼ DEVELOPER & COUNCIL REQS
- ▼ PART A & B TERMITE PROTECTION
- ▼ 3 COAT PAINT APPLICATION
- ▼ 450MM EAVES TO FACADE
- ▼ SECTIONAL LIFT GARAGE DOOR
- ▼ 900MM STAINLESS STEEL APPLIANCES
- ▼ TILED SHOWER BASES



For enquiries please contact:

Elizabeth Blake  
0437 064 004  
Simonds.com.au

Metro East

VIC  
elizabeth.blake@simonds.com.au



All Fixed Price Home and Land packages are subject to Developer and Council approval and is based on Simonds standard floor plan with preferred siting (without alterations). Package Price does not include stamp duty, government, legal or bank charges. Community Infrastructure Levy and Asset Protection Permit are not included in pricing and is to be arranged by the client directly with the Developer (if applicable). Any alterations may incur additional charges. Confirm land price and availability prior to purchase. Simonds reserves the right to withdraw or amend pricing, inclusions and promotion at any time without notice. Please refer to the terms and conditions at [www.simonds.com.au/terms-and-conditions](http://www.simonds.com.au/terms-and-conditions). This package applies to VIC Range range only. Please speak with your sales consultant for further details. Pricing is current at 06/07/2019.