



# HOME AND LAND

Images shown are for illustrative purposes only and may not represent the final product such as lighting, window furnishings, timber look garage door & timber windows. Façade details including entry door and window sizing may vary between house types. Pricing also excludes features such as fencing, landscaping, letterbox, decking, driveway and any notable features of the façade. Please speak with your sales consultant for further details.

LOT 1456, MERIDIAN, CLYDE NORTH (448M2)

FLOOR PLAN: ALTON 24\_223  
FACADE: MAWSON

**FIXED PRICE**

# \$547,628

FIRST HOME OWNERS PRICE \$537,628

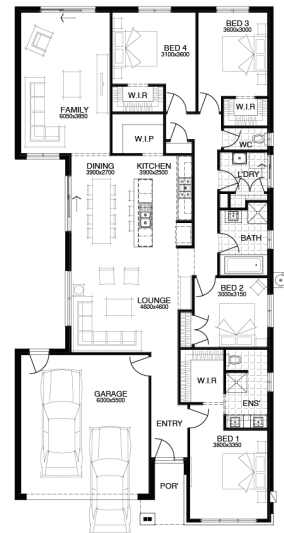
4 🚗 2 🍷 2 🚗 2 🚗 24sq 📏

**BIRTHDAY BONUS\***

**\$19k** of options for \$0

## PACKAGE INCLUSIONS:

- ▼ \$19,000 OF FREE UPGRADES
- ▼ DEVELOPER AND COUNCIL REQUIREMENTS
- ▼ UP TO 100M2 (SINGLE STOREY) CAT 1 OR 180M2 (DOUBLE STOREY) CAT 2 CARPET
- ▼ UP TO 50M2 TIMBER FLOORING LAMINATE
- ▼ UP TO 40M2 OF 100MM COLOURED THROUGH CONCRETE
- ▼ REMOTE CONTROL TO GARAGE DOOR
- ▼ SECTIONAL LIFT GARAGE DOOR
- ▼ 20MM CAESARSTONE BENCH TOP TO KITCHEN



**For enquiries please contact:**

Silvia Marrero  
0418 539 506  
[Simonds.com.au](http://Simonds.com.au)

Metro East

VIC  
[silvia.marrero@simonds.com.au](mailto:silvia.marrero@simonds.com.au)

