

**SIMONDS**  
BUILDING HOMES SINCE 1949



FIXED  
**GUARANTEE**  
PRICE

**SILVER**  
PACK INCLUDED



## HOME AND LAND

Images shown are for illustrative purposes only and may not represent the final product such as lighting, window furnishings, timber look garage door & timber windows. Façade details including entry door and window sizing may vary between house types. Pricing also excludes features such as fencing, landscaping, letterbox, decking, driveway and any notable features of the façade. Please speak with your sales consultant for further details.

LOT 58, PAYNESVILLE PARK ESTATE, PAYNESVILLE (855M2)

FLOOR PLAN: BULLER 26\_248  
FACADE: MAWSON

FIXED PRICE

# \$397,441

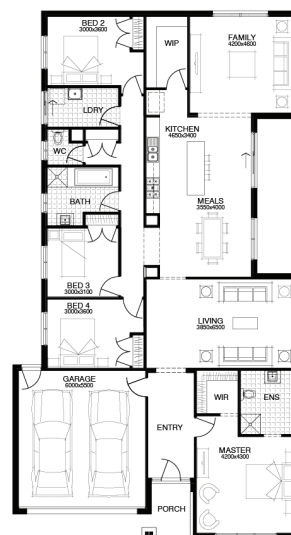
FIRST HOME OWNERS PRICE \$377,441

4 🚗 2 🍷 2 🚗 2 🚗 26sq 📏

CHOOSE YOUR STYLE PACK  
**SILVER GOLD PLATINUM**  
GARY'S STYLE ANGELS

### PACKAGE INCLUSIONS:

- ▼ LAMINATE TIMBER LOOK FLOORING TO ENTRY, KITCHEN & LIVING
- ▼ CARPET TO REMAINDER OF HOME
- ▼ 20MM CAESARSTONE BENCHTOP TO KITCHEN
- ▼ OVERHEAD CUPBOARDS TO KITCHEN
- ▼ BATHROOM ACCESSORIES
- ▼ BRICKWORK OVER WINDOWS
- ▼ UP TO 40M2 COLOUR THROUGH CONCRETE DRIVEWAY
- ▼ REMOTE TO GARAGE DOOR
- ▼ 20 DOWNLIGHTS



For enquiries please contact:

Chris Cullen  
0412 894 369  
Simonds.com.au

East Gippsland

VIC  
chris.cullen@simonds.com.au