



SILVER
PACK INCLUDED



HOME AND LAND

Images shown are for illustrative purposes only and may not represent the final product such as lighting, window furnishings, timber look garage door & timber windows. Façade details including entry door and window sizing may vary between house types. Pricing also excludes features such as fencing, landscaping, letterbox, decking, driveway and any notable features of the façade. Please speak with your sales consultant for further details.

LOT 50, THE RIDGE ESTATE, YINNAR (591M2)

FLOOR PLAN: CHESTERTON 21_203
FACADE: MAWSON

FIXED PRICE

\$319,565

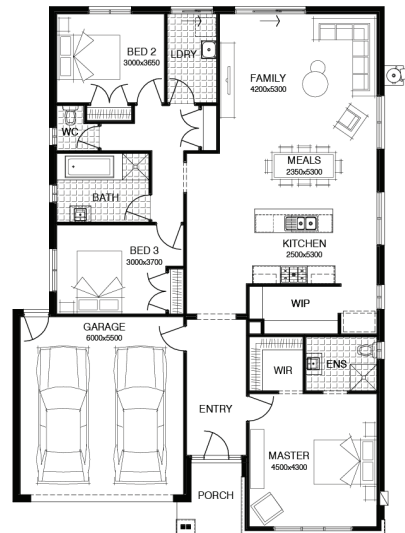
FIRST HOME OWNERS PRICE \$299,565

3 🚗 2 🍷 2 🚗 1 🏠 21sq 📏



PACKAGE INCLUSIONS:

- ▼ LAMINATE TIMBER LOOK FLOORING TO ENTRY, KITCHEN & LIVING
- ▼ CARPET TO REMAINDER OF HOME
- ▼ 20MM CAESARSTONE BENCHTOP TO KITCHEN
- ▼ OVERHEAD CUPBOARDS TO KITCHEN
- ▼ BATHROOM ACCESSORIES
- ▼ BRICKWORK OVER WINDOWS
- ▼ UP TO 40M2 COLOUR THROUGH CONCRETE DRIVEWAY
- ▼ REMOTE TO GARAGE DOOR
- ▼ 20 DOWNLIGHTS



For enquiries please contact:

Aaron Wilson
0413 713 082
Simonds.com.au

Central Gippsland

VIC
aaron.wilson@simonds.com.au

