

**SIMONDS**  
BUILDING HOMES SINCE 1949



\$7,000  
GALLERY  
VOUCHER

# HOME AND LAND

Images shown are for illustrative purposes only and may not represent the final product such as lighting, window furnishings, timber look garage door & timber windows. Façade details including entry door and window sizing may vary between house types. Pricing also excludes features such as fencing, landscaping, letterbox, decking, driveway and any notable features of the façade. Please speak with your sales consultant for further details.

LOT 21, PARKVIEW ESTATE, ECHUCA (701M2)

FLOOR PLAN: BOGONG 30\_281  
FACADE: BELLARINE

FROM\*  
**\$423,631**

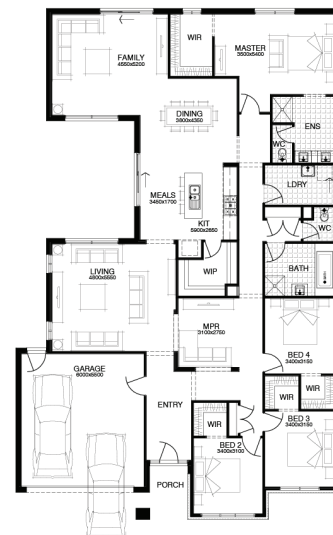
FIRST HOME OWNERS PRICE \$403,631

4 🚗 2 🍷 2 🚗 2 🚗 30sq 📏

BIRTHDAY BONUS\*  
**\$19k** of options for \$0

## PACKAGE INCLUSIONS:

- \$19,000 OF FREE UPGRADES
- DEVELOPER AND COUNCIL REQUIREMENTS
- UP TO 100M2 (SINGLE STOREY) CAT 1 OR 180M2 (DOUBLE STOREY) CAT 2 CARPET
- UP TO 50M2 TIMBER FLOORING LAMINATE
- UP TO 40M2 OF 100MM COLOURED THROUGH CONCRETE
- REMOTE CONTROL TO GARAGE DOOR
- SECTIONAL LIFT GARAGE DOOR
- 20MM CAESARSTONE BENCH TOP TO KITCHEN



For enquiries please contact:  
Christina Nicholas  
0428 370 328  
Simonds.com.au

Echuca  
ECHUCA VIC 3564  
christina.nicholas@simonds.com.au



\*From pricing is based on standard plan, builders preferred siting, site costs allowance, and is subject to extreme site changes beyond our reasonable control and unknown at the time of print. All packages are subject to Developer and Council approval. Package Price does not include stamp duty, government, legal or bank charges. Community Infrastructure Levy and Asset Protection Permit are not included in pricing and is to be arranged by the client directly with the Developer (if applicable). Any alterations may incur additional charges. Confirm land price and availability prior to purchase. Simonds reserves the right to withdraw or amend pricing, inclusions and promotion at any time without notice. \*Please refer to the terms and conditions at [www.simonds.com.au/terms-and-conditions](http://www.simonds.com.au/terms-and-conditions). This package applies to VIC Range range only. Please speak with your sales consultant for further details. Pricing is current at 04/12/2019.