



# FIXED PRICE HOME AND LAND

Images shown are for illustrative purposes only and may not represent the final product such as lighting, window furnishings, timber look garage door & timber windows. Façade details including entry door and window sizing may vary between house types. Pricing also excludes features such as fencing, landscaping, letterbox, decking, driveway and any notable features of the façade. Please speak with your sales consultant for further details.

LOT 1, Park Lanes Estate, LUCKNOW (783M2)

FLOOR PLAN: Chervil 21\_202  
FACADE: Amber

# \$329,126

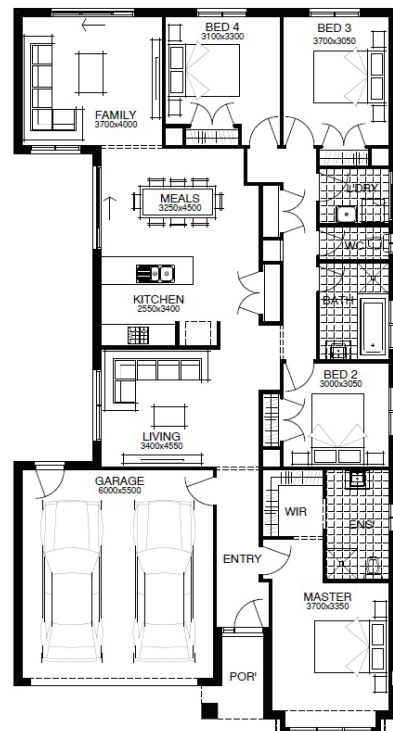
FIRST HOME OWNERS PRICE \$309,126

4 🚗 2 🌧️ 2 🚗 2 🛏️ 21sq 📏

**WELLNESS LIVES HERE**  
*You should too.*

## PACKAGE INCLUSIONS:

- ▶ LIFETIME STRUCTURAL GUARANTEE
- ▶ DEVELOPER & COUNCIL REQs
- ▶ 450MM EAVES TO FACADE
- ▶ KEYED WINDOW LOCKS TO ALL OPENABLE WINDOWS
- ▶ 3 COAT PAINT APPLICATION
- ▶ SECTIONAL LIFT GARAGE DOOR
- ▶ TILED SHOWER BASE
- ▶ FINANCE SOLUTIONS AVAILABLE
- ▶ ... AND MUCH MORE!



For enquiries please contact:  
Chris Cullen  
0412 894 369  
simondsxpress.com.au

VIC  
East Gippsland  
chris.cullen@simonds.com.au