



# HOME AND LAND

Images shown are for illustrative purposes only and may not represent the final product such as lighting, window furnishings, timber look garage door & timber windows. Façade details including entry door and window sizing may vary between house types. Pricing also excludes features such as fencing, landscaping, letterbox, decking, driveway and any notable features of the façade. Please speak with your sales consultant for further details.

LOT 138, SIENNA RISE ESTATE, PLUMPTON (315M2)

FLOOR PLAN: ARCHER 19\_176  
FACADE: GORDON

FIXED PRICE

# \$529,003

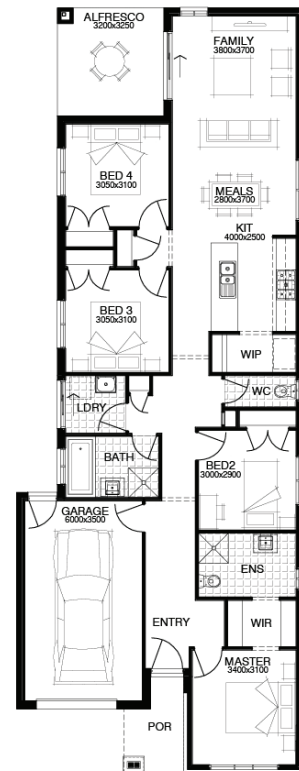
FIRST HOME OWNERS PRICE \$519,003

4 🚗 2 🍷 1 🚗 1 🏠 19sq 📏



## PACKAGE INCLUSIONS:

- ▼ WELLNESS - DARWIN ESSENTIALS PACK
- ▼ DEVELOPER & COUNCIL REQS
- ▼ PART A & B TERMITE PROTECTION
- ▼ 3 COAT PAINT APPLICATION
- ▼ 450MM EAVES TO FACADE
- ▼ SECTIONAL LIFT GARAGE DOOR
- ▼ KEYED WINDOW LOCKS TO ALL OPENABLE WINDOWS
- ▼ 600MM STAINLESS STEEL APPLIANCES
- ▼ TILED SHOWER BASES
- ▼ INTERNAL & EXTERNAL PACKS AVAILABLE



For enquiries please contact:

Jen Chua-Murray  
0455226316  
Simonds.com.au

Metro West

VIC  
jen.chua-murray@simonds.com.au



All Fixed Price Home and Land packages are subject to Developer and Council approval and is based on Simonds standard floor plan with preferred siting (without alterations). Package Price does not include stamp duty, government, legal or bank charges. Community Infrastructure Levy and Asset Protection Permit are not included in pricing and is to be arranged by the client directly with the Developer (if applicable). Any alterations may incur additional charges. Confirm land price and availability prior to purchase. Simonds reserves the right to withdraw or amend pricing, inclusions and promotion at any time without notice. Please refer to the terms and conditions at [www.simonds.com.au/terms-and-conditions](http://www.simonds.com.au/terms-and-conditions). This package applies to VIC New Living Small Lot range only. Please speak with your sales consultant for further details. Pricing is current at 22/08/2019.