

Xpress
Built by SIMONDS



FIXED
PRICE
PACKAGE



**FIXED PRICE
HOME AND LAND**

VILLAWOOD PAYS YOUR
BUILDER DEPOSIT
UP TO
\$25K*
Get into your new home faster!

Images shown are for illustrative purposes only and may not represent the final product such as lighting, window furnishings, timber look garage door & timber windows. Façade details including entry door and window sizing may vary between house types. Pricing also excludes features such as fencing, landscaping, letterbox, decking, driveway and any notable features of the façade. Please speak with your sales consultant for further details.

LOT 626, Albright Estate, Truganina (487M2)

FLOOR PLAN: Sage 24_224
FACADE: Asmara

\$611,525

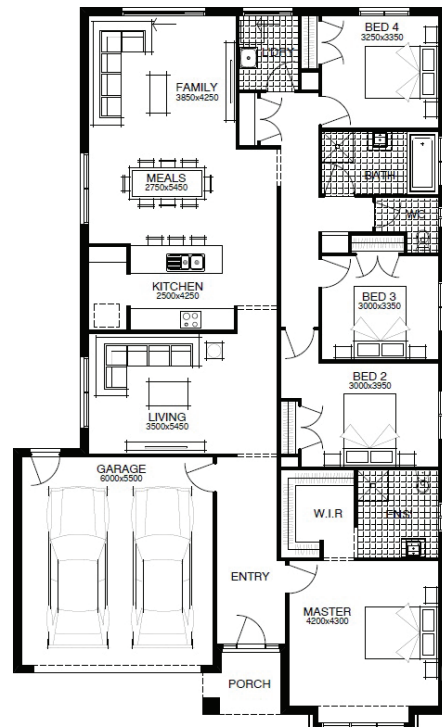
FIRST HOME OWNERS PRICE \$601,525

4 🚗 2 🌧️ 2 🚗 2 🛏️ 24sq 📏

WELLNESS LIVES HERE
You should too.

PACKAGE INCLUSIONS:

- ▶ DEVELOPER & COUNCIL REQ'S
- ▶ WELLNESS - DARWIN ESSENTIALS PACK
- ▶ DARWIN STAGE 1 WATER FILTRATION SYSTEM
- ▶ DARWIN AIR FILTER AND GRILLE
- ▶ 5X DARWIN CIRCADIAN CAPABLE DOWNLIGHTS TO MASTER BEDROOM
- ▶ DARWIN HUB
- ▶ 3 COAT PAINT APPLICATION
- ▶ SECTIONAL LIFT GARAGE DOOR
- ▶ TILED SHOWER BASE



For enquiries please contact:
Jen Chua-Murray
0455226316
simondsxpress.com.au

VIC
Metro West
jen.chua-murray@simonds.com.au



All Fixed Price Home and Land packages are subject to Developer and Council approval and is based on Simonds standard floor plan with preferred siting (without alterations). Package Price does not include stamp duty, government, legal or bank charges. Community Infrastructure Levy and Asset Protection Permit are not included in pricing and is to be arranged by the client directly with the Developer (if applicable). Any alterations may incur additional charges. Confirm land price and availability prior to purchase. Simonds reserves the right to withdraw or amend pricing, inclusions and promotion at any time without notice. Please refer to the terms and conditions at www.simonds.com.au/terms-and-conditions. This package applies to VIC Xpress range only. Please speak with your sales consultant for further details. Pricing is current at 12/05/2019.