



# FIXED PRICE HOME AND LAND

Images shown are for illustrative purposes only and may not represent the final product such as lighting, window furnishings, timber look garage door & timber windows. Façade details including entry door and window sizing may vary between house types. Pricing also excludes features such as fencing, landscaping, letterbox, decking, driveway and any notable features of the façade. Please speak with your sales consultant for further details.

LOT 118, Halycon Estate, Armstrong Creek (350M2)

FLOOR PLAN: Burnet 18\_172  
FACADE: Autumn

# \$439,397

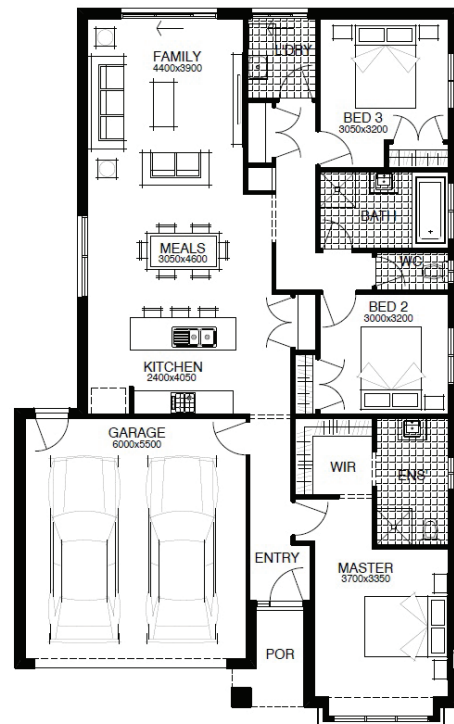
FIRST HOME OWNERS PRICE \$419,397

**WELLNESS LIVES HERE**  
*You should too.*

3 🚗 2 🌧️ 2 🚗 1 🛏️ 18sq 📏

## PACKAGE INCLUSIONS:

- ▶ LIFETIME STRUCTURAL GUARANTEE
- ▶ DEVELOPER & COUNCIL REQ'S
- ▶ 450MM EAVES TO FACADE
- ▶ KEYED WINDOW LOCKS TO ALL OPENABLE WINDOWS
- ▶ 3 COAT PAINT APPLICATION
- ▶ SECTIONAL LIFT GARAGE DOOR
- ▶ TILED SHOWER BASE
- ▶ FINANCE SOLUTIONS AVAILABLE
- ▶ ... AND MUCH MORE!



For enquiries please contact:  
Bruno Esposti  
0435219103  
simondsxpress.com.au

GEELONG VIC 3220  
Geelong  
bruno.esposti@simonds.com.au

