



SILVER
PACK INCLUDED



HOME AND LAND

Images shown are for illustrative purposes only and may not represent the final product such as lighting, window furnishings, timber look garage door & timber windows. Façade details including entry door and window sizing may vary between house types. Pricing also excludes features such as fencing, landscaping, letterbox, decking, driveway and any notable features of the façade. Please speak with your sales consultant for further details.

LOT 113, MURRAY GARDENS ESTATE, ECHUCA (713M2)

FLOOR PLAN: MEBBIN 25_236
FACADE: MACKAY

FROM*

\$401,100

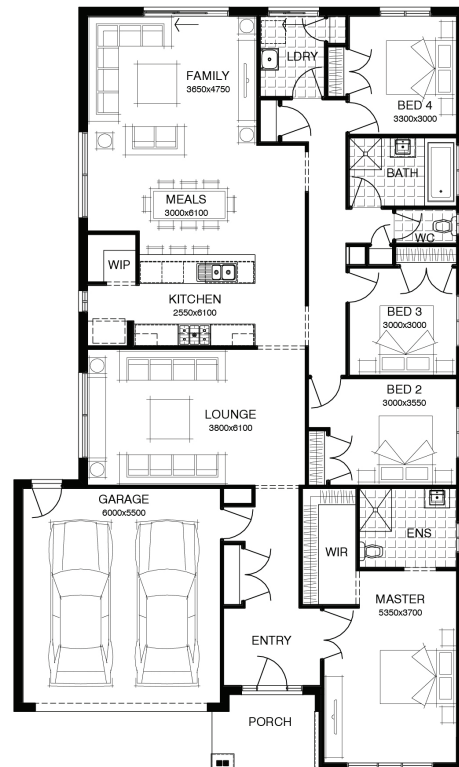
FIRST HOME OWNERS PRICE \$381,100

4 🚗 2 🍷 2 🚗 2 🚗 25sq 📏



PACKAGE INCLUSIONS:

- ▼ LAMINATE TIMBER LOOK FLOORING TO ENTRY, KITCHEN & LIVING
- ▼ CARPET TO REMAINDER OF HOME
- ▼ 20MM CAESARSTONE BENCHTOP TO KITCHEN
- ▼ OVERHEAD CUPBOARDS TO KITCHEN
- ▼ BATHROOM ACCESSORIES
- ▼ BRICKWORK OVER WINDOWS
- ▼ UP TO 40M2 COLOUR THROUGH CONCRETE DRIVEWAY
- ▼ REMOTE TO GARAGE DOOR
- ▼ 20 DOWNLIGHTS



For enquiries please contact:

Christina Nicholas
0428 370 328
Simonds.com.au

Echuca

ECHUCA VIC 3564
christina.nicholas@simonds.com.au

MURRAY
GARDENS