

SIMONDS
BUILDING HOMES SINCE 1949



\$7,000
GALLERY
VOUCHER



HOME AND LAND

Images shown are for illustrative purposes only and may not represent the final product such as lighting, window furnishings, timber look garage door & timber windows. Façade details including entry door and window sizing may vary between house types. Pricing also excludes features such as fencing, landscaping, letterbox, decking, driveway and any notable features of the façade. Please speak with your sales consultant for further details.

LOT 73, PARKVIEW ESTATE, ECHUCA (648M2)

FLOOR PLAN: CHESTERTON 21_203
FACADE: FRASER

FROM*
\$365,931

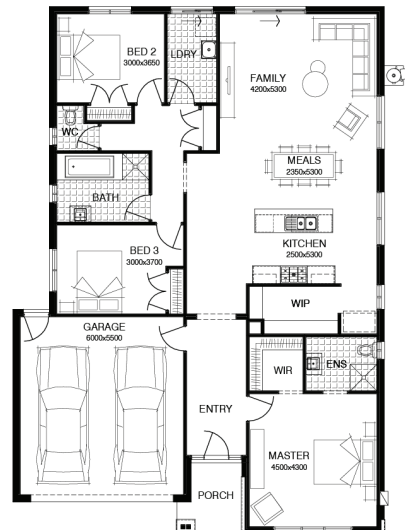
FIRST HOME OWNERS PRICE \$345,931

3 🚗 2 🍷 2 🚗 1 🚗 21sq 📏

BIRTHDAY BONUS*
\$19k of options for \$0

PACKAGE INCLUSIONS:

- ▼ \$19,000 OF FREE UPGRADES
- ▼ DEVELOPER AND COUNCIL REQUIREMENTS
- ▼ UP TO 100M2 (SINGLE STOREY) CAT 1 OR 180M2 (DOUBLE STOREY) CAT 2 CARPET
- ▼ UP TO 50M2 TIMBER FLOORING LAMINATE
- ▼ UP TO 40M2 OF 100MM COLOURED THROUGH CONCRETE
- ▼ REMOTE CONTROL TO GARAGE DOOR
- ▼ SECTIONAL LIFT GARAGE DOOR
- ▼ 20MM CAESARSTONE BENCH TOP TO KITCHEN



For enquiries please contact:
Christina Nicholas
0428 370 328
Simonds.com.au

Echuca
ECHUCA VIC 3564
christina.nicholas@simonds.com.au



*From pricing is based on standard plan, builders preferred siting, site costs allowance, and is subject to extreme site changes beyond our reasonable control and unknown at the time of print. All packages are subject to Developer and Council approval. Package Price does not include stamp duty, government, legal or bank charges. Community Infrastructure Levy and Asset Protection Permit are not included in pricing and is to be arranged by the client directly with the Developer (if applicable). Any alterations may incur additional charges. Confirm land price and availability prior to purchase. Simonds reserves the right to withdraw or amend pricing, inclusions and promotion at any time without notice. *Please refer to the terms and conditions at www.simonds.com.au/terms-and-conditions. This package applies to VIC Range range only. Please speak with your sales consultant for further details. Pricing is current at 07/11/2019.