



HOME AND LAND

Images shown are for illustrative purposes only and may not represent the final product such as lighting, window furnishings, timber look garage door & timber windows. Façade details including entry door and window sizing may vary between house types. Pricing also excludes features such as fencing, landscaping, letterbox, decking, driveway and any notable features of the façade. Please speak with your sales consultant for further details.

LOT 100, WINDSOR PARK ESTATE, SHEPPARTON (858M2)

FLOOR PLAN: MELVILLE 28_264
FACADE: BALLARINE

FIXED PRICE

\$368,052

FIRST HOME OWNERS PRICE \$348,052

4 🚗 2 🍷 2 🚗 2 🚗 28sq 📏

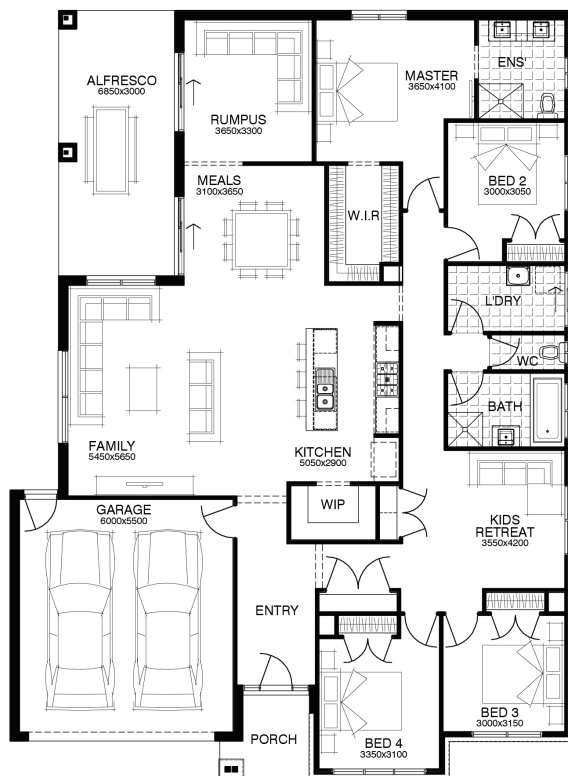
Select \$20k of upgrades

Good One, Gary!



PACKAGE INCLUSIONS:

- ▼ WELLNESS - DARWIN ESSENTIALS PACK
- ▼ DEVELOPER & COUNCIL REQS
- ▼ PART A & B TERMITE PROTECTION
- ▼ 3 COAT PAINT APPLICATION
- ▼ 450MM EAVES TO FACADE
- ▼ SECTIONAL LIFT GARAGE DOOR
- ▼ 900MM STAINLESS STEEL APPLIANCES
- ▼ TILED SHOWER BASES



For enquiries please contact:

Fay Toulson
0425 756 167
Simonds.com.au

Shepparton

SHEPPARTON VIC 3630
fay.toulson@simonds.com.au