



**FIXED**  
PRICE  
PACKAGE



# HOME AND LAND

Images shown are for illustrative purposes only and may not represent the final product such as lighting, window furnishings, timber look garage door & timber windows. Façade details including entry door and window sizing may vary between house types. Pricing also excludes features such as fencing, landscaping, letterbox, decking, driveway and any notable features of the façade. Please speak with your sales consultant for further details.

LOT 336, ATTWELL ESTATE, PLUMPTON (350M2)

FLOOR PLAN: BARRINGTON 18\_173  
FACADE: MACKAY

**FIXED PRICE**

**\$546,998**

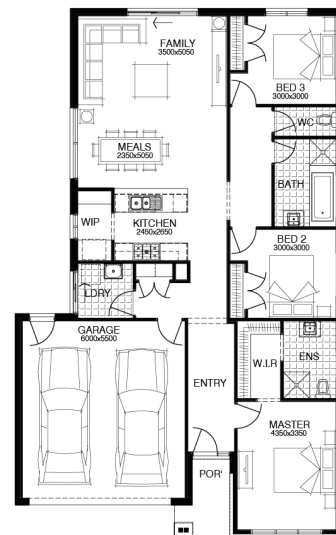
FIRST HOME OWNERS PRICE \$536,998

3 🚗 2 🍷 2 🚗 1 🏠 18sq 📏



## PACKAGE INCLUSIONS:

- ▼ \$20,000 OF FREE UPGRADES
- ▼ DEVELOPER AND COUNCIL REQUIREMENTS
- ▼ UP TO 100M2 (SINGLE STOREY) CAT 1 OR 180M2 (DOUBLE STOREY) CAT 2 CARPET
- ▼ UP TO 50M2 TIMBER FLOORING LAMINATE
- ▼ UP TO 40M2 OF 100MM COLOURED THROUGH CONCRETE
- ▼ SECTIONAL LIFT GARAGE DOOR
- ▼ SLIDING ALUMINIUM WINDOWS INCLUDING KEYED WINDOW LOCKS
- ▼ TECHNIKA 900MM STAINLESS STEEL



**For enquiries please contact:**

Stephen Gochman  
0408 802 121  
Simonds.com.au

Metro West

VIC  
stephen.gochman@simonds.com.au

