



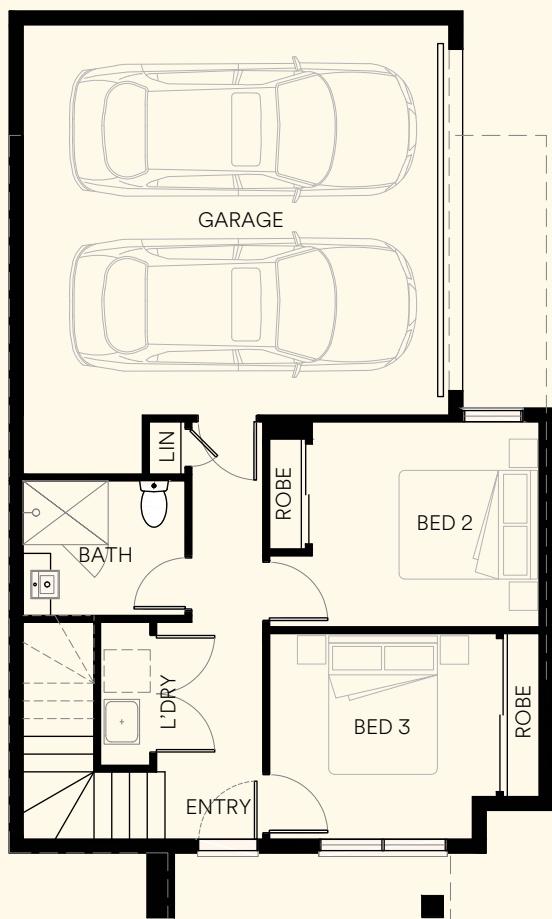
Luna Three .2

Lot 403

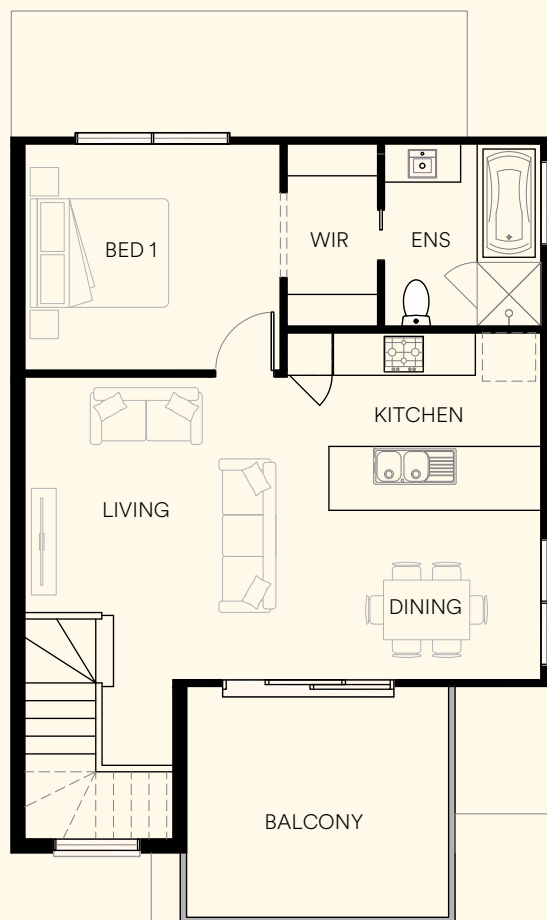
The Luna Collection offers designer two-storey townhouses with a contemporary architectural style. Each residence has been cleverly designed ensuring your new home feels modern, inviting and without compromise.

 3  2  2

Ground Floor	46.6m ²
First Floor	64.4m ²
Sub Total	11.9sq/110.9m ²
Garage	36.6m ²
Balcony	12.0m ²
Porch	4.1m ²
Total	17.6sq/163.6m ²



GROUND FLOOR



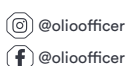
FIRST FLOOR



DISPLAY SUITE
1 Niki Place, Officer VIC 3809

DEVELOPMENT SITE
Corner of Bridge Road and
Coxon Street, Officer VIC 3809

P: 03 8317 3750
olioofficer.com.au



A project by



The pictures in this brochure are indicative, for illustrative purposes only, and are subject to change. The images in this brochure may be enhanced and may include some artistic licence. They are provided only to generally convey the planned look and feel of the home. Any dimensions/sizes indicated are nominal only with construction to be within allowable tolerances. While best endeavours have been used to provide that information is accurate, prospective purchasers should not rely on the information contained herein. Existing trees, landscaping and furniture layouts are illustrative only and furniture is not included. To the extent permitted by law (including the Australian Consumer Law), all information in this brochure is provided "as is" without representation or warranty of any kind as to the accuracy, completeness or suitability for a particular purpose and Development Victoria has no liability to any person under contract, tort, common law or equity or otherwise for any loss, expense, action, liability or damage which may arise from the information contained in this brochure. COPYRIGHT: No part of this work, including the designs and images contained in this brochure, may be reproduced or copied in any form or by any means (graphic, electronic, or mechanical, including photocopying, recording, taping or information retrieval systems) without the written permission of Development Victoria.