

alfie
ALTONA
NORTH

MYALFIE.COM.AU · 03 8317 3516 · 430 BLACKSHAW ROAD, ALTONA NORTH

max
architects

mdg

DEVELOPMENT
VICTORIA

VICTORIA
State
Government

The pictures in this brochure are indicative, for illustrative purposes only, and are subject to change. The images in this brochure may be enhanced and may include some artistic licence. They are provided only to generally convey the planned look and feel of the town home. Any dimensions/sizes indicated are nominal only with construction to be within allowable tolerances. While best endeavours have been used to provide that information is accurate, prospective purchasers should not rely on the information contained herein. Existing trees, landscaping and furniture layouts are representational only and furniture is not included. To the extent permitted by law (including the Australian Consumer Law), all information in this brochure is provided "as is" without representation or warranty of any kind as to the accuracy, completeness or suitability for a particular purpose and Development Victoria has no liability to any person under contract, tort, common law or equity or otherwise for any loss, expense, action, liability or damage which may arise from the information contained in this brochure. COPYRIGHT: No part of this work, including the designs and images contained in this brochure, may be reproduced or copied in any form or by any means (graphic, electronic, or mechanical, including photocopying, recording, taping or information retrieval systems) without the written permission of Development Victoria.

INTRODUCING

Ellyn





ARTIST IMPRESSION

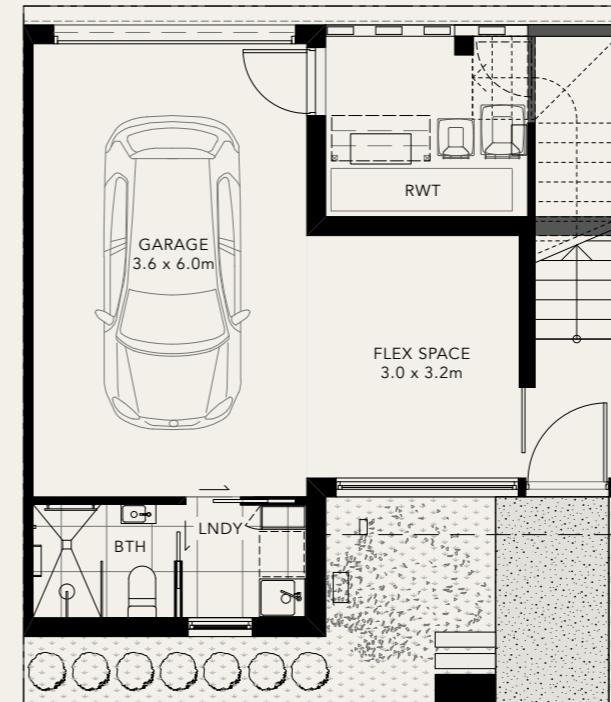
-  2 Bed
-  2 Bath
-  1 Car

GROUND FLOOR	24m ²
FIRST FLOOR	50m ²
SECOND FLOOR	54m ²
GARAGE	27m ²
TERRACE	10m ²
TOTAL	165m²
OUTDOOR	23m ²

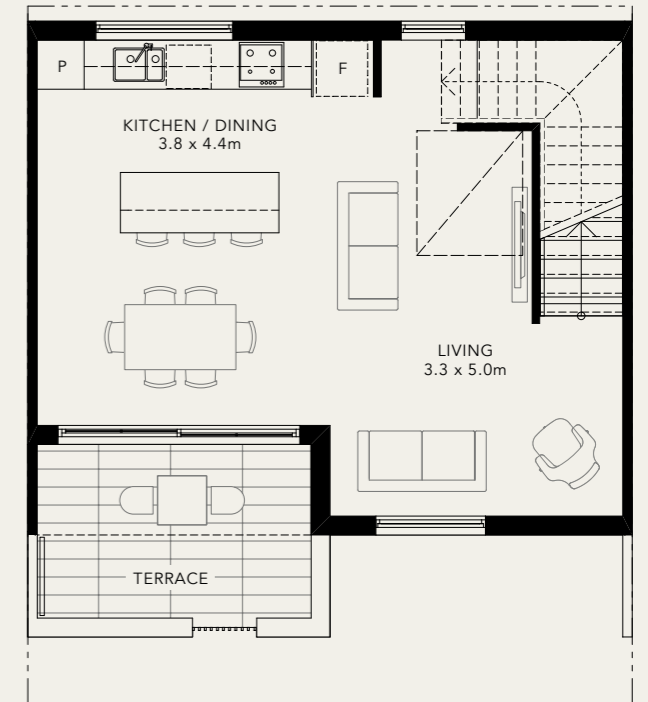
A boutique three level design offering lots of versatility. Car parking access is from a private internal laneway at the rear. A handy flex space and bathroom adjoining the single garage provides an alternative ground floor living environment looking out to a landscaped courtyard.

The open living zone and terrace overlooks Alfie's leafy central park and the second floor includes two bedrooms and a bathroom.

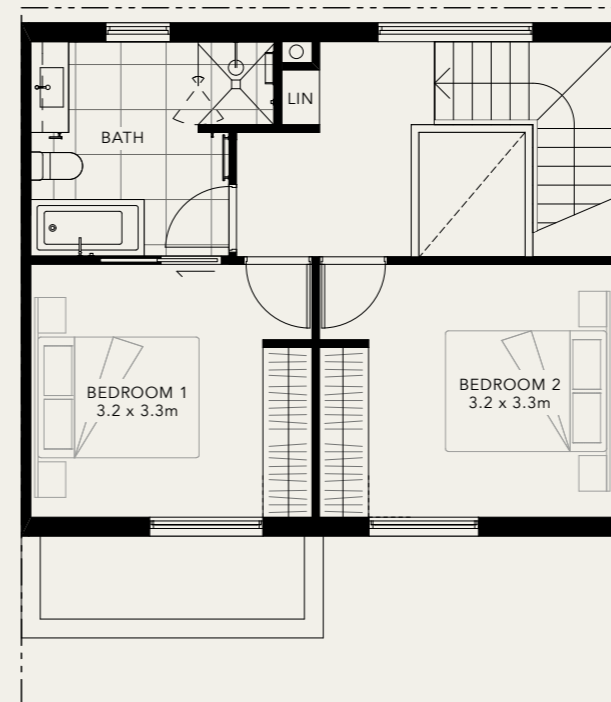
Stylish façades are characterised by a robust brick base at ground level and an elegant panelled treatment for the upper levels.



Ground floor



First floor



Second floor

