

# SDongleA-01 Quick Guide (WLAN)

Document Issue: 06  
Part Number: 31500AGU  
Release Date: 2019-06-13



Copyright © Huawei Technologies Co., Ltd. 2019. All rights reserved.

## NOTICE

The information in this document is subject to change without notice. Every effort has been made in the preparation of this document to ensure accuracy of the contents, but all statements, information, and recommendations in this document do not constitute a warranty of any kind, express or implied.

- SDongleA-01 Smart Dongle (the "Dongle" for short) is a smart communications expansion module that works with Huawei inverters to implement wireless communication between inverters and management systems through WLAN.
- For details about Huawei inverters working with the Dongle, see the corresponding inverter manuals. This document describes how to use the Dongle in a typical application scenario.

## Application Scenarios of Distributed Smart Inverters

### 1 Communication Scenario

#### NOTE

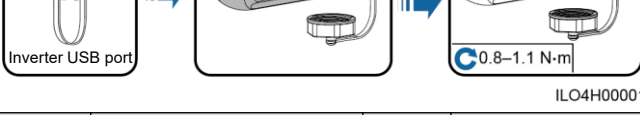
- Inverters with different appearances are used in the same communication scenario. The inverters in this document are used as an example.
- In the communications scenario, ensure that the wireless network of the inverter and router is not disturbed and that the signal is normal.



IL04P00003

### 2 Installation and Commissioning

1. Install the Dongle.



ILO4H00001

Operation	LED		Remarks	Description
	Color	Status		
Installing the Dongle	N/A	Off	Normal	The Dongle is not secured or is not powered on.
	Yellow (blinking green and red simultaneously)	Steady on		The Dongle is secured and powered on.
	Red	Blinking at short intervals (on for 0.2s and then off for 0.2s)		The parameters for connecting to the router are to be set.
	Red	Steady on	Abnormal	The Dongle is faulty. Replace the Dongle.
	Blinking red and green alternatively	Blinking at long intervals (on for 1s and then off for 1s)		No communication with the inverter <ul style="list-style-type: none"><li>Remove and insert the Dongle.</li><li>Check whether inverters match the Dongle.</li><li>Connect the Dongle to other inverters. Check whether the Dongle or the USB port of the inverter is faulty.</li></ul>

## NOTICE

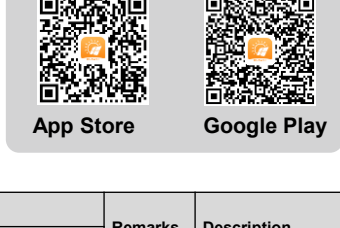
Before setting parameters, ensure that the AC or DC side of the inverter has been powered on.

2. Install the FusionSolar app (2.2.0 or later) and perform **Quick settings** and **Setup Wizard**. For details, see the corresponding inverter quick guide. If the operation has been performed, ignore it.

- Method 1: Search for **FusionSolar** in Google Play or App Store and install the app.
- Method 2: Scan the QR code to download and install the app.



FusionSolar

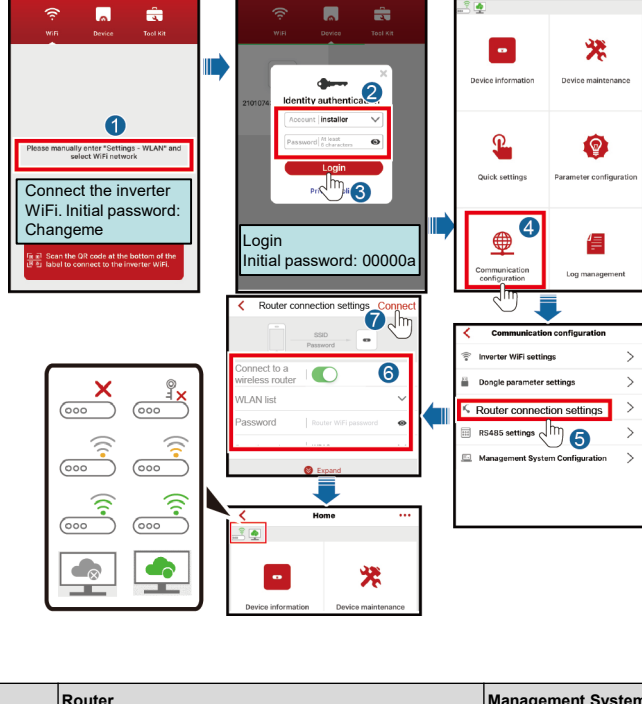


Operation	LED Indicator		Remarks	Description
	Color	Status		
Router connection settings	Green	Blinking at long intervals (on for 0.5s and then off for 0.5s)	Normal	Connecting to the router
	Red	Blinking at short intervals (on for 0.2s and then off for 0.2s)	Abnormal	Failed to connect to the router. Check whether the parameters for connecting the Dongle to the router are properly set. If not, set the parameters correctly.
Management system settings	Green	Steady on	Normal	Successfully connected to the management system.
	Red	Blinking at long intervals (on for 1s and then off for 1s)	Abnormal	Failed to connect to the management system. Check whether the parameters for connecting inverters to the management system are properly set. If not, set the parameters correctly.
	Green	Blinking at short intervals (on for 0.2s and then off for 0.2s)	Normal	The inverter is communicating with the management system through the Dongle.

If you need to modify **Router connection settings**, run **FusionSolar**, tap **Device commissioning** to reset the parameters using **Local Commissioning Tool**.

#### NOTE

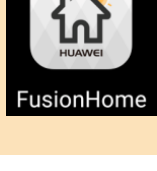
- The following describes how to set the FusionSolar app (2.3.0) on the iOS UI. The setting method is the same as that used on the Android OS UI, but the UI display is slightly different. The site UI shall prevail.
- Use the initial password upon first power-on and change it immediately after login. To ensure account security, change the password periodically and keep the new password in mind. Not changing the initial password may cause password disclosure. A password left unchanged for a long period of time may be stolen or cracked. If a password is lost, devices cannot be accessed. In these cases, the user is liable for any loss caused to the PV plant.



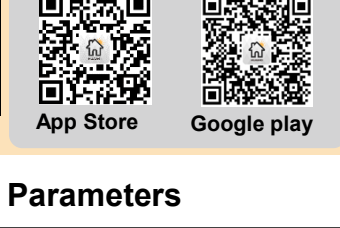
Icon	Router			Management System	
Description	Disconnected	Incorrect password	Connected. Signal strength	Failed to create the data connection.	The connection is successful.

#### NOTE

- You can also set parameters on the **Router connection settings** pages using the FusionHome app. The setting method is the same as that used on the FusionSolar app.
- To obtain the FusionHome App, scan the QR code or search for **FusionHome** in App Store or Google play to download and install the app. The app version is 2.1.11.316 or later.



FusionHome



App Store

Google play

## Performance Parameters

Model on the Nameplate	SDongleA-01
Installation Mode	Plug-and-play (applicable to inverters only)
Indicator	LED
Dimensions (W x H x D)	130 mm x 48 mm x 33 mm
Net Weight	90 g
Ingress Protection Rating	IP65
Typical Power Consumption	2 W
Standard and Frequency Band	IEEE 802.11b, IEEE 802.11g, IEEE 802.11n 2.412 GHz to 2.484 GHz
Certification	SRRC, CE, RCM
Operating Temperature	-30°C to +65°C
Relative Humidity	5% RH to 95% RH
Storage Temperature	-40°C to +70°C
Highest Altitude	4000 m