

QUICK INSTALLATION GUIDE

1. Roof Preparation



Make sure roof is free of dirt and debris.

Before the modules are laid, clean the roof with isopropyl alcohol and wait to dry.

2. Setout Array



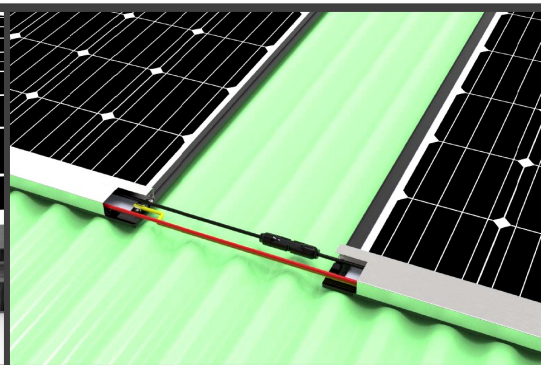
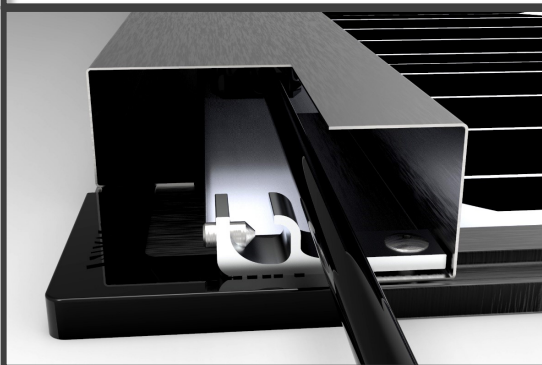
Set out array allowing for efficient application of silicone and ensuring the array is square.

3. Laying Panels



Silicone is applied using a Cordless Caulking Gun. 5-8 mm bead is applied at equal distance (as per installation manual). 2 installers are used to ensure module is installed square. NOTE Avoid screw lines when placing panels.

4. Earthing / Cable Management



Use integrated earthing lug to run earthing cables.

Use preinstalled cable duct to run DC string cables.