



MEASUREMENTS - GUIDE ONLY

PLEASE NOTE: All size results are in cm's unless stated otherwise. The size guide is to assist you in getting the right fit, the first time. Please follow our **HOW TO MEASURE** guide below. For accuracy, it's best to measure your body, we do not suggest measuring your clothes.

HOW TO MEASURE - Women

Bust

Measure around the fullest part of your bust

Waist

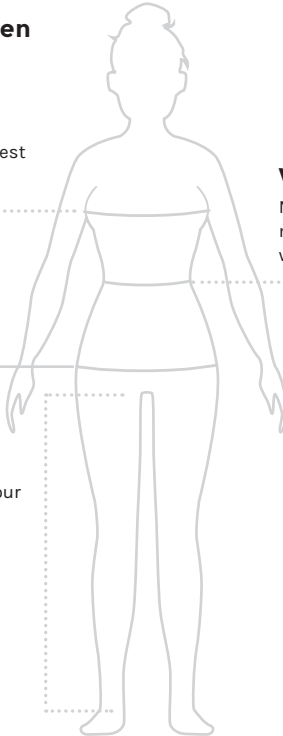
Measure around the narrowest part of your waistline

Hip

Measure around the fullest part of your hips

Inner Leg

Measure the inside of your leg from your crotch to your anklebone



WOMEN'S BODY MEASUREMENTS IN CENTIMETRES

SIZE TO FIT	8 / XS	10 / S	12 / M	14 / L	16 / XL	18 / 2XL	20 / 3XL	22 / 4XL
BUST	83 - 87	88 - 92	93 - 97	98 - 102	103 - 107	108 - 112	113 - 117	118 - 122
WAIST	66 - 70	71 - 75	76 - 80	81 - 85	86 - 90	91 - 95	96 - 100	101 - 105
HIP	90 - 94	95 - 99	100 - 104	105 - 109	110 - 114	115 - 119	120 - 124	125 - 129



MEASUREMENTS - GUIDE ONLY

PLEASE NOTE: All size results are in cm's unless stated otherwise. The size guide is to assist you in getting the right fit, the first time. Please follow our **HOW TO MEASURE** guide below. For accuracy, it's best to measure your body, we do not suggest measuring your clothes.

HOW TO MEASURE - Men

CHEST

Measure around the widest part of your chest

WAIST

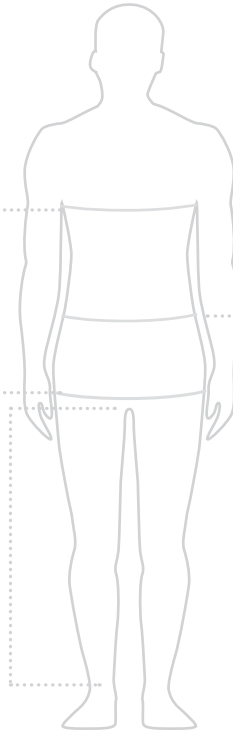
Measure around the narrowest part of your waistline

HIP

Measure around the fullest part of your hips

CROTCH

Measure the inside of your leg from your crotch to your anklebone



MEN'S BODY MEASUREMENTS IN CENTIMETRES

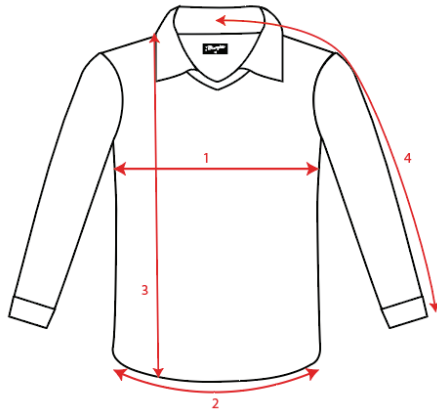
SIZE TO FIT	28	30/S	32/M	34/L	36/XL	38/2XL	40/3XL	42/4XL
CHEST		96-99	100-104	105-109	110-114	115-119	120-124	125-129
WAIST	70-74	75-79	80-84	85-89	90-94	95-99	100-104	105-109



MEASUREMENTS - GUIDE ONLY

PLEASE NOTE: All size results are in cm's unless stated otherwise. The size guide is to assist you in getting the right fit, the first time. Please follow our **HOW TO MEASURE** guide below. For accuracy, it's best to measure your child's body, we do not suggest measuring their clothes.

HOW TO MEASURE - Kids



KIDS - BOYS BODY MEASUREMENTS IN CENTIMETRES

THIS IS A GUIDE ONLY - TO HELP YOU CHOOSE THE RIGHT SIZE

SIZE	2	4	6	8	10	12	14	16
1. CHEST	66	70	74	79	85	91	97	103
2. HEM circumference	66	70	74	79	85	91	97	103
3. BODY LENGTH	40	45	50	56	59	63	66	70
4. SLEEVE LENGTH	43	50	57	62	67	72	77	82

KIDS - GIRLS BODY MEASUREMENTS IN CENTIMETRES

THIS IS A GUIDE ONLY - TO HELP YOU CHOOSE THE RIGHT SIZE

SIZE	2	4	6	8	10	12	14	16
1. CHEST	59	63	67	73	79	85	91	97
2. HEM circumference	61	65	69	75	81	87	93	99
3. BODY LENGTH	37	42	47	53	55	58	60	63
4. SLEEVE LENGTH	41	48	55	60	65	70	75	80