



Gawler Community House



**Gawler
Community
House**

Putting the heart back into our community

2 Scheibener Terrace, Gawler 5118

Phone: 8522 4601

E-Mail:

admin@gawlercommunityhouse.org.au

Website

www.gawlercommunityhouse.org.au

NEWSLETTER

April / May 2019

Sharyn Lewis, Manager



I would like to take this opportunity to let you all know that we will be saying our very sad goodbyes to our beautiful Volunteer Coordinator, Colleen. Colleen will be sadly missed around the place and I know I will miss banging on her door, often annoying her.

I would like to wish her all the very best in her future endeavours with retired life and enjoying the beautiful river life that I know I miss terribly. From the entire team here at GCH, thank you Colleen for all that you have done and the best of luck for your future enjoying the river life.

I would like to now introduce you to our new Volunteer coordinator, Christine Boyle. Christine brings with her experience with working within the Community Services industry and we are excited to have her as part of our team.

If you see her around, be sure to say hello and make her feel welcome. It's a bitter sweet time to be losing our long-standing Volunteer Coordinator and then to be welcoming our new one.



We are also pleased to share the news that Jan McMaster is our new Administration Officer here at GCH. Jan has been an admin volunteer for 5 years now and is now our newest staff member. Jan is very knowledgeable and is able to assist with all enquiries. You will see her friendly face from Tuesday through to Friday.

Here's to lots of new beginnings all round.



Colleen Moyne, Coordinator

I'm sad to say that this will be my last newsletter with the Gawler Community House.



I will be moving on to other ventures in Mannum and Murray Bridge and spending more time pursuing my writing (now that I'm a famous author!) 😊

I have been involved with the Gawler Community House for the last eight years (retiring once before, only to come back six months later for another few years,) and in that time I have seen this place grow and prosper beyond all expectations and have been proud to have been a part of that process.

It has been an honour to work with the Board of Management and of course with my manager Sharyn who has been a respected colleague and supportive friend.

During my time here I've seen many volunteers come and go and have loved the blend of characters that make up the team. It has been both a challenge and a delight resulting in some lovely friendships and shared experiences. This place would not be what it is without our volunteers' persistence and dedication to the vision and mission of the House.

Mostly though, I want to thank all those treasured familiar faces we see here on a regular basis. You are the reason that the Community House exists and the reason we get up in the mornings. I have been blessed to have one of the best jobs ever.

I am excited to see what the next chapter will bring for the Gawler Community House and for the fortunate person who takes over my role. They're in for a great adventure!

New Volunteers

We are pleased to welcome some new volunteers to the team:



Del Grundy – Admin.



Claire Rex – Op Shed.



Lesley Annand – Shop.



Tim Gregory – Maintenance.

“One of the marvellous things about community is that it enables us to welcome and help people in a way we couldn't as individuals.” – Jean Vanier

HARMONY DAY / WORLD POETRY DAY WINNERS



We are pleased to announce the winners of our Harmony Day / World Poetry Day poetry competition. Participants were asked to write on the theme of 'belonging.'

First prize of a \$25 gift voucher from Gawler Books goes to volunteer Wendy Mansfield (left) for her entry 'Belonging' (see below.)

Second prize of a voucher to spend in our Op Shop goes to Alex Robertson of Adelaide Plains Poets for 'A Global Village,' and two highly commended certificates go to Wendy Mansfield for 'Fog' and Yvonne Evans of Mannum Writers Collective for 'By My Side.'

Congratulations to our worthy winners who were invited to share their poems - and receive their awards from our guest judge, Carolyn Cordon - at our recent community lunch.

'Belonging'

*Busy bees flitting from flower to flower,
flying back and forth to the hive
with their golden drops of nectar –
It's where they belong.*

*Clucking chickens scratching in the dirt;
Straw-lined coops to lay their gifts of goodness –
It's where they belong.*

*Barking dogs guarding the property,
prancing back and forth
smug with their bravery –
It's where they belong.*

*Friends and family at our sides
laughing and playing,
surrounding us with love and caring –
It's where they belong.*

*The seasons bring warmth, water, wind and more,
spreading colour and beauty in their wake
leaving us grateful
for where we belong.*

JUST FOR FUN

With Easter just around the corner, here is a bit of bunny humour...



COMING EVENTS

Over 70 stall holders providing information on services within the ageing and disability sector

AGEING & DISABILITY EXPO

Door Prizes
Free Admission
Free Morning Tea

Plus guest speakers...

Costa Georgiadis from ABC's Gardening Australia
Rebecca Sullivan TV presenter and author

Friday 5 April 2019
10am – 1pm

Gawler Sport & Community Centre
Nixon Terrace, Gawler

Enquiries: 8522 1177
Email: chsp@gawler.sa.gov.au

Seniors Collaborative Action Project
Gawler

We will be manning a stall at the **Ageing & Disability Expo** at the Sport & Community Centre on April 5th. Come along and say hello.



Easter is fast approaching, and our centre will be closed from Friday, April 19th (Good Friday) until Monday, April 22nd, re-opening on Tuesday 23rd. We are currently running an Easter Raffle to win this beautiful picnic set. Tickets are \$1 each or 3 for \$2. The winner will be drawn on April 16th so there is still time to pick up tickets next time you visit our shop.

Don't forget **Mother's Day** on May 12th. We have some lovely items in our Op Shop – or perhaps you might like to give Mum a gift voucher to come and do some shopping of her own. Just come and ask our admin staff. We will also be running a Mother's Day raffle for some lovely gift packs, so keep an eye out for tickets for that following our Easter draw.

Australia's BIGGEST MORNING TEA

Every cup counts in the fight against cancer

Australia's Biggest Morning Tea – We will be hosting a morning tea here at the Gawler Community House on Wednesday, May 22nd to raise funds for the Cancer Council.

GAWLER CIVIC CENTRE

Official Launch Festival

APRIL 7-13

CELEBRATE THE OPENING OF THE GAWLER CIVIC CENTRE WITH A WEEK OF SPECIAL EVENTS

SUNDAY 7TH Karl Cook's HORRIBLE HISTORIES OF ADELAIDE FREE EVENT	MONDAY 8TH Into the Light An invitation to the formal opening of the exhibition 'Into the Light' 7:00PM-9:00PM FREE EVENT	TUESDAY 9TH GAWLER BUSINESS INNOVATION PITCH TUESDAY 9 APRIL - 7:00PM DO YOU HAVE AN INNOVATIVE BUSINESS IDEA OR DIGITAL BUSINESS PROPOSAL? FREE EVENT
WEDNESDAY 10TH SA [YOUTH WEEK] SCHOOL BREAK UP PARTY 4:00PM-7:00PM FREE EVENT	WEDNESDAY 10TH The Amazing Magic Mike in Australia's Funniest Street Show 7:00PM-9:00PM TICKETS \$10-\$25	THURSDAY 11TH GALA EVENING DANIEL KOEK one of Australia's Best Jests ...punchline master! 7:00PM-9:00PM TICKETS \$45
FRIDAY 12TH For further information and booking details, including Guided Tours: gawler.sa.gov.au/community/gawler-civic-centre	SATURDAY 13TH Gawler	SATURDAY 13TH



Gawler & Districts Elsie Ey TOY LIBRARY

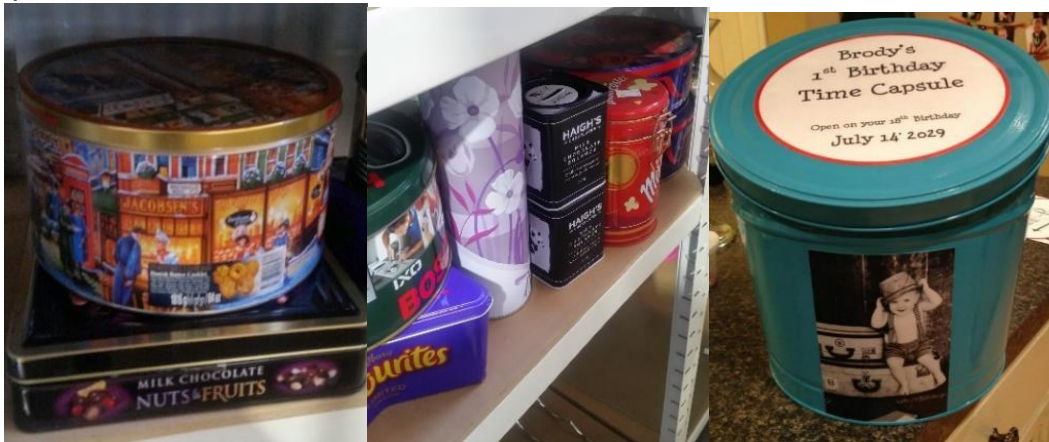
Open Tuesdays & Fridays 9:00am – 4:00pm

22b Cowan Street, Gawler

www.facebook.com/elsieeytoylibrary
elsieeytoylibrary@gmail.com

REPURPOSING OLD TINS

You can always be guaranteed to find old tea, biscuit, or confectionary tins in any Op Shop. Here is a selection of what we have available right now and some great ideas on how you can repurpose them.



GARDEN NEWS

Our garden is slowly recovering from the hot weather and yielding some lovely new fruit and vegetables. Just for something a bit different this month, I thought I would feature our capsicums. There are lots of ways to incorporate them into meals, and here are just a few...



NEW ACCESS GATE

You may have seen our volunteers, Tony and Jim hard at work installing a gate at the front of the Community House beside the donations bin.

The safety of our visitors is important to us and despite the 5km per hour signage at our driveway, it can still be quite hazardous for those entering and leaving on foot.

This gate will provide much easier and safer

walking access from Scheibener Terrace for both visitors and volunteers. If you are on foot or parked out the front, you will no longer have to walk all the way around and through the large gates to access our Big Shed Op Shop.

When completed there will be a concrete path and signage. You are still welcome to enter via the reception area as well.



COMMUNITY LUNCH

Our Community Lunch is held on the last Friday of each month at 12noon. The cost is \$7 for non-members, and \$5 for members for a delicious two-course lunch.

Upcoming dates for 2019:

- April 26th
- May 31st
- June 28th
- July 26th
- August 30th
- September 27th
- October 25th
- November 29th.





RETURN OF THE SAUSAGE SIZZLE!

You will be pleased to hear that our weekly sausage sizzles have returned and will be held every Wednesday at 12noon. For just a gold coin donation you will receive a sausage in bread with your choice of onion and sauce.










RECYCLING

Did you know that there are drop-off points around the Northern area for many reusable/recyclable items?

- **Mitre 10**, Gawler – Light Globes
- **Coles and Woolworths** – Soft plastics.
- **Scout Recycling, Willaston** – Drink containers, car batteries, car bodies, scrap metals, deposit and non-deposit drink and food containers, mixed plastics, cardboard, whitegoods.
- **NAWMA, Edinburgh North** – E-Waste, TV's, polystyrene, tins of paint, oil, fluorescent lights, mattresses, tyres, gas bottles.
- **Bunnings** – E-waste
- **Aldi** – Household batteries.
- **Gawler Environment Centre** – Beauty products/makeup containers, mailing satchels & padded bags, oral care (toothbrushes, toothpaste tubes and caps, dental floss containers,) Nespresso coffee pods, Pens, pencils, markers, household batteries, printer cartridges, mobile phones.



CURRENT COURSES – 2019.

MONDAY	TUESDAY	WEDNESDAY	THURSDAY	FRIDAY
 <p>Monday Games Group 1:30pm - 3:30pm Cost: Free</p>	 <p>Conquering Computers 1:00pm – 3:00pm Cost: \$6.00 per lesson</p>	 <p>Language, Literacy and Numeracy Cost: \$6.00 per lesson This class is available by appointment only on Wednesday and Thursday.</p>	 <p>Craft Circle 10:00am – 12:00pm Cost: Free</p>	 <p>Friday Book Club 10:00am – 12:00pm Free</p>
	 <p>I.T. One on One Available by appointment Cost: \$10.00 per lesson</p>	 <p>English as a Second Language This class is available by appointment only on Wednesday and Thursday.</p>	 <p>Designing with Mosaics 10:00am-1:00pm Cost: \$15.00 per lesson</p>	<p>Community Lunch Last Friday of every month. 2 course meal Non-members \$7.00 Members \$5.00 Bookings are essential</p>
	 <p>Leatherwork Learn the basic skills of leatherwork Cost: \$6 per lesson</p>	 <p>Budget Cooking Learn the skills of cooking healthy meals on a budget. Cost: \$6 per lesson</p>	 <p>Creative Writing 10:00am – 11:30am Cost: \$6.00 per lesson</p>	 <p>Art for enjoyment 9am - 12pm Cost \$6 per lesson</p>
		 <p>Wednesday Jam Club 1-4pm Casual setting to come and play/sing/ or just attend.</p>		



OTHER GROUPS & SERVICES AVAILABLE AT GAWLER COMMUNITY HOUSE

- Referral Service – by appointment.
- Tutti Arts 1st and 4th Monday
- Relationships Australia - 2nd Monday/Tuesday
- Northern Carers - 3rd Monday - 8284 0388
- E-Tax – Free tax help - July to October annually
- Gawler Radio (Gawler Broadcasting) - 8522 6441 - Call for more information

Make A Difference



**Seeking expressions of interest for the
following positions:**

Gardening

If you have knowledge and/or experience in gardening, propagating, potting etc and would like to know more, please see one of our friendly admin staff for an expression of interest form.

