



Schmick Repair Gallery






## James Moffat joins winning team Schmick

On the race track, V8 Supercar driver, James Moffat relies on his highly skilled team to keep his car in optimum condition. Off the track, James turns to team Schmick to take care of those annoying knocks or dents that occur to his personal cars from time-to-time.

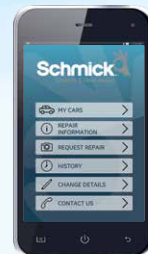
*"I found Schmick on the internet and requested a simple repair, I was so impressed with the quality and level of professionalism, I gladly accepted their invitation to join the team as an ambassador. It's a win, win, win for all!"* says James.



## Easy process for requesting repair

-  **Step 1.** Take a photo of the damage
-  **Step 2.** Send it to [repairs@schmickclub.com](mailto:repairs@schmickclub.com)
-  **Step 3.** A Schmick Technician will call you to make the arrangements

Or request a repair in seconds using our member exclusive app



Schmick paint technicians are highly experienced and qualified spray painters; utilising leading edge SMART technology we professionally repair most minor damage to look like new again.



The following section displays the repair guide overview and samples of actual damage repaired for members.

## Schmick Repair Gallery

For full program details please refer to the membership terms and conditions



# Repairs Guide Overview

*I'd just like to say thank you for a great job  
on the wheel you repaired yesterday.*

**Vittoria (Fairfield)**



## PRICE COMPARISON GUIDE

Service	Member Price	Panel shop (average)
Bumper Bar Scrapes	\$50	\$350 – \$1200
Deep Scratch	\$50	\$350 – \$1200
Body Kit Repair	\$50	\$250 – \$1200
Alloy Wheel Repair	\$50	\$200 – \$500



## Main Exclusions

- Chrome and High Polished Alloy Wheels
- Replacement parts
- Structural damage
- Non painted textured plastic components
- Damage on your vehicle prior to joining Schmick

We take the sting out of your new car ding



## Bumper bar scrapes and scratches

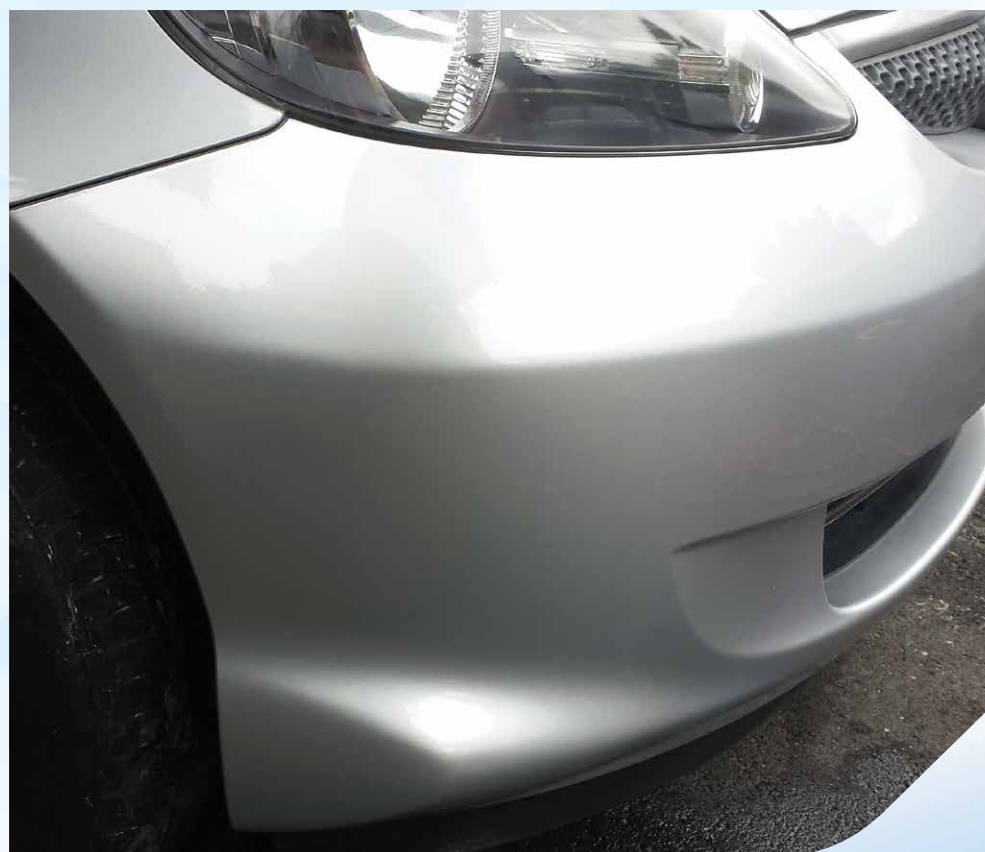


up to 500mm on all plastic bumper bars (excludes non painted textured plastic)

**BEFORE**



**AFTER**



Schmick Repair Gallery

For full program details please refer to the membership terms and conditions



## Deep panel scratch or dent with paint damage



up to 60mm in length or diameter on all vertical panels excludes roof, bonnet and top of boot lid (horizontal panels)

BEFORE



AFTER



We take the sting out of your new car ding





## Surface scratches and marks

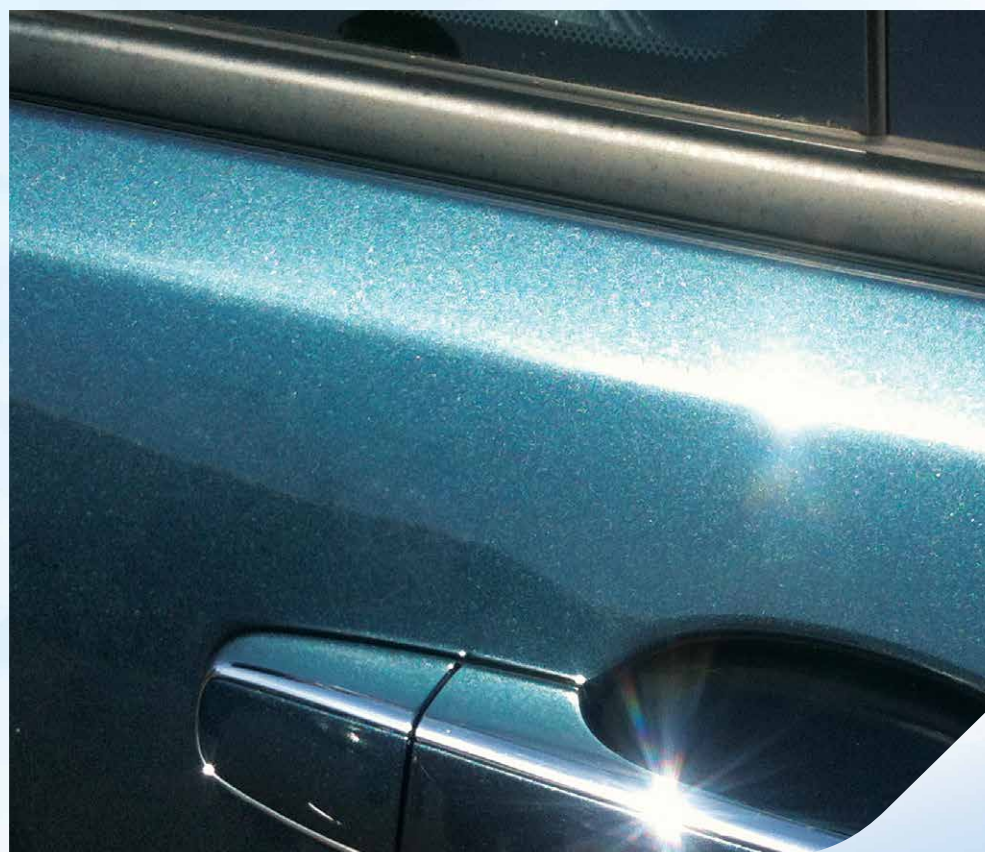


covering up to 4 painted panels

**BEFORE**



**AFTER**



Schmick Repair Gallery

For full program details please refer to the membership terms and conditions

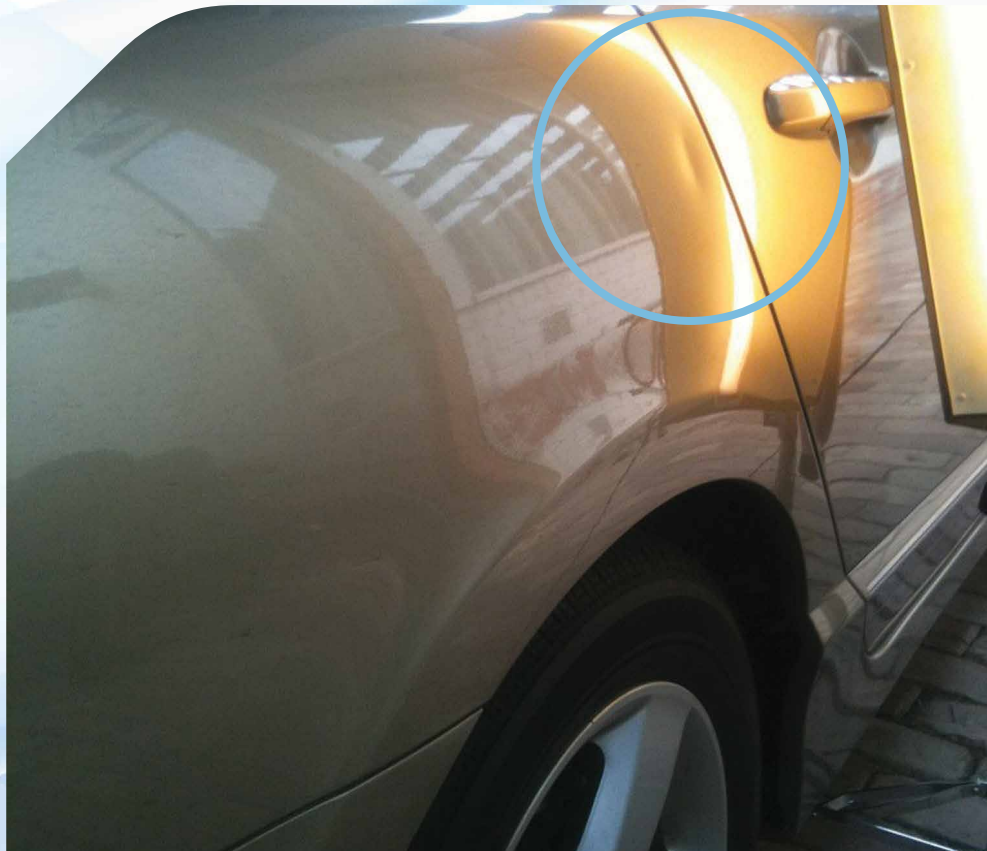


## Pressure dents

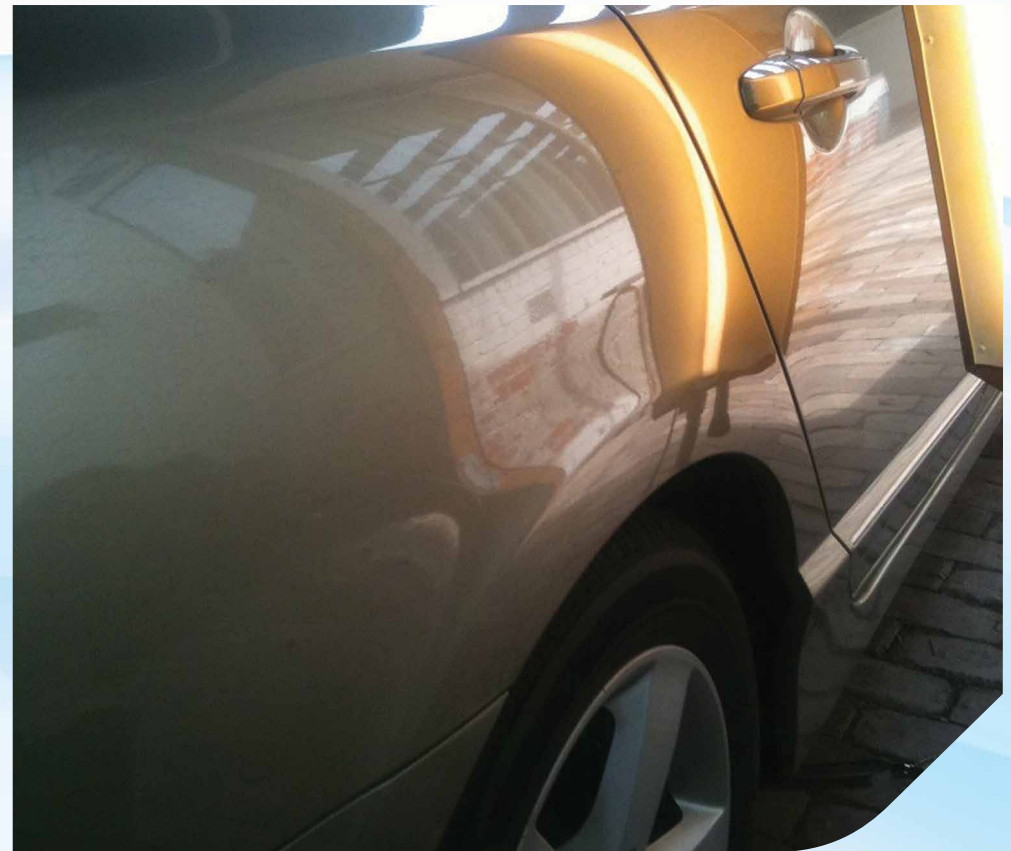


up to 60mm in diameter on all flat metal panels

BEFORE



AFTER



We take the sting out of your new car ding





## Side mirror scrapes & scratches



covering one plastic painted mirror casing – no size limit

**BEFORE**



**AFTER**







## Body kit scuffs & scrapes



up to 500mm on all painted plastic body kit components

BEFORE



AFTER



We take the sting out of your new car ding



## Alloy wheel scrapes (painted finish wheels)



scuffs & scrapes on one alloy wheel – no size limit (\*excludes chrome finished and high polished wheels)

**BEFORE**



**AFTER**



Schmick Repair Gallery

For full program details please refer to the membership terms and conditions





## Alloy wheel scrapes (machine finish wheels)



scuffs & scrapes on one alloy wheel – no size limit (\*may lose fine machine lines on outer wheel face)

BEFORE



AFTER



We take the sting out of your new car ding



## Interior leather & vinyl repairs



holes and tears up to 80mm in length

**BEFORE**



**AFTER**



Schmick Repair Gallery

For full program details please refer to the membership terms and conditions



“Professional work was undertaken and general demeanour of your technician was exemplary. Cannot recommend Schmick’s services highly enough.”

*Sid Bell (Wattle Glen, VIC)*



## Member discounted repairs for larger damage

The following section displays repairs that exceeded the size limits of the membership program but were still repaired by a Schmick technician at a member discounted price.

(Note: Larger damage that exceeds the minor cosmetic program size limits but is still repairable by your Schmick technician can be quoted and repaired at the discretion of Schmick).

We take the sting out of your new car ding

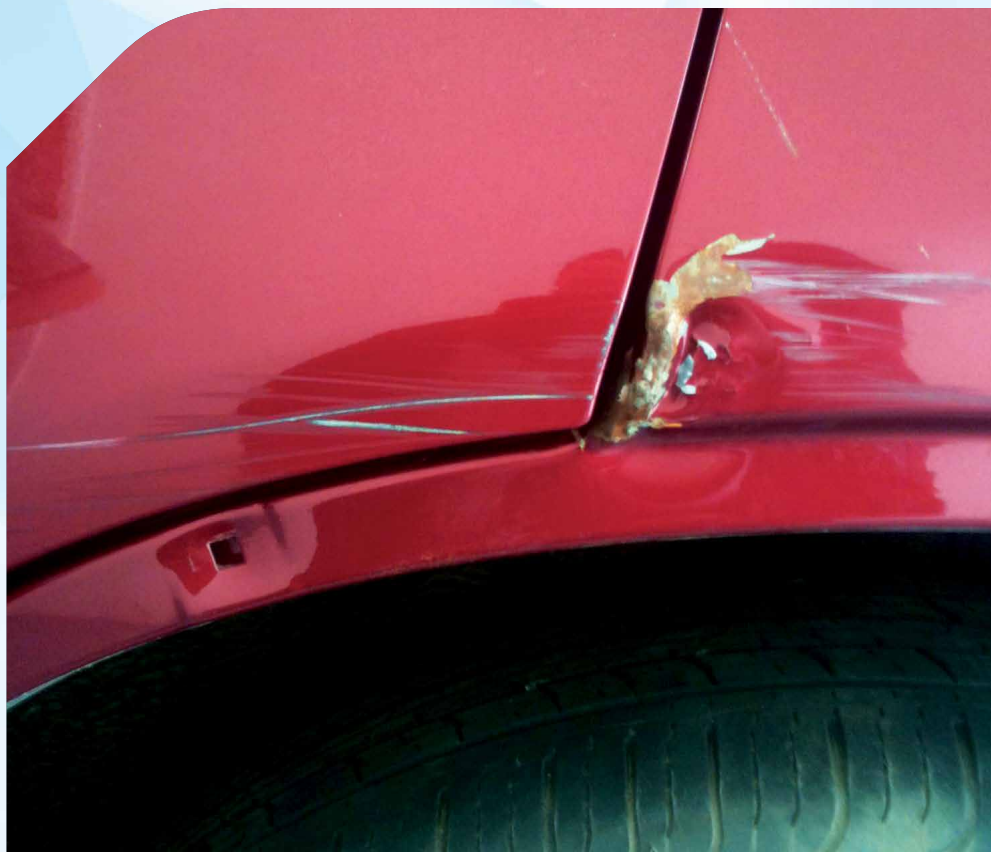


\$1,400 in a repair shop **\$350 with Schmick**

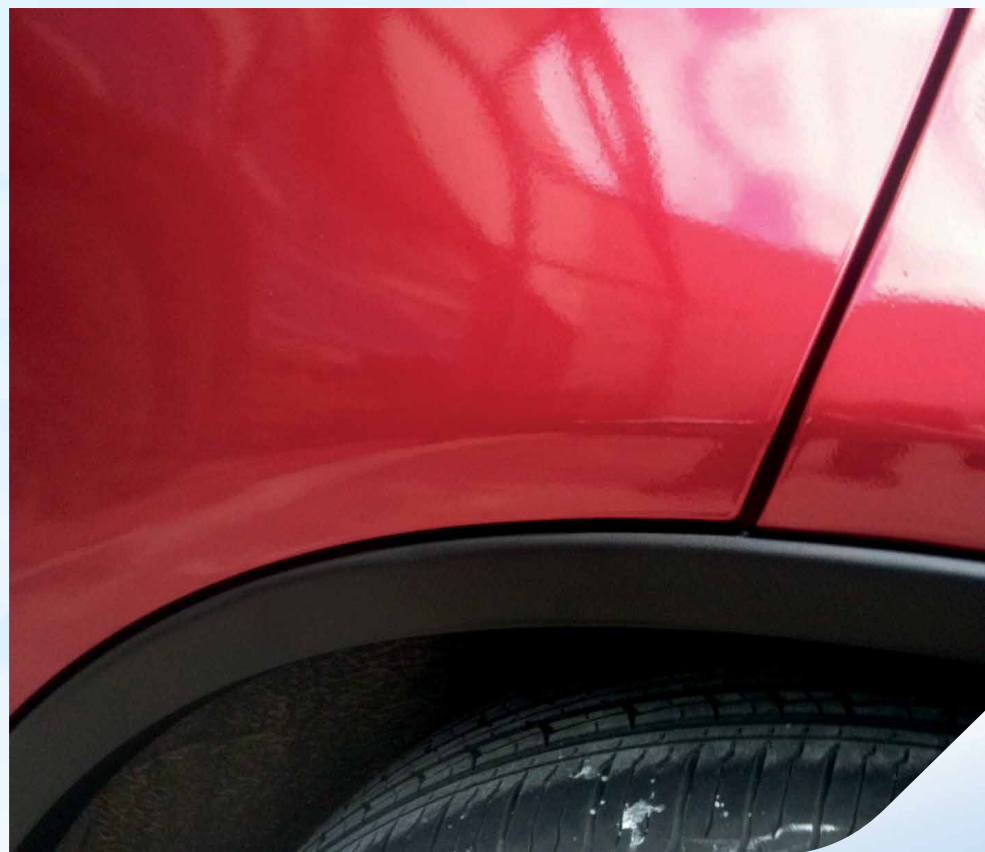


Repairs of larger damage that exceed the minor cosmetic program are at the discretion of Schmick

**BEFORE**



**AFTER**



Schmick Repair Gallery

For full program details please refer to the membership terms and conditions



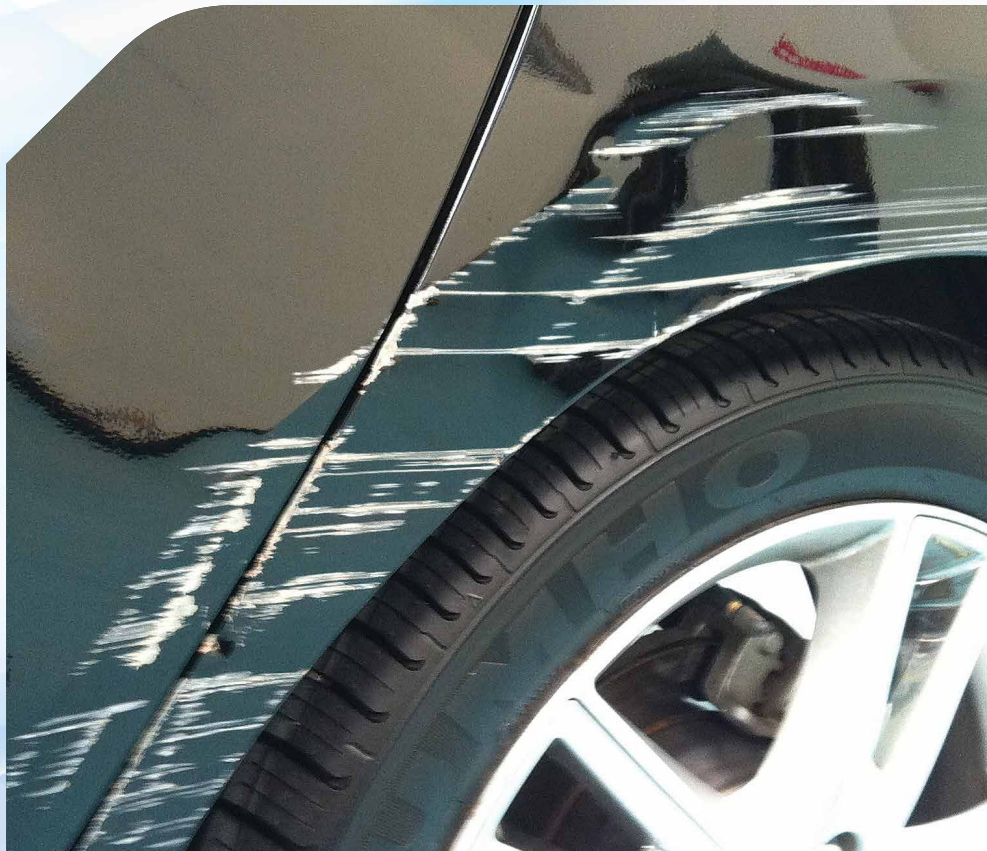


\$1,600 in a repair shop **\$450 with Schmick**



Repairs of larger damage that exceed the minor cosmetic program are at the discretion of Schmick

**BEFORE**



**AFTER**



We take the sting out of your new car ding

