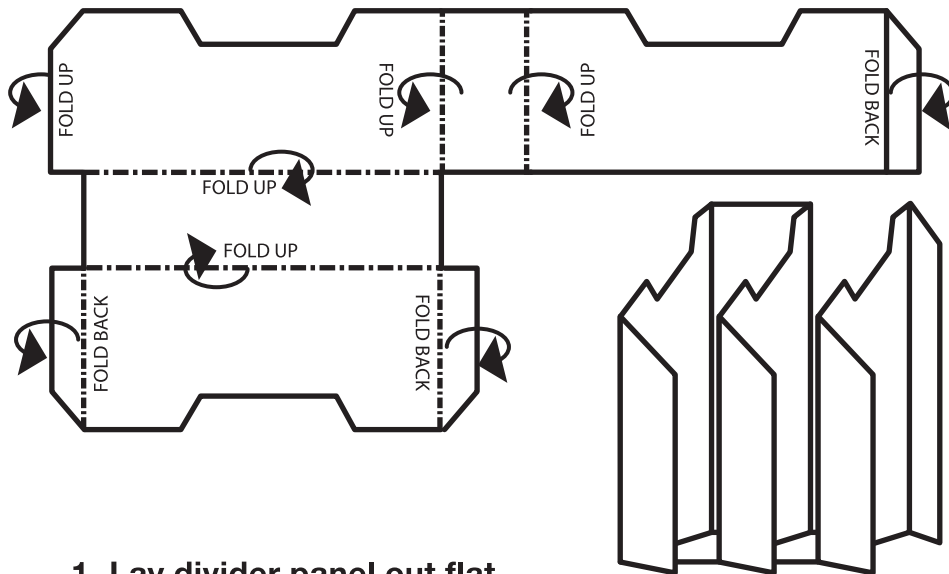


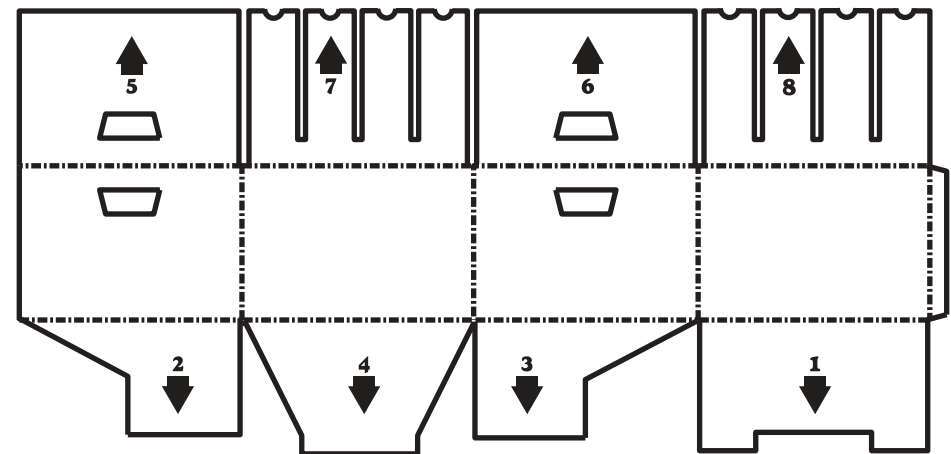
Assembly Instructions

STEP 1: ASSEMBLE DIVIDERS



1. Lay divider panel out flat.
2. Fold panels as indicated by arrows.
3. Place divider insert into the archive box (see step 4 in directions for base assembly).

STEP 2: ASSEMBLE BASE



1. Lay archive box out flat.
2. Fold panels 1, 2 then 3.
Fold panel 4 in last to lock in base.
3. Fold Fold panels 5 & 6 into the box.
4. Place assembled dividers inside archive box, then fold panels 7 & 8 – locking dividers in place.



File & Find Archive Box