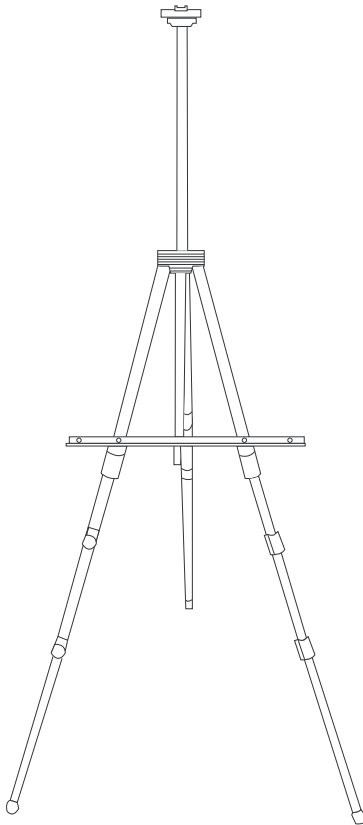


Born.

ASSEMBLY INSTRUCTIONS

TELESCOPE THREE LEG ALUMINUM EASEL

JBA131147



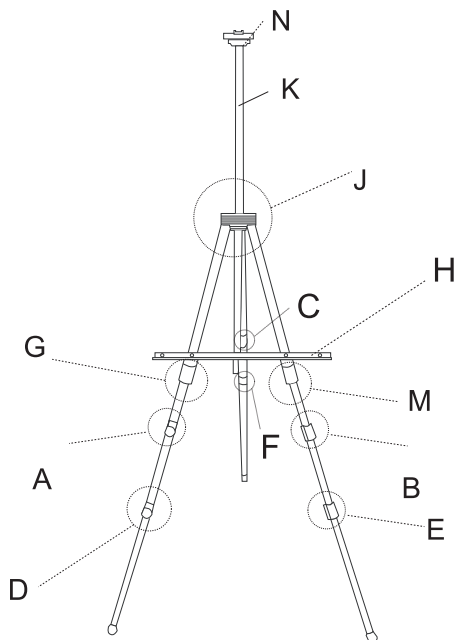
Assembled easel size: 125W x 110D x 157H cm

Fits maximum canvas size: 28" (71cm)

Material: Aluminium

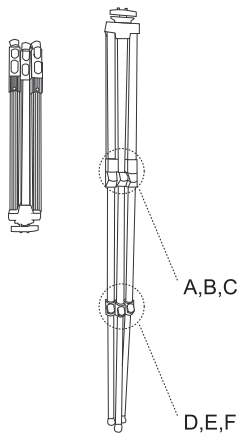
Estimated assembly time: 1 min

Components



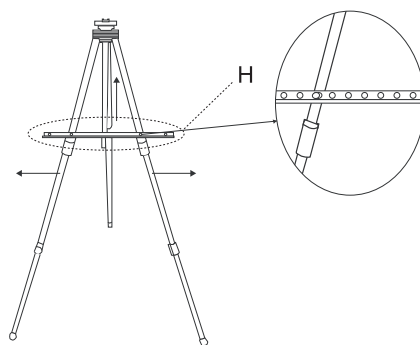
Assembly

Step1



Unlock A. B.C. D. E. F locker. Adjust the length of the leg and lock the 6 lockers.

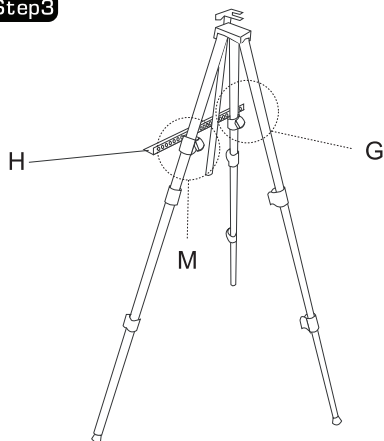
Step2



Adjust the 3 legs until it cannot move. Hang H on the easel.

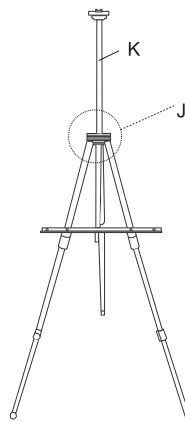
Assembly

Step3



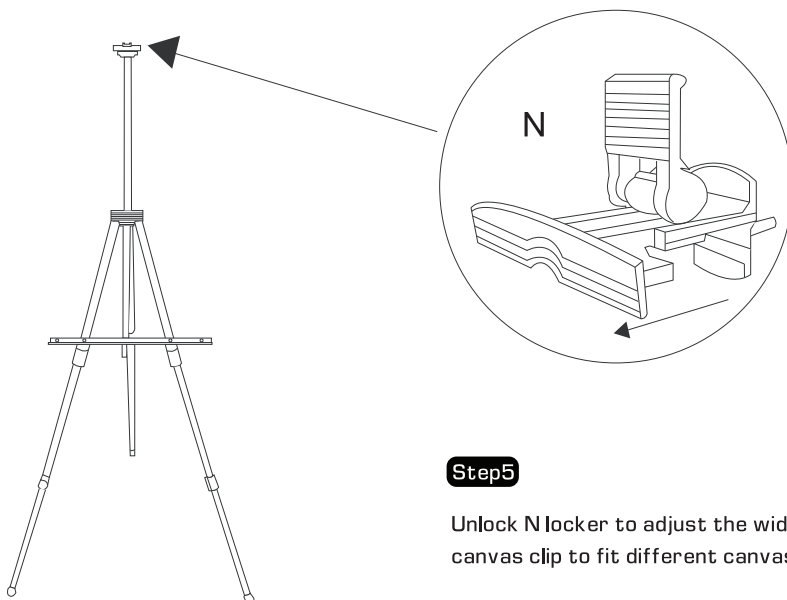
Unlock M, G locker to adjust the height of H.

Step4



Unlock J locker to adjust the length of main canvas holder K to fit different canvas size.

Assembly



Step5

Unlock N locker to adjust the width of canvas clip to fit different canvas thickness.

Product Warranty – Valid for Australian Customers Only

Officeworks Ltd warrants that this product will be free from defects and work as intended for 3 years from the date of purchase by the original customer.

If the product has any defects or does not work as specified during the Warranty Period, Officeworks will, at its election and at its expense, repair or replace the product.

This warranty does not apply:

- to cosmetic damage;
- to damage caused by consumables used in connection with the product;
- where the product has not been used in accordance with all provided instructions;
- to damage arising from fair wear and tear;
- where the product has not been subject to reasonable use;
- where the product has been intentionally or negligently damaged; and/or
- if the customer has attempted to repair the product.

To make a claim under this warranty, please return your product with your receipt or proof of purchase to your nearest Officeworks store or contact 1300 633 423.

This warranty is provided in addition to any rights you may be entitled to under the Competition & Consumer Act 2010. Our goods come with guarantees that cannot be excluded under the Australian Consumer Law. You are entitled to a replacement or refund for a major failure and compensation for any other reasonably foreseeable loss or damage. You are also entitled to have the goods repaired or replaced if the goods fail to be of acceptable quality and the failure does not amount to a major failure.

OFFICEWORKS LTD
236-262 EAST BOUNDARY ROAD
EAST BENTLEIGH VIC 3165 AUSTRALIA



Thank you for your purchase. Please retain your receipt to validate warranty.

If you would like to know more about our Born art range, please visit www.officeworks.com.au