

J.BURROWS

.....

INSTRUCTION MANUAL

MULTI DEVICE SMARTSCROLL MOUSE
ELITE MS310



OFFICEWORKS LTD



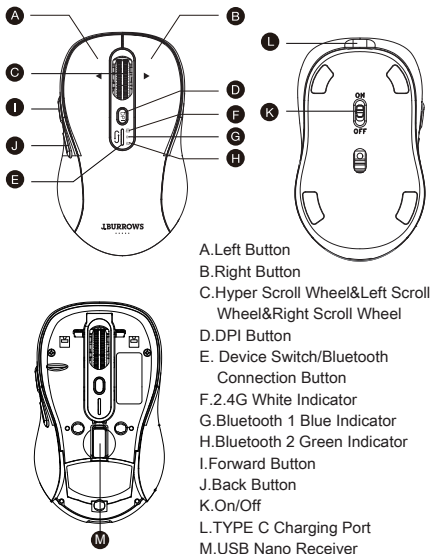
Compatible with:
Windows® 8 or later
Mac OS X 10.10 or later
iOS 13 or later
Android™ OS 5.0 or later

Product Specifications

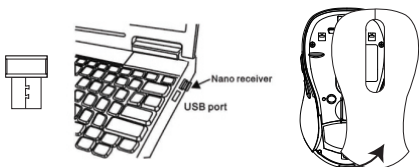
Multi device mouse connects up to three devices either via Bluetooth or via the included pre-paired USB receiver.

Model	Elite MS310
Officeworks Product Code	JBMS310BK/JBMS310WE
Dimensions	104.78 x 61.01 x 39.18mm
Resolution	1000/1600/2400/3200 DPI switching
Power Input	5V $\overline{\text{DC}}$ 1A
Battery	3.7V, 500mAh

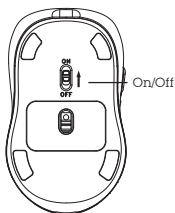
Installation Guide



1. Insert the USB nano receiver (stored inside the mouse) into your computer's USB port.

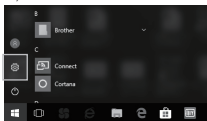


2. Turn the power on, your device will connect to the mouse.
Suggest charging the mouse with the charging cable included in the packaging before first use.



3. Bluetooth Pairing

- 1). Turn on the mouse.



- 2). Press the device switch/Bluetooth connection button to select Bluetooth mode 1 or 2. Press and hold the device switch/Bluetooth connection button to enter pairing mode, the Bluetooth mode indicator in blue or green light will flash.

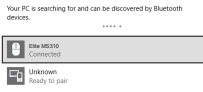
- 3). Click the "Bluetooth devices" button in the computer (Windows) settings.



4).Click the "Add or remove Bluetooth devices" button.



5).Select "Elite MS310", and click Pair button.



6).When the Bluetooth "Elite MS310" is connected, the mouse can be used normally.



7).Mac OS System
Please follow the Bluetooth installation steps (1~2) before pairing.
Go to "System preferences" and then select the "Bluetooth" option.



8).Select "Elite MS310" and press Pair.



9).If installed completely,the mouse can be used normally.

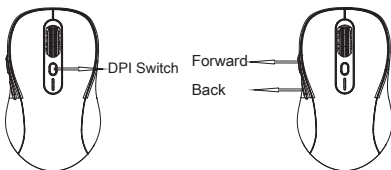
4. Easy Switch between Three Devices

This mouse can connect up to three devices either via Bluetooth or via the included pre-paired USB receiver. Press the device switch/Bluetooth connection button to switch the mouse into USB receiver mode (indicator in white light) or Bluetooth mode (indicator in blue or green light).

5. The initial DPI is 1600, to adjust the DPI setting press the DPI button.

This will enable you to adjust DPI setting between 1000/1600/2400/3200.

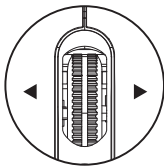
Forward and back buttons only work in Windows system, and will not function in Mac OS.



6. Hyper scroll&Left scroll&Right scroll

* When you are browsing an Excel file or a website, you could go to the top or bottom of the file or website quickly by giving the scroll wheel a up or down speed.

* When you are browsing an Excel file or a website, you could go to the left side or right side of the file or website quickly by pressing the scroll wheel to the left or right.

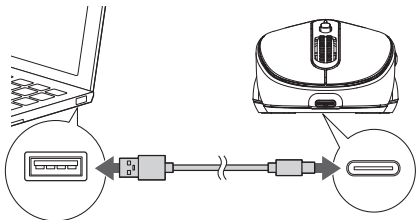


7. If no keys are pressed on the mouse within a period of 8 minutes under USB receiver connection or 30 minutes under Bluetooth connection, the mouse will automatically go into sleep mode. To “wake up” the mouse from sleep mode, press any key.

Please note: Moving the mouse will not wake up the mouse.

8. Charging

- * Charging time: 2-3 hours.
- * Charging indicator: red light on (below scroll wheel), light off after full charged.
- * Working time: about 80 hours.
- * Charge the mouse before first use.
- * Use the charging cable included in the packaging for charging.
- * Do not use other charging cables exceeding 5V to avoid product damage.



9. Low power indication

The LED indicator on the top cover will blink when the battery is low power.

The Bluetooth® word mark and logos are registered trademarks owned by Bluetooth SIG, Inc. and any use of such marks by Officeworks Ltd is under license.

Windows is a trademark of the Microsoft Corporation in the United States and other countries.

Mac and Mac OS are trademarks of Apple Inc., registered in the U.S. and other countries.

Android™ is a trademark of Google LLC.

IOS is a trademark or registered trademark of Cisco in the U.S. and other countries and is used under license.