

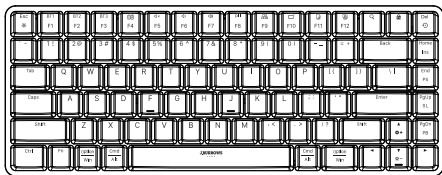
J.BURROWS

•••••

Compact Mechanical Backlit Keyboard

Instruction Manual

Elite KB400



MADE IN CHINA

Compatible with:
Windows® 10 or later
Mac OS X 10.10 or later
iOS 13 or later, Android™
OS 5.0 or later

Contents



x1



x1



x1



x1



x1

1. Keyboard
2. USB-A / USB-C receiver
3. Quick start guide

4. Instruction Manual
5. Charging cable

Functions

The shortcut keys are shortcuts to various functions on your device. They are located on the top row of the keyboard.

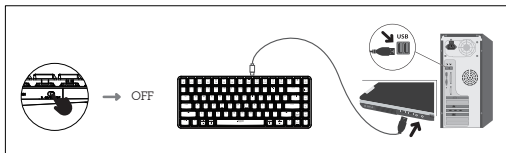
KEY	Function			
	Windows	Mac	Android	iOS
	Bluetooth 1	Bluetooth 1	Bluetooth 1	Bluetooth 1
	Bluetooth 2	Bluetooth 2	Bluetooth 2	Bluetooth 2
	Bluetooth 3	Bluetooth 3	Bluetooth 3	Bluetooth 3
	Low power/ Charging indicator	Low power/ Charging indicator	N/A	N/A
	Mute	Mute	Mute	Mute
	Volume down	Volume down	Volume down	Volume down
	Volume up	Volume up	Volume up	Volume up
	Play/Pause	Play/Pause	Play/Pause	Play/Pause
	Mission control	Open launchpad	N/A	N/A
	Minimize applications	Minimize applications	N/A	N/A
	Copy	Copy	Copy	Copy
	Paste	Paste	Paste	Paste
	Search	Search	N/A	Search
	Fn Lock	Fn Lock	Fn Lock	Fn Lock

Note

1. Press + to turn ON/OFF the backlight.
2. Press + to increase the brightness of the backlight, Press + to decrease the brightness of the backlight.
3. Press + more than 3 seconds to restore setting.
4. When the device is first used, the multimedia function is activated by default. Direct to press - for multimedia functions.
5. Press to lock the multimedia function, the F-keys no longer function.
6. The multimedia keys may vary depending on the versions of Windows, iOS, Android, MacOS.
7. The product comes with an operation memory function.

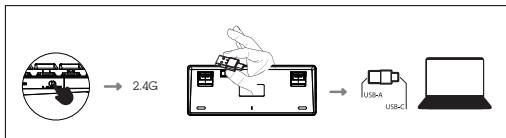
Installation Guide - Wired Connectivity

Switch to "OFF" (the mid location) and connect the cable






Installation Guide - 2.4GHz Connectivity

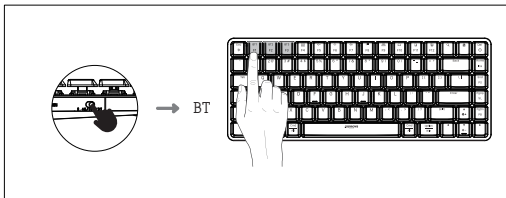
Switch to "2.4G" (the left-side) and insert dongle to the device. Retrieve USB receiver from the bottom of keyboard. Plug the USB receiver in computer port.



Installation Guide - Bluetooth Connectivity

BT Bluetooth


- Switch to "BT" (the right-side) to BT mode.
- Short press  ,  or  , the white light flash quickly.



Now it is in Bluetooth pairing mode. Go to Bluetooth setting on your device and select **Elite KB400**. Follow the onscreen instructions to complete the pairing. The light will turn off once Bluetooth pairing is successful.

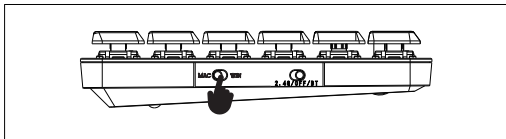
Note

When the multimedia function was locked, short press  +  ,  or

 , the white light flash quickly. It is in Bluetooth pairing mode.

Installation Guide - System

- Find the switch on the left-side of the keyboard. You can choose "MAC" for MAC and iOS, choose "WIN" for Windows and Android.

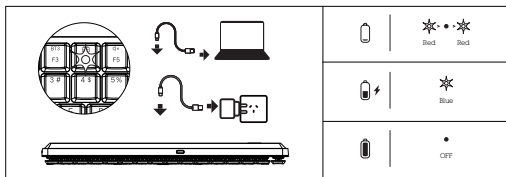


Indicator Light

The red LED light on  flash alternately when keyboard has low power.

The blue LED light on  will be on when charging.

The light will be off when fully charged. Full charging time is approximately 4 hours.



Note

Fully charge your Elite KB400 before first use. Before charging, make sure the wireless keyboard turned off.

Specifications

- Product Model: Elite KB400
- Officeworks Product Code: JBKB400
- Bluetooth Version: 5.0
- Rating: 3.7V \approx 150mA (Max brightness)
- Working Frequency: 2.4GHz
- 5 device connectivity: 2.4GHz x1, Bluetooth 5.0 x3, wired x1
- Operating range: 8m
- Receiver: USB-A / USB Type-C®
- Rechargeable battery: Lithium 2000mAh
- Dimensions: 311 x 121 x 26.35 mm
- Cable length: 1.5 M
- System Requirements:
Windows® 10 or later, Mac OS 10.10 or later
iOS 13 or later, Android™ OS 5.0 or later

Windows is a trademark of the Microsoft Corporation in the United States and other countries.
Mac and MacOS are trademarks of Apple Inc., registered in the U.S. and other countries.

The Bluetooth® word mark and logos are registered trademarks owned by Bluetooth SIG, Inc.
and any use of such marks by Officeworks Ltd is under license.

Android is a trademark of Google LLC.

iOS is a trademark or registered trademark of Cisco in the U.S. and other countries and is used
under license.



Do not connect this cable to products other than Elite KB400 wireless keyboard. Connecting this
cable to other devices might cause damage to both cable and the device.