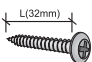
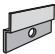
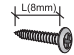


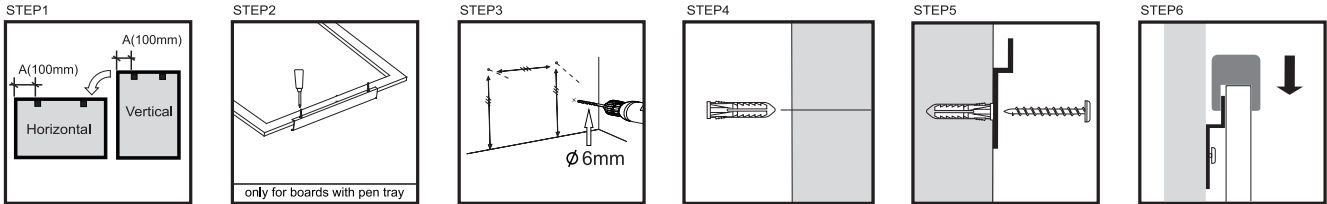
190mm

120mm

INSTRUCTIONS

TOOLS NEEDED: Drill, Hammer, Pencil, Phillips Head Screwdriver, Tape Measure

Parts & Qty				
Applicable product size(mm)	Drywall Plastic Anchors	Screws (1) 	Wall Brackets 	Screws (2) 
				only for boards with pen tray
600x450	3	2	2	2
584x279	3	2	2	2
900x450	3	2	2	2
900x600	3	2	2	2
490x370	3	2	2	2
750x500	3	2	2	2
1200x900	3	2	2	2



1. Determine board Installation direction (Vertical/Horizontal) and target height on the wall. Markdown the two "A" positions, 100mm away from each board edge on the wall.
2. Step 2 is only for boards with a pen tray. To install the pen tray to the board, screw in two screws using a Phillips Head Screwdriver.
3. Drill two holes into the wall on the two "A" positions.
4. Hammer the two supplied plastic anchors into the holes in the wall.
5. Attach the two supplied brackets to the plastic anchor holes by using a Phillips Head Screwdriver to secure the screws into the plastic anchors.
6. Attach the board onto the brackets and ensure the brackets are sitting well into the gap between the frame and board backing.