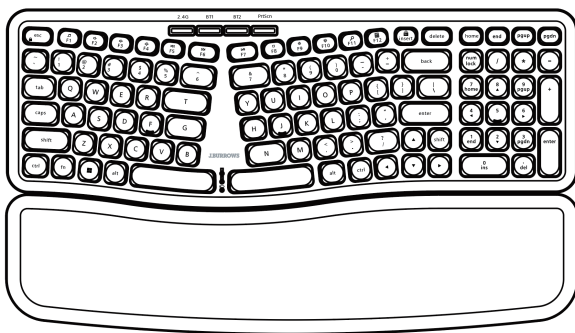


J.BURROWS

INSTRUCTION MANUAL

WIRELESS KEYBOARD MOUSE COMBO

JBMK450



 **Bluetooth®**

OFFICEWORKS LTD
MADE IN CHINA

Compatible with:
Windows® 10 or later
Mac OS X 10.10 or later
Android™ 10 or later
iOS system.

Contents



x1



x1



x1



x1



x1



x1



x2

1. Keyboard
2. Mouse
3. USB-A receiver
4. Instruction manual
5. Quick start guide
6. AA battery x 1
7. AAA battery x 2

Functions

The shortcut keys are shortcuts to various functions on your device. They are located on the top row of the keyboard.

Direct to press esc to insert, the F-keys and insert key have function.

Press Fn+esc to insert for multimedia function.

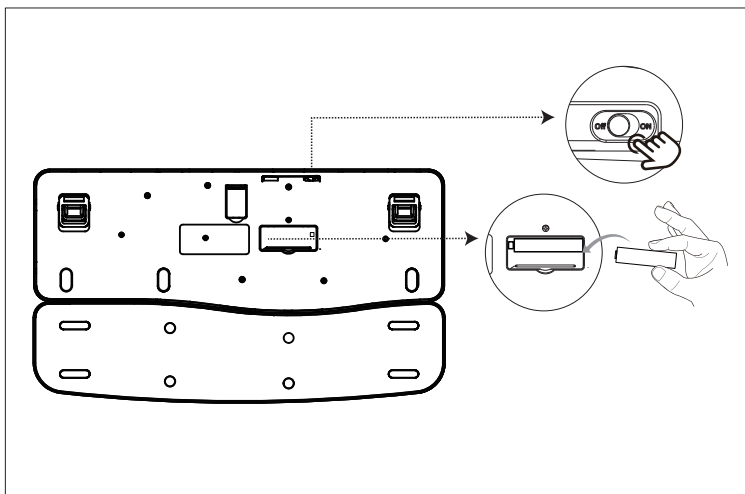
Icon	Mac	Windows	iOS	Android
	Fn Lock	Fn Lock	Fn Lock	Fn Lock
	N/A	Media player	N/A	N/A
	Volume -	Volume -	Volume -	Volume -
	Volume +	Volume +	Volume +	Volume +
	Mute	Mute	N/A	Mute
	Previous track	Previous track	N/A	Previous track
	Next track	Next track	Next track	Next track
	Play/Pause	Play/Pause	N/A	Play/Pause
	N/A	Stop	N/A	Stop
	Brightness -	Brightness -	Brightness -	Brightness -
	Brightness +	Brightness +	Brightness +	Brightness +
	Search	Search	Search	N/A
	Calculator	Calculator	Calculator	Calculator
	Scroll Lock	Scroll Lock	Scroll Lock	Scroll Lock

Note

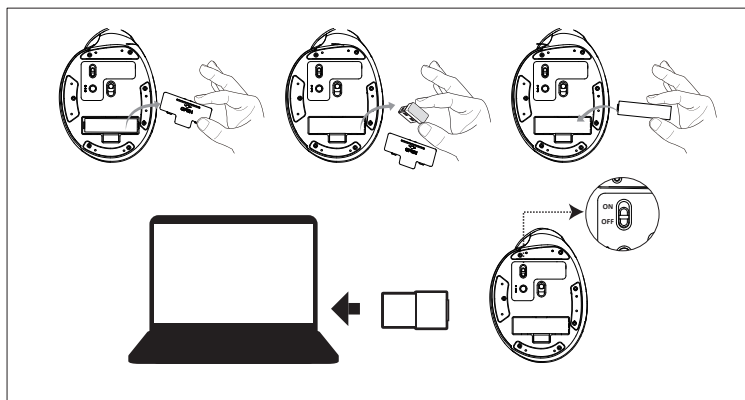
The multimedia keys may vary depending on the versions of Windows, Android, iOS and MacOS.

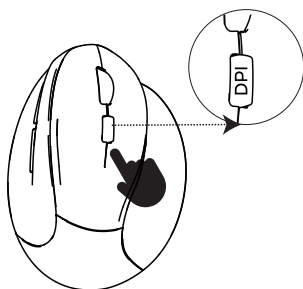
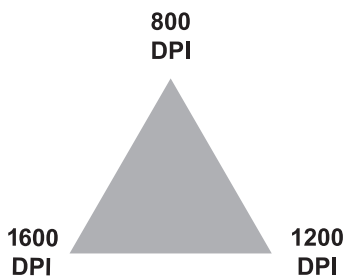
Installation Guide - 2.4GHz Connectivity

Open the battery cover on keyboard bottom. Put in 2 pcs AAA battery.
Turn on the power switch (Red light flash).

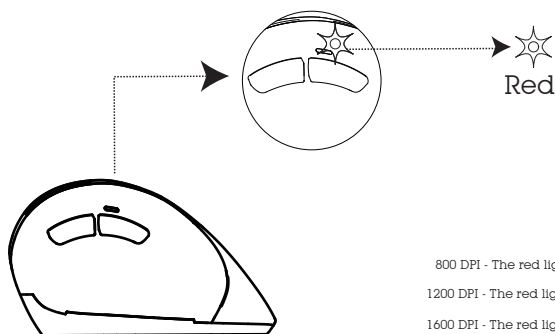


Open the battery cover on mouse bottom. Put in 1 pc AA battery.
Take out USB receiver from the receiver compartment of the mouse bottom.
Turn on the power switch (Red light flash).
Plug the USB receiver in computer port.
The keyboard indicator light will always on and mouse light turn off
once 2.4G pairing is successful.





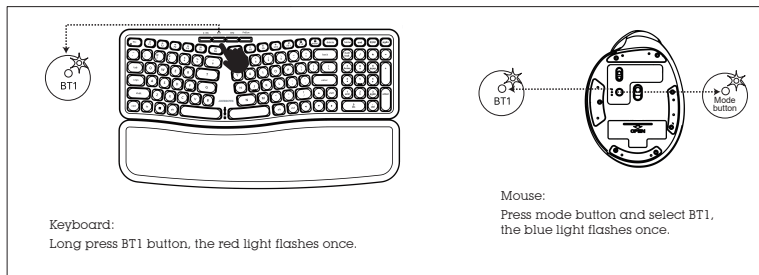
Press DPI button to adjust DPI.



800 DPI - The red light will flash once
1200 DPI - The red light will flash twice
1600 DPI - The red light will flash thrice

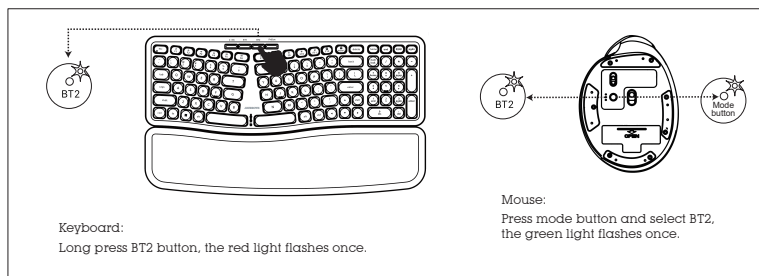
Installation Guide - Bluetooth Connectivity

Bluetooth® Connecting to bluetooth device 1.



Now it is in Bluetooth pairing mode. Go to Bluetooth setting on your device and select **JBMK450 KB/MS**. Follow the onscreen instructions to complete the pairing. The keyboard indicator light will always on and mouse light turn off once Bluetooth pairing is successful.

Bluetooth® Connecting to bluetooth device 2.



Now it is in Bluetooth pairing mode. Go to Bluetooth setting on your device and select **JBMK450 KB/MS**. Follow the onscreen instructions to complete the pairing. The keyboard indicator light will always on and mouse light turn off once Bluetooth pairing is successful.

Note

Switching bluetooth devices: After setting up connections with up to 2 bluetooth devices, you can switch among them by press BT button on keyboard and connect button on mouse.

Specifications

- Product Model: JBMK450
- Bluetooth Version: 5.1
- Rating: 3V \approx 20mA keyboard; 1.5V \approx 8mA mouse
- 3 device connectivity: 2.4GHz xl, Bluetooth 5.1 x 2
- Operating range: 10m
- Receiver: USB-A
- Keyboard battery: AAA battery x 2
- Mouse battery: AA battery x 1
- Keyboard dimensions: 416x 236 x 40 mm
- Mouse dimensions: 124 x 90 x 73 mm
- Keyboard weight: 588 ± 20 g
- Palm rest weight: 242 ± 20 g
- Mouse weight: 106 ± 10 g
- System Requirements:
Windows® 10 or later, Mac OS 10.10 or later
Android™ 10 or later, or iOS system.

Windows is a trademark of the Microsoft Corporation in the United States and other countries.
Mac and MacOS are trademarks of Apple Inc., registered in the U.S. and other countries.

The Bluetooth® word mark and logos are registered trademarks owned by Bluetooth SIG, Inc.
and any use of such marks by Officeworks Ltd is under license.

Android is a trademark of Google LLC.

iOS is a trademark or registered trademark of Cisco in the U.S. and other countries and is used
under license.