

J.BURROWS

.....

INSTRUCTION MANUAL

JBQ90PRSNT

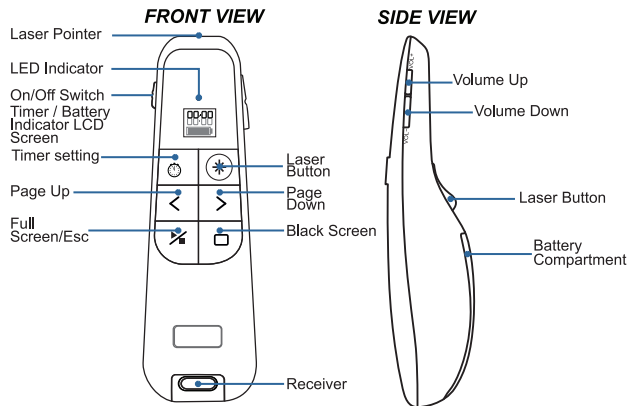


Wireless Presenter with Built-in Laser
Pointer & Timer



①

DESCRIPTION



* Timer to set time intervals for meeting duration, discussion or breaks.

④

Product Warranty – valid for Australian customers only

Officeworks Ltd warrants that this product will be free from defects and work as intended for 3 years from the date of purchase by the original customer.

If the product has any defects or does not work as specified during the Warranty Period, Officeworks will, at its election and at its expense, repair or replace the product.

This warranty does not apply: • to cosmetic damage; • to damage caused by consumables used in connection with the product (such as batteries); • where the product has not been used in accordance with all provided instructions; • to damage arising from fair wear and tear; • where the product has not been subject to reasonable use; • where the product has been intentionally or negligently damaged; and/or • if the customer has attempted to repair the product. To make a claim under this warranty, please return your product with your receipt or proof of purchase to your nearest Officeworks store or contact 1300 633 423.

This warranty is provided in addition to any rights you may be entitled to under the Competition & Consumer Act 2010. Our goods come with guarantees that cannot be excluded under the Australian Consumer Law. You are entitled to a replacement or refund for a major failure and compensation for any other reasonably foreseeable loss or damage. You are also entitled to have the goods repaired or replaced if the goods fail to

OFFICEWORKS LTD
236-262 EAST BOUNDARY ROAD
EAST BENTLEIGH VIC 3165 AUSTRALIA

** Windows is a trademark of the Microsoft Corporation in the United States and other countries.

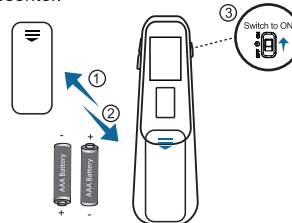
** Mac is a trademark of Apple Inc. in the United States and other countries.

** Android is a trademark of Google LLC.

②

HARDWARE INSTALLATION

1. Remove the battery cover and insert (2) AAA batteries into the presenter and turn on the presenter.



2. Turn your computer on and let your computer load completely. Now insert the USB receiver into your computer's USB port. Your operating system will automatically detect your device.

TROUBLESHOOTING TIP

Q: How to re-establish connection to the wireless receiver?

- A:
- Unplug the receiver and plug it into a different USB port.
 - Make sure new batteries are installed.
 - Make sure the device is within 30 cm of the USB receiver and press and hold both "Right Click" and "Volume +".
 - The LED indicator should blink and the device should be connected.

⑤

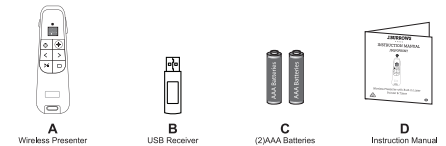
SPECIFICATIONS

- Wireless Technology: 2.4GHz Wireless
- Wireless Range: up to 20 metres
- Laser Safety Class: Class II
- Laser Power Output: Maximum 1 mW
- Laser Beam Distance: up to 200 metres
- Wavelength: 650 ± 5 nm
- Battery: 2 x AAA battery
- Working Voltage: 3.0 V
- Hand Orientation: Universal (Right & Left)
- Buttons: 9 Buttons (Timer, Laser, Page Up & Down, Slideshow, Volume Up & Down)
- Dimension: 129 x 38 x 29 mm
- Weight: 50g

REQUIREMENTS

- System Requirements: Windows® XP or later, Mac OS X 10.7 or later, Android™ OS 4.3 or later.
- An available USB port for USB receiver

CONTENT



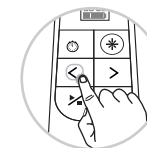
③

USING THE TIMER

1. Hold the "Timer Setting" button for 3 seconds, you will see digits in "Minute" flashing on the LCD screen.
2. Press "Page Up" or "Page Down" to switch between "Minute" to "Hour".
3. Press "Volume Up" or "Volume Down" buttons to adjust hour or minute.
4. After setting, press the "Timer Setting" button again to start counting up.
5. The silent alarm will vibrate with 5, 2 and 0 minutes left.
6. The presenter will continue to operate after the timer has reached 0 minutes left.



Timer Setting



Hour/Minute shift



Time Adjustment

WARNING

Avoid direct exposure to the eyes and keep away from children and pets as this product is not a toy and can cause serious eye damage.

LASER RADIATION

DO NOT STARE INTO BEAM

CLASS 2 LASER PRODUCT WAVELENGTH:650nm MAX.OUTPUT: <1mW CW



⑥