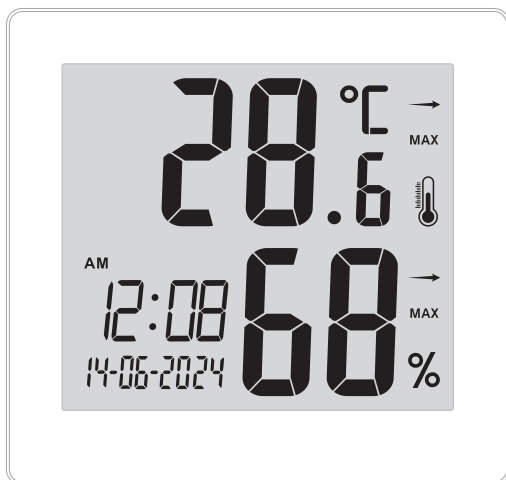


J.BURROWS
.....

INSTRUCTION MANUAL

DIGITAL CLOCK
JBLCDCLK



- 1 -

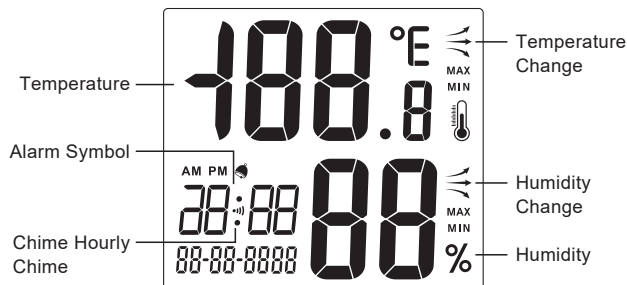
MAIN TECHNICAL INDICATORS

1. Time deviation: ± 1 s/Day
2. Temperature deviation: $\pm 1^{\circ}\text{C}$ (-10°C - 50°C), other ± 20
3. Temperature measurement range: -10°C - 50°C
4. Humidity deviation: $\pm 5\%\text{RH}$ ($40\%\text{RH}$ - $80\%\text{RH}$), other $\pm 8\%\text{RH}$
5. Humidity measurement range: $10\%\text{RH}$ - $99\%\text{RH}$
6. Working voltage: DC 1.5V
7. Battery : AAx1, 1.5V

FUNCTIONAL FEATURES

1. Multi-function display of temperature, humidity, time and date on the same screen
2. Display maximum and minimum temperature and humidity
3. Temperature and humidity trend change
4. Celsius/Fahrenheit temperature unit switch, $^{\circ}\text{C}/^{\circ}\text{F}$
5. Alarm clock and hour reminder function

OPERATING INSTRUCTIONS



- 2 -

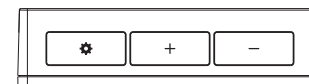
INSTRUCTIONS

1. Install the battery

Open the battery cover, put 1pc of AAA battery into the battery box in the correct direction, and cover the battery box.

2. TIME SETTING

- Under the time display, press and hold [⌘] button 2 seconds to setting time and calendar, in sequence: hour→minute→year→month→date→exit.
- During the setting process, the digit blinks. Press [+] once, setting value increased; Press [-] once, setting value decreased.
- Press [⌘] button or without any operation within 20 seconds to confirm the setting and exit.
- Under time display, press and hold [+] button switch over 12/24.
- Under 12HR status, AM appearance in the morning, PM appearance in the afternoon.



3. ALARM SETTING

- Under time display, press [⌘] button switch to alarm display, the " : " symbol stop blinking.
- Under alarm display, press [+] button to turn on alarm function, ⌘ symbol appearance, press [+] button again to turn off alarm function, ⌘ symbol disappearance.
- Under alarm display, press and hold [⌘] button 2 seconds to set the alarm time, in sequence: hour→minute→exit.
- During the setting process, the digit blinks. Press [+] button once, setting value increased; Press [-] button once, setting value decreased.
- Press [⌘] button or without any operation within 20 seconds to confirm the setting and exit.
- When alarming, press any button to stop the alarm.

- 3 -

- When alarming, Buzzer for 2 minutes and stop automatically without any operation, it will alarming in the same time of next day.

4. TEMPERATURE AND HUMIDITY

- Temperature working range: -10°C to 50°C . Any temperature out of this range will show: LL.L for the low end displays and HH.H for the high end displays.
- Humidity working range: 10% to 99%. Any humidity out of this range will show: LL.L for the low end displays and HH.H for the high end displays.
- Under time display, Press [+] button switch over $^{\circ}\text{C}$ / $^{\circ}\text{F}$.
- Under time display, Press [-] button to check history records of MAX/ MIN values of temperature.
- At 0:00 automatic clear the MAX/MIN data.

5. HOURLY CHIME SETTING

- Under time display, press and hold [-] button 2 seconds to turn on hourly chime function, ⌘ symbol appearance, press [-] button again to turn off hourly chime function, ⌘ symbol disappearance.
- When turn on hourly chime function with a "BI" sound on hour time.

6. TEMPERATURE AND HUMIDITY TREND

- When temperature increase more than 1°C , ↗ the symbol appearance.
- When temperature reduce more than -1°C , ↘ the symbol appearance.
- When humidity increase more than 3%, ↗ the symbol appearance.
- When humidity reduce more than -3%, ↘ the symbol appearance.

ATTENTION

1. Keep away from high temperature, high humidity, strong magnetic areas and dusty environment.
2. Please replace the battery when the battery voltage is insufficient.
3. The surface of the product can be gently wiped with a soft cloth dipped in neutral detergent.

- 4 -

PRODUCT WARRANTY— VALID FOR AUSTRALIAN CUSTOMERS ONLY

Officeworks Ltd warrants that this product will be free from defects and work as intended for 1 year from the date of purchase by the original customer. If the product has any defects or does not work as specified during the Warranty Period, Officeworks will, at its discretion and at its expense, repair or replace the product. This warranty does not apply:

- to cosmetic damage;
- to damage caused by consumables used in connection with the product (such as batteries);
- where the product has not been used in accordance with all provided instructions;
- to damage arising from fair wear and tear;
- where the product has not been subject to reasonable use;
- where the product has not been intentionally or negligently damaged and/or;
- if the customer has attempted to repair the product.

To make a claim under this warranty, return your product with your receipt or proof of purchase to your nearest Officeworks store or contact 1300 633 423.

This warranty is provided in addition to any rights you may be entitled to under the Competition and Consumer Act 2010. Our goods come with guarantees that cannot be excluded under the Australian Consumer Law. You are entitled to a replacement or refund for a major failure and compensation for any other reasonably foreseeable loss or damage. You are also entitled to have the goods repaired or replaced if the goods fail to be of acceptable quality and the failure does not amount to a major failure.

MADE IN CHINA
OFFICEWORKS LTD.

- 5 -