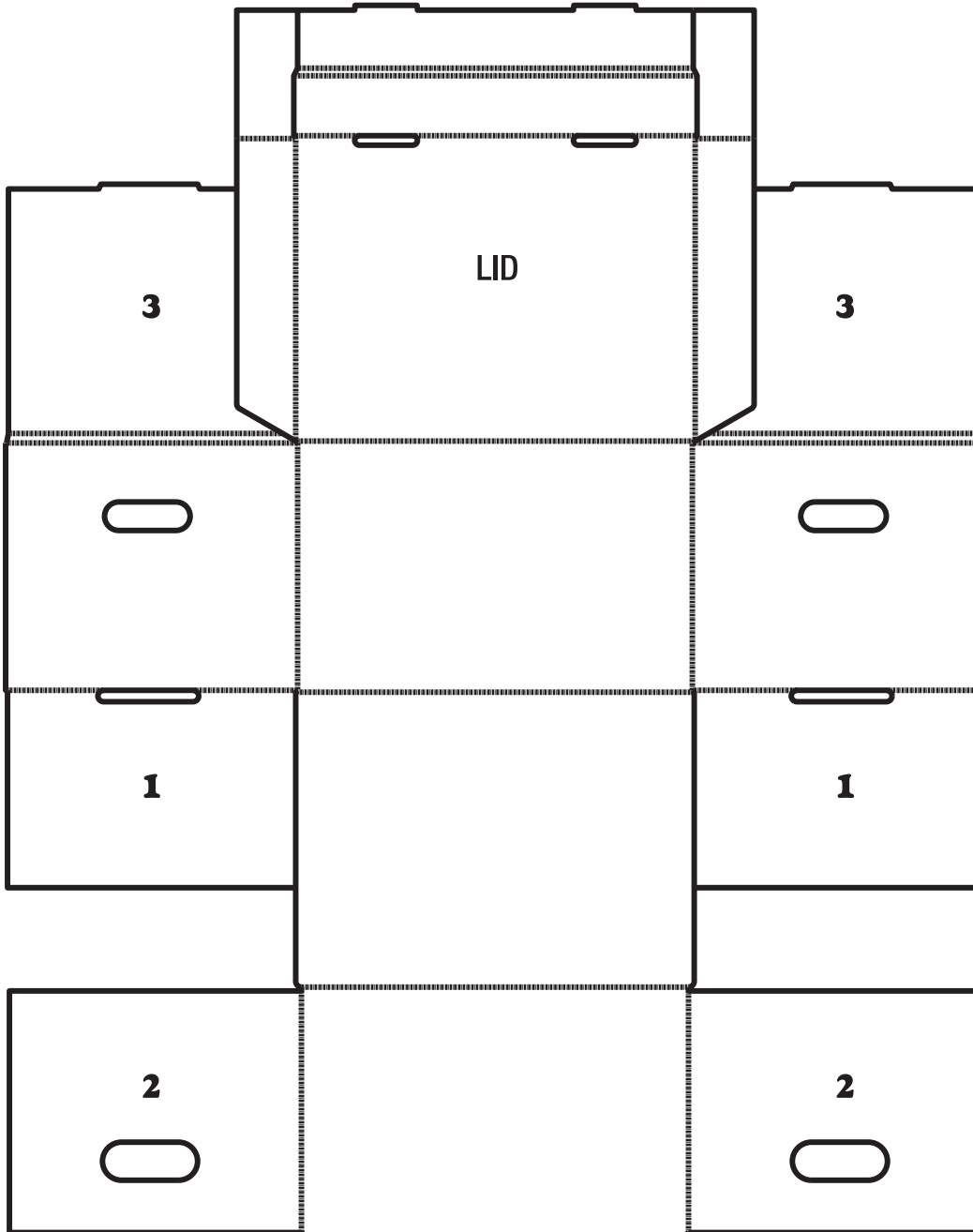


ASSEMBLY INSTRUCTIONS



BOX

Step 1.
Raise sides containing
flaps 1 and 3.

Step 2.
Fold in flaps marked
1 to form base
inner layer.

Step 3.
Raise side containing
flaps marked 2.

Step 4.
Fold in flaps marked
2 to form wall inner
layers.

Step 5.
Fold over flaps marked
3 and lock tabs into
base slots.

LID

Step 1.
Fold in 2 sides and
form right angles with
shorter flap extensions.

Step 2.
Roll over front flaps
and lock tabs into slots