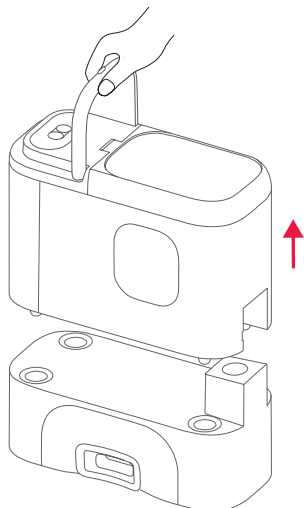


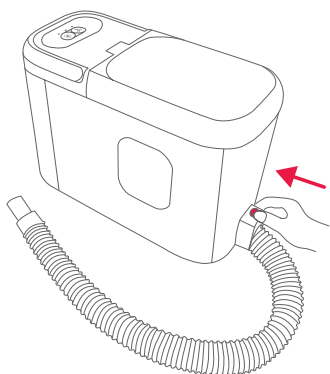


# ROBOTIKA

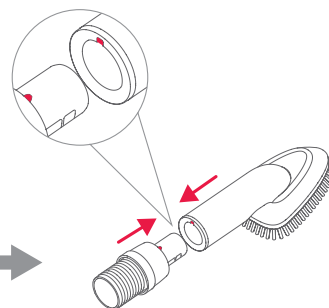
- 1 Remove the vacuuming module



- 2 Connect the hose and the vacuuming module

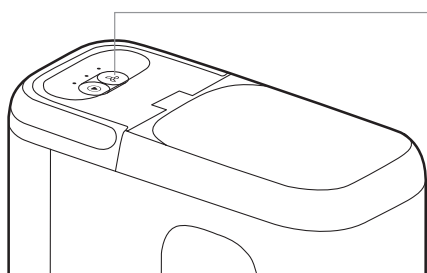


- 3 Connect the hose and the vacuuming module



\* the following example uses a cleaning brush

- 4 Turn on the vacuuming module.



**Buttons** (available when the detachable vacuuming module is removed)

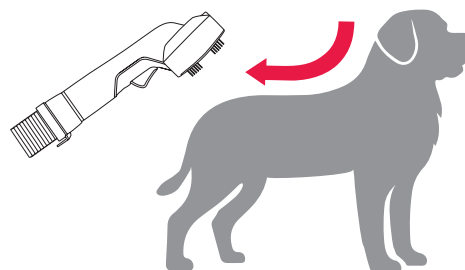
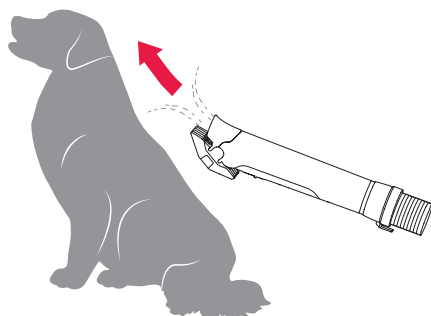


**Suction level button:** Short press to switch between suction levels (3 levels switchable in a cyclic way)

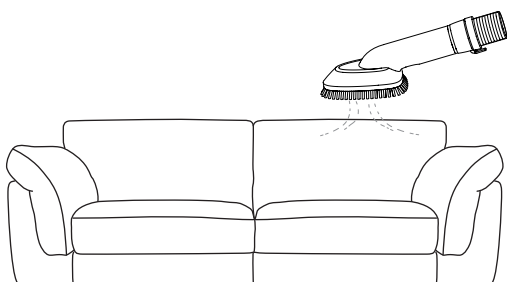


**Suction level button:** Start/Pause button: Short press to start or pause

- 5 Start grooming



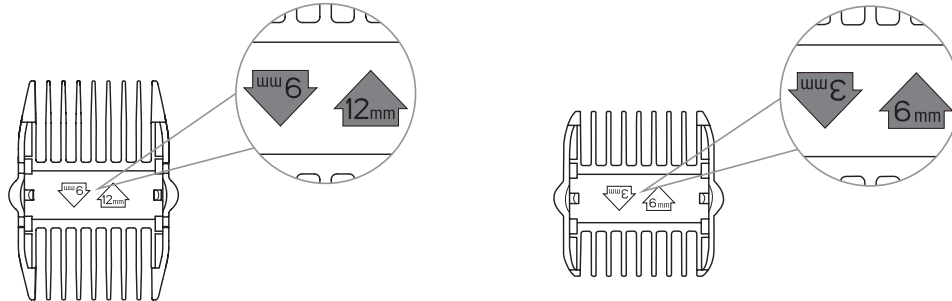
\* Beginners are advised to use it with hair clipper guards. Be cautious as the blade is sharp.



# Quick Start Guide

## 6 Install and remove hair clipper guards

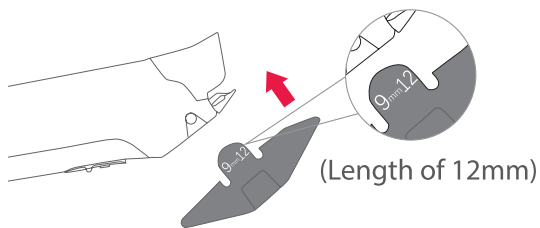
The size marked on the hair clipper guards indicates the length of hair left on the pet.



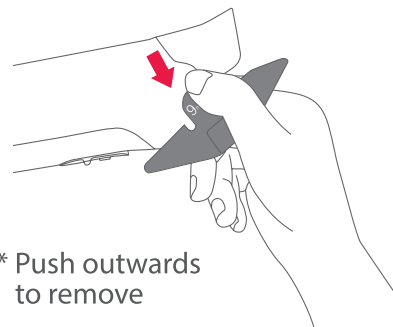
## 6 Install and remove hair clipper guards

The size marked on the hair clipper guards indicates the length of hair left on the pet.

\* Select hair clipper guards according to your hairstyle needs, which can leave hair lengths of 3mm, 6mm, 9mm, and 12mm.



\* Align with the slot and push in



## 7 Install and remove the combs

Follow the instructions in the diagram below to install. If you want to replace with another comb, press the replacement button on the top of the handle to remove the current comb and replace it with a new one.

