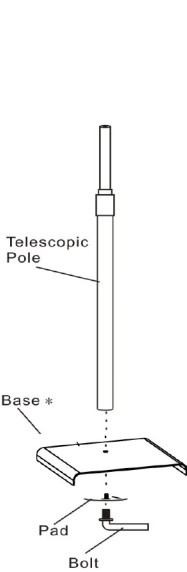


Sanitiser Dispenser

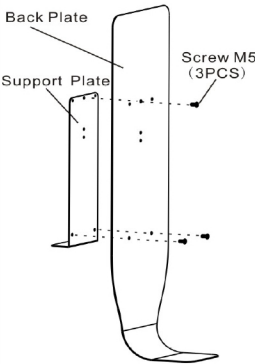
Automatic, Clean and Hygienic



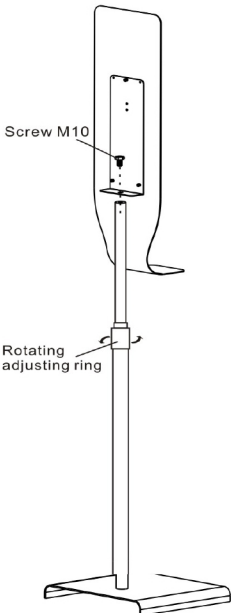
Installation for stand components



A Install Pole and Base

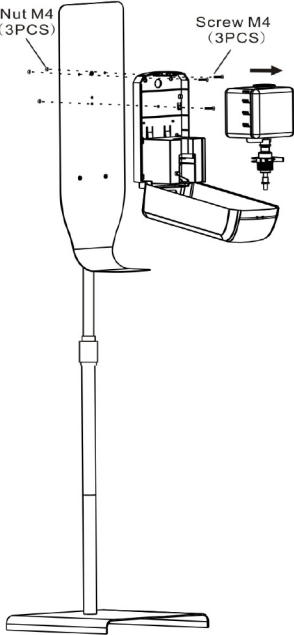


B Install Back Plate

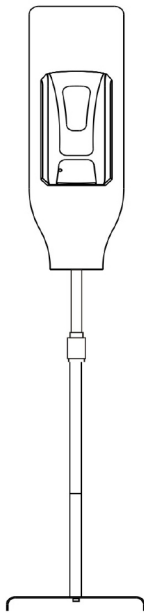


After rotating and loosening the adjusting ring you can pull the extension rod up and down. Adjust it to a proper height and then tighten the adjusting ring

C Install Stand and Adjust Height



D Install Machine



*Fix 4 pcs C size batteries. Fill the liquid and turn on the switch. Enjoy your Hand Sanitiser.

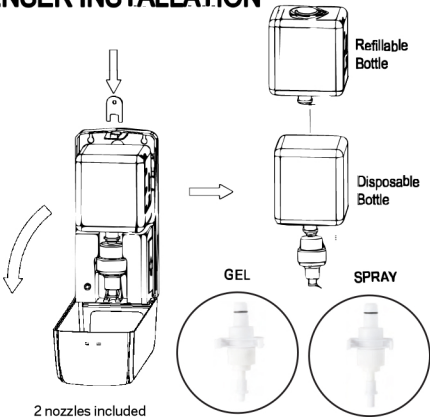
DISPENSER INSTALLATION



4X
4X
1X

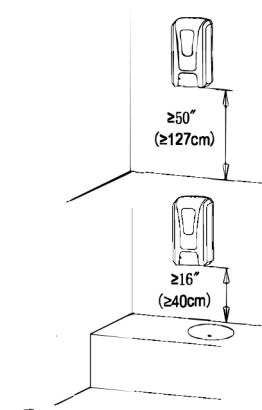
• Size: 13x11.5x27cm

A



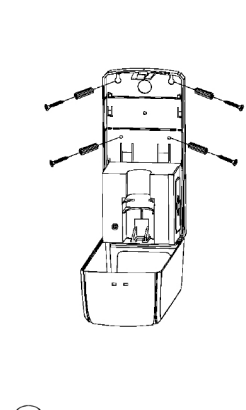
B

Recommended Installation Height



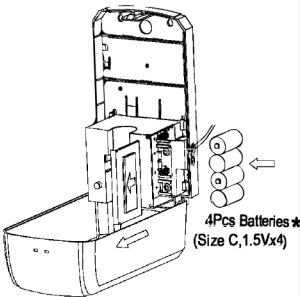
C

Installation with Screws

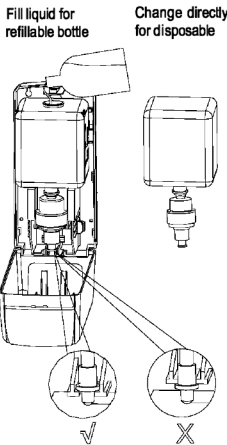


D

Install Batteries



E * Batteries not included



F



• Dual color LED: Green is working and Stand-by; Red is low battery alarm;
• Sensing Distance: 8-12cm

G