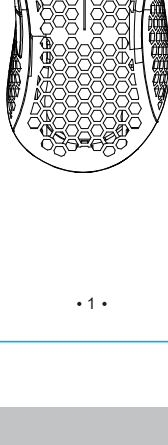




Typhon

INSTRUCTION MANUAL

RGB GAMING MOUSE MODEL: PRO MSE12

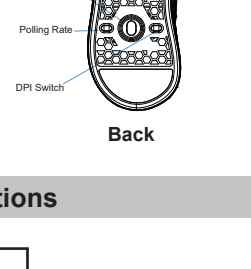


Compatible with:
Windows® XP or later

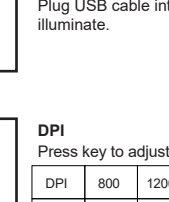


• 1 •

Product Functions



Front



Back

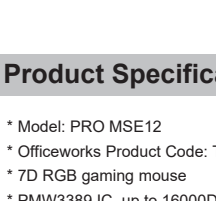
Usage Instructions



PLUG AND PLAY

Installation

Plug USB cable into computer USB port, the mouse lights will illuminate.



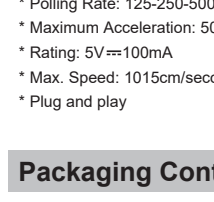
DPI

Press key to adjust DPI

DPI	800	1200	1600	2000	2400	3200	8000	Use driver up to 16000
Body Light	Red	Dark blue	Green	Purple	Orange	Sky blue	White	

After DPI confirmed, body light will return to breathing light mode.

• 2 •



Light

Press scroll wheel and back button together to change light. Press scroll wheel and forward button to turn off light. Press both buttons again to turn lights back on. There are 7 light modes.

Product Specifications

- * Model: PRO MSE12
- * Officeworks Product Code: TYGM007H
- * 7D RGB gaming mouse
- * PMW3389 IC, up to 16000DPI
- * HUANO switches, 20 million click lifetime for both left and right key
- * Perfect ergonomic with honeycomb shell
- * 1.8m USB paracord cable with magnet ring
- * Polling Rate: 125-250-500-1000Hz
- * Maximum Acceleration: 50G
- * Rating: 5V 100mA
- * Max. Speed: 1015cm/second
- * Plug and play

Packaging Contents

1. RGB Gaming Mouse x 1
2. Instruction Manual x 1

• 3 •

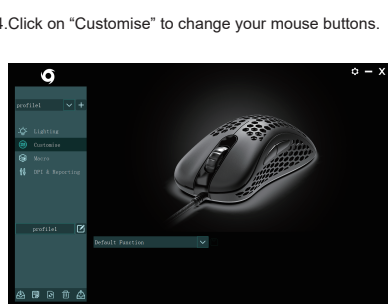
Advanced Driver Features

Drivers are compatible with Windows only.

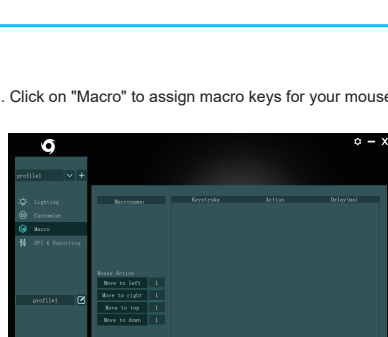
1. Visit www.officeworks.com.au/drivers to download the customisable drivers.
2. Once you have followed the installation steps, the driver icon will show up in your standard location.



3. Once you click on the driver icon, it will bring up the driver menu as shown below. Click on "Lighting" to change the light mode.

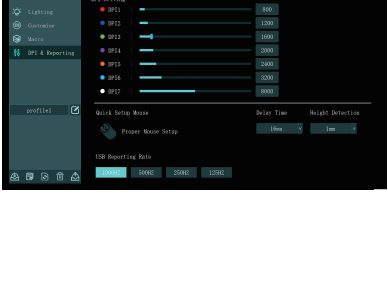


4. Click on "Customise" to change your mouse buttons.

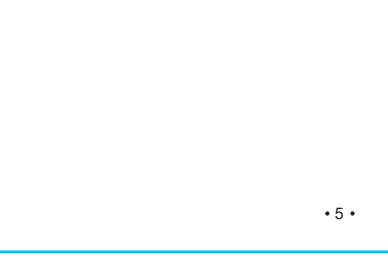


• 4 •

5. Click on "Macro" to assign macro keys for your mouse.



6. Click on "DPI & Reporting" to change the speed of your mouse cursor as well as adjust DPI settings.



• 5 •

WARNING

To prevent fire or shock hazard, do not expose the unit to rain or moisture.
To avoid electrical shock, do not open the cabinet, refer to service agent or qualified engineer only.

Product Warranty – Valid for Australian Customers Only

Officeworks Ltd warrants that this product will be free from defects and work as intended for 3 years from the date of purchase by the original customer.

If the product has any defects or does not work as specified during the Warranty Period, Officeworks will, at its election and at its expense, repair or replace the product.

This warranty does not apply:

- to cosmetic damage;
- to damage caused by consumables used in connection with the product;
- where the product has not been used in accordance with all provided instructions;
- to damage arising from fair wear and tear;
- where the product has not been subject to reasonable use;
- where the product has been intentionally or negligently damaged; and/or
- if the customer has attempted to repair the product.

To make a claim under this warranty, please return your product with your receipt or proof of purchase to your nearest Officeworks store or contact 1300 633 423.

This warranty is provided in addition to any rights you may be entitled to under the Competition & Consumer Act 2010. Our goods come with guarantees that cannot be excluded under the Australian Consumer Law. You are entitled to a replacement or refund for a major failure and compensation for any other reasonably foreseeable loss or damage. You are also entitled to have the goods repaired or replaced if the goods fail to be of acceptable quality and the failure does not amount to a major failure.

OFFICEWORKS LTD
236-262 EAST BOUNDARY ROAD
EAST BENTLEIGH VIC 3165 AUSTRALIA

Windows is a trademark of the Microsoft Corporation in the United States and other countries.

• 6 •

MADE IN CHINA