



Ensuring Software SuccessSM

TestComplete Automated Testing For The Masses

Script-free testing for new users. Powerful features for advanced users. Affordable for all users.

SmartBear TestComplete™ is an automated software testing tool for creating, managing, and automatically executing tests for any Windows, Rich Client, or Web application. With its easy to use interface featuring script-free keyword-driven testing and an innovative Test Visualizer, TestComplete quickly gets new users automating their testing. TestComplete's impressive feature list and unmatched extensibility ensure power users always have a solution to testing challenges.

Key Features Of TestComplete

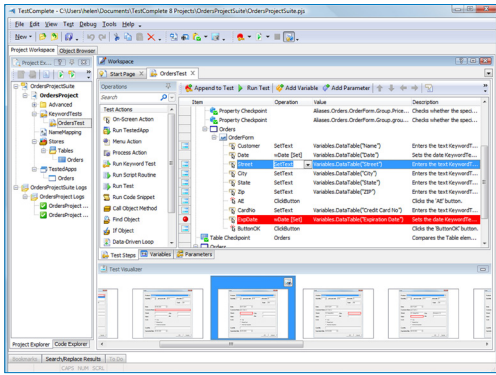
- ◆ Fully automated test recording from interactive usage of the application
- ◆ Keyword-driven testing using pre-defined validation steps to compose tests without scripts
- ◆ Test Visualizer for capture, display, and comparison of screenshots during recording and playback
- ◆ Data-driven tests using text, Excel, and database data sources
- ◆ Extensive set of checkpoints for common data types and objects
- ◆ Test scripting using your choice of several script languages
- ◆ Web & Rich Internet application testing with multi-browser support

TestComplete is the only functional testing tool you need.

It supports all Windows 32- and 64-bit application types, including .NET, WPF, WCF, Windows native, Java, Flash, Web, as well as many scripting languages. Designed for application developers and QA testers alike, TestComplete helps you perform comprehensive application testing, from the first line of code right through delivery and maintenance. Extensive capabilities for automatic regression testing and easy to deploy distributed testing ensure consistency in the validation cycle, whether you are doing Agile, iterative, Scrum, or any other flavor of application development and testing.

Automatic Test Recording and Playback

Functional test capture is as simple as starting up a TestComplete recorder and running your GUI application through a test use case. All mouse clicks, data entry, page transitions, and states or operations of internal application objects are automatically recorded in real time. TestComplete's



keyword tests, Wizard-based dialogs for data-driven tests, and a selection of built-in checkpoints help you efficiently create extensive and robust regression tests without writing a single script. Experienced users can automatically convert the recorded tests into any of five supported scripting languages and add their own test code.

The created tests can be re-played immediately via the TestComplete GUI, or batched to run on a schedule. Execute tests on one computer, or distribute them to run in parallel on a farm using TestExecute, or from automated builds or Quality Management frameworks, such as SmartBear ALMComplete™ or HP QualityCenter.

High-Level Automation for GUI Objects

TestComplete simplifies functional testing with built-in support for popular third-party visual components by Microsoft, Developer Express, Syncfusion, Infragistics, etc. TestComplete automatically maps high-level user actions to methods and properties of these components. Create custom mappings for one-off controls with the TestComplete SDK.

Web Application Testing

TestComplete provides a complete testing environment for Web applications under FireFox and Internet Explorer, and supports Web 2.0 and RIA technologies such as AJAX, Adobe Flex, Flash, and MS Silverlight.

Detailed Test Diagnostics

Detailed test logs generated by TestComplete include results of all test operations performed during the test, as well as screenshots of the tested application. Such details allow testers to quickly pinpoint causes of test failures and effectively communicate them across teams.

Test Management and Traceability

SmartBear offers a comprehensive and scalable test management solution for teams of all sizes, using QAComplete

and TestComplete together. Start with automated test execution and monitoring test status and extend the system to include manual testing and full traceability of requirements.

Supported Environments

- ◆ Microsoft® Windows (32-/64-bit): Windows 7, Windows Vista, Windows XP; Windows Server 2008 and 2003
- ◆ .NET Framework 2.0 - 4.0
- ◆ .NET compilers from Microsoft, Embarcadero®, and other vendors (C#, VB.NET, Delphi for .NET, Python .NET, COBOL .NET, Perl.NET, etc.)
- ◆ Windows native applications from Microsoft Visual Studio 6, 2002, 2003, 2005 SP1, 2008, 2010
- ◆ Borland® Delphi 7, C++Builder 6 – Embarcadero 2010
- ◆ JRE 1.5, 1.6
- ◆ Browsers: IE 6 – 9, Firefox 3.6 – 8, Chrome 16
- ◆ Web 2.0: AJAX, Adobe® Flash 9 and later, Flex 4.6 and later, AIR 3.0 and later, and Microsoft Silverlight 4
- ◆ Test scripting in VBScript, JScript, DelphiScript, C++Script or C#Script

Vibrant User Community

The TestComplete user community has tens of thousands of dedicated users. Our Community offers a wealth of information and networking opportunities that help new users get up to speed quickly and connect seasoned users who tackle specific testing challenges. An extensive library of documentation, application notes and How To's, technical articles, and on-demand Webcasts is complemented by our friendly and knowledgeable TestComplete support group to keep you up and running. Join in at www.smartbear.com/community/.

 **Try TestComplete Free for 30 Days**

Scan and download your free trial to see why testers choose SmartBear for automated testing.



About SmartBear Software

SmartBear Software provides enterprise-class yet affordable tools for development teams that care about software quality and performance. Our collaboration, performance profiling, and testing tools help more than 100,000 developers and testers build some of the best software applications and websites in the world. Our users can be found in small businesses, Fortune 100 companies, and government agencies. For more information about SmartBear Software, our award-winning tools, or to join our active user community, visit www.smartbear.com.

