

BRICK FACINGS

style with substance



BRICK FACINGS

style that lasts forever

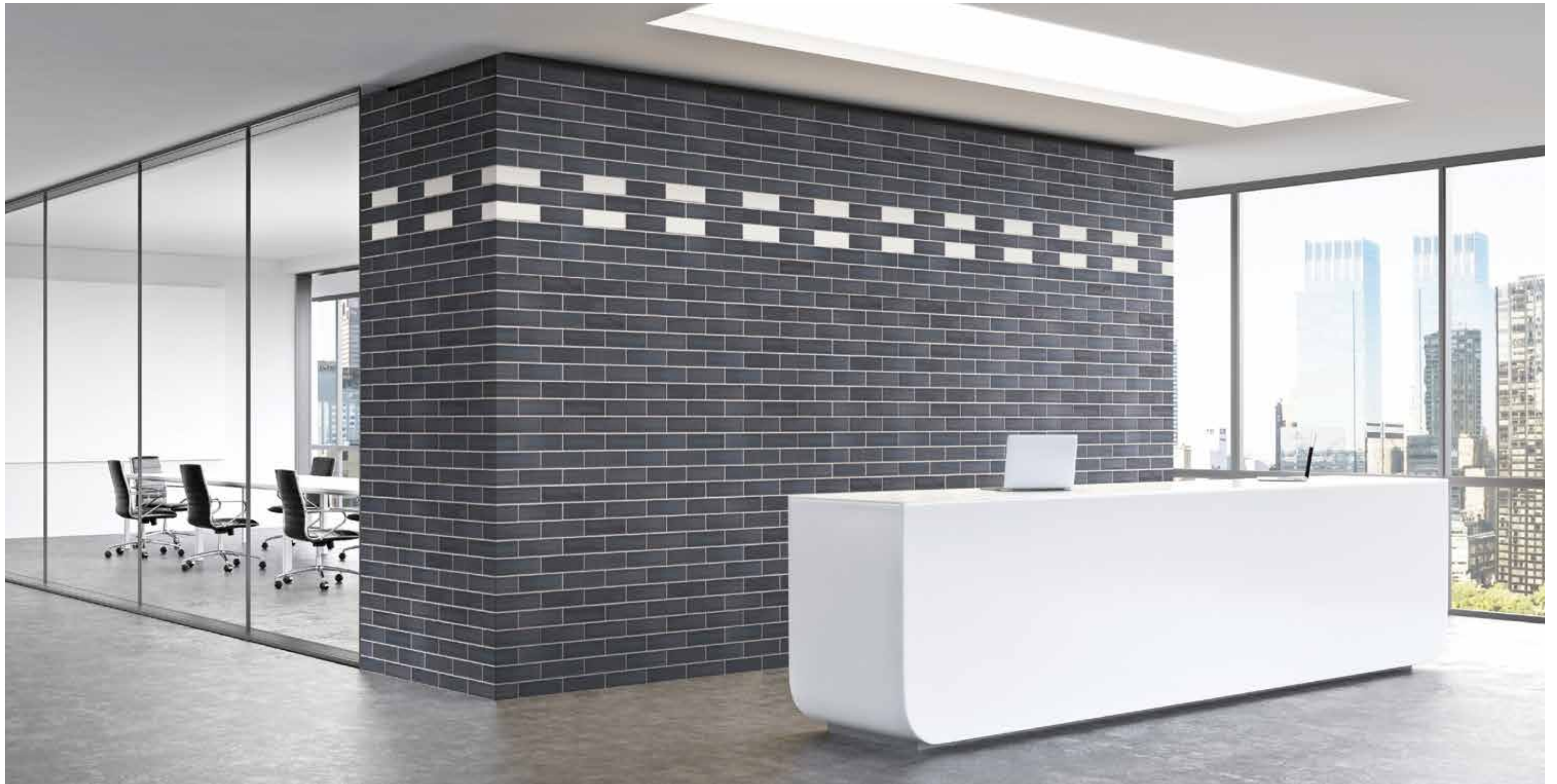
Recognised as one of Australia's leading manufacturers of quality clay building products, Austral Bricks continues to build its reputation for delivering top quality products.

We lead through style and product innovation, creating materials for beautiful environments, not just bricks. We understand that building a home is a unique personal expression and that the products you choose make a lasting statement about your style.

That's why our products offer beauty and style your way.



*This page: La Paloma Azul, Glazed White and Glazed Black
Cover: San Selmo Reclaimed*



La Paloma Gaudi and Miro



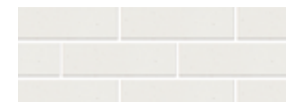
San Selmo Reclaimed



La Paloma Glazed White



La Paloma Glazed Black



La Paloma Miro



La Paloma Gaudi

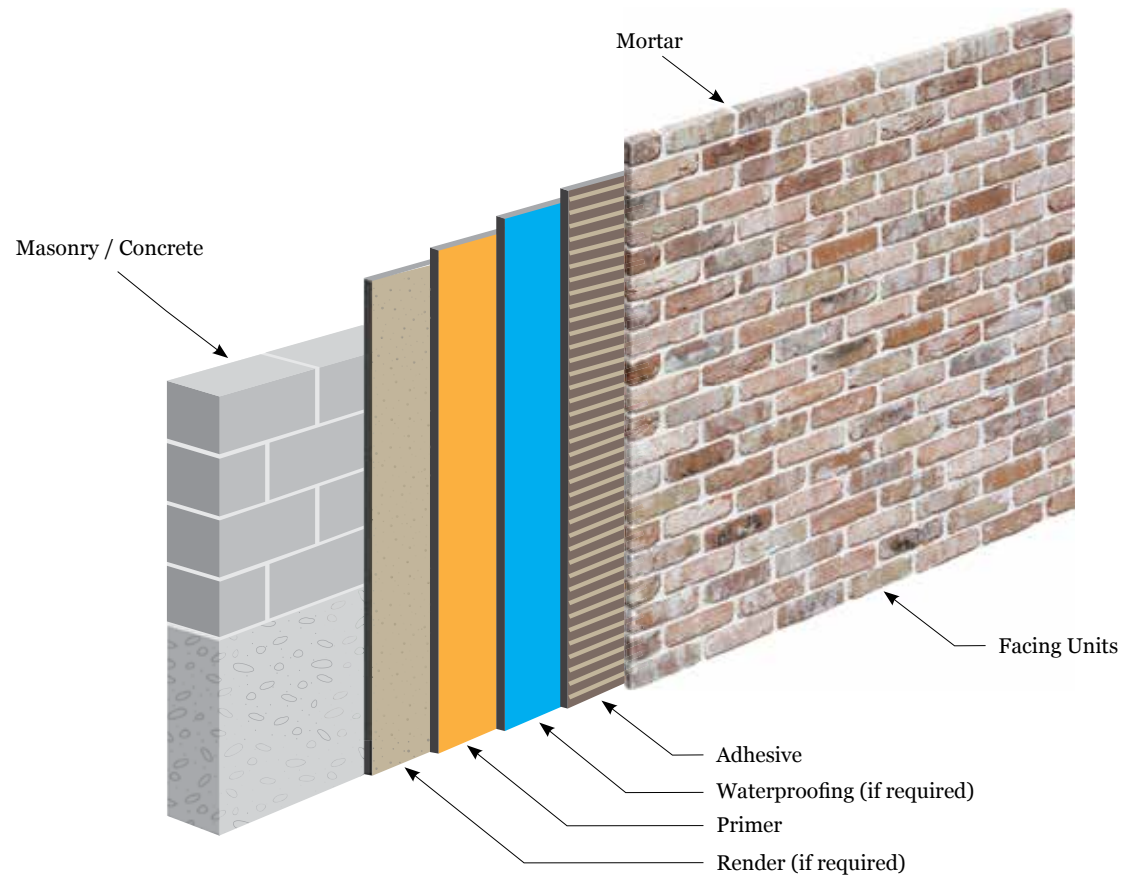


La Paloma Azul



BRICK FACING INSTALLATION GUIDE

Typical Installation Details



Preparation

- The back of the facing should be clean and free from loose particles with no forms of contamination evident
- The new or existing concrete substrate shall be fully dry and cured, cleaned, free from grease, oil, dirt, curing compounds, form release agents, loosely bound materials and all other surface contaminants by high pressure detergent water blasting followed by a thorough rinse with clean high pressure water to remove all signs of detergent. Allow the concrete to dry thoroughly prior to the commencement of tiling.
- The new or existing concrete blockwork must be clean and free from loose materials, dirt, oil, grease and all forms of contamination

- Remove any concrete sealers or curing compounds by mechanical means (eg: scabbing machine) from the surface

Limitations

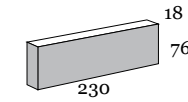
- Adhesive Fixing can only be used up to 3.5m in height, internally or externally
- Mechanical Fixing must be used where brick facings exceed 3.5m in height, internally or externally

Ardex Australia Pty Ltd products are recommended for installation up to 3.5m

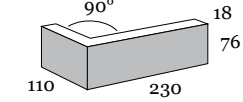
BRICK FACING INSTALLATION GUIDE

Dimensions

Facing Unit – 230 L x 76 H x 18mm Thick

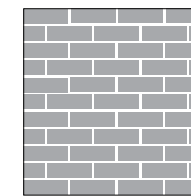


Corner Unit – 230 L x 76 H x 110 W x 18mm Thick

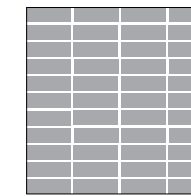


Laying Patterns

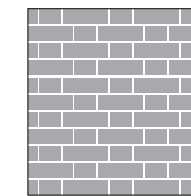
A bond refers to the pattern in which bricks are laid. The most common bond used is Stretcher Bond.



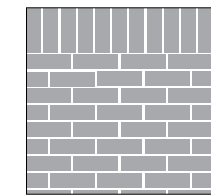
Stretcher Bond



Stack Bond



Flemish Bond



Soldier Course with Flemish Bond

Common Mortar Joints



Shallow Ironed (Rolled)



Deep Ironed (Rolled)



Struck Flush



Weather Struck



Raked

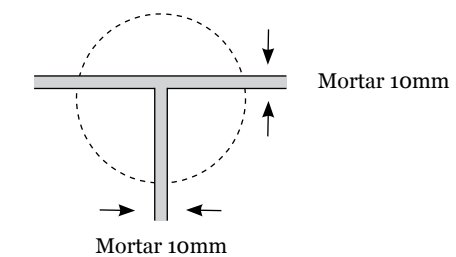


Beaded Pointing



Tuck Pointing

Mortar Thickness





brickworksbuildingproducts.com.au | 13-brick

follow brickworks building products on



CAMPBELLFIELD: 1596 Sydney Rd
GREENSBOROUGH: 297 Diamond Creek Rd
MORDIALLOC: 80 Governor Rd
TAYLORS LAKES: 31A Melton Hwy

Ph: 9359-6028 Fax: 9359-6911
Ph: 9434-6744 Fax: 9434-6455
Ph: 9580-1080 Fax: 9580-1732
PH: 9390-8100 Fax: 9390-9180

DESIGN STUDIOS

Sydney CBD

Ground Floor
50 Carrington
Street, Sydney
NSW 2000

Melbourne

490 Swan Street
Richmond
VIC 3121

Adelaide

Ground Floor
70 Hindmarsh
Square, Adelaide
SA 5000

Brisbane

27 James Street
Fortitude Valley
QLD 4006

Perth

67 King Street
Perth
WA 6000

Hobart

9 Franklin Wharf
Hobart
TAS 7000

Austral Bricks is part of the Brickworks Group

The product images in our brochures give a general indication of colour for your preliminary selection.
We also recommend you view current product samples before making your final decision.