

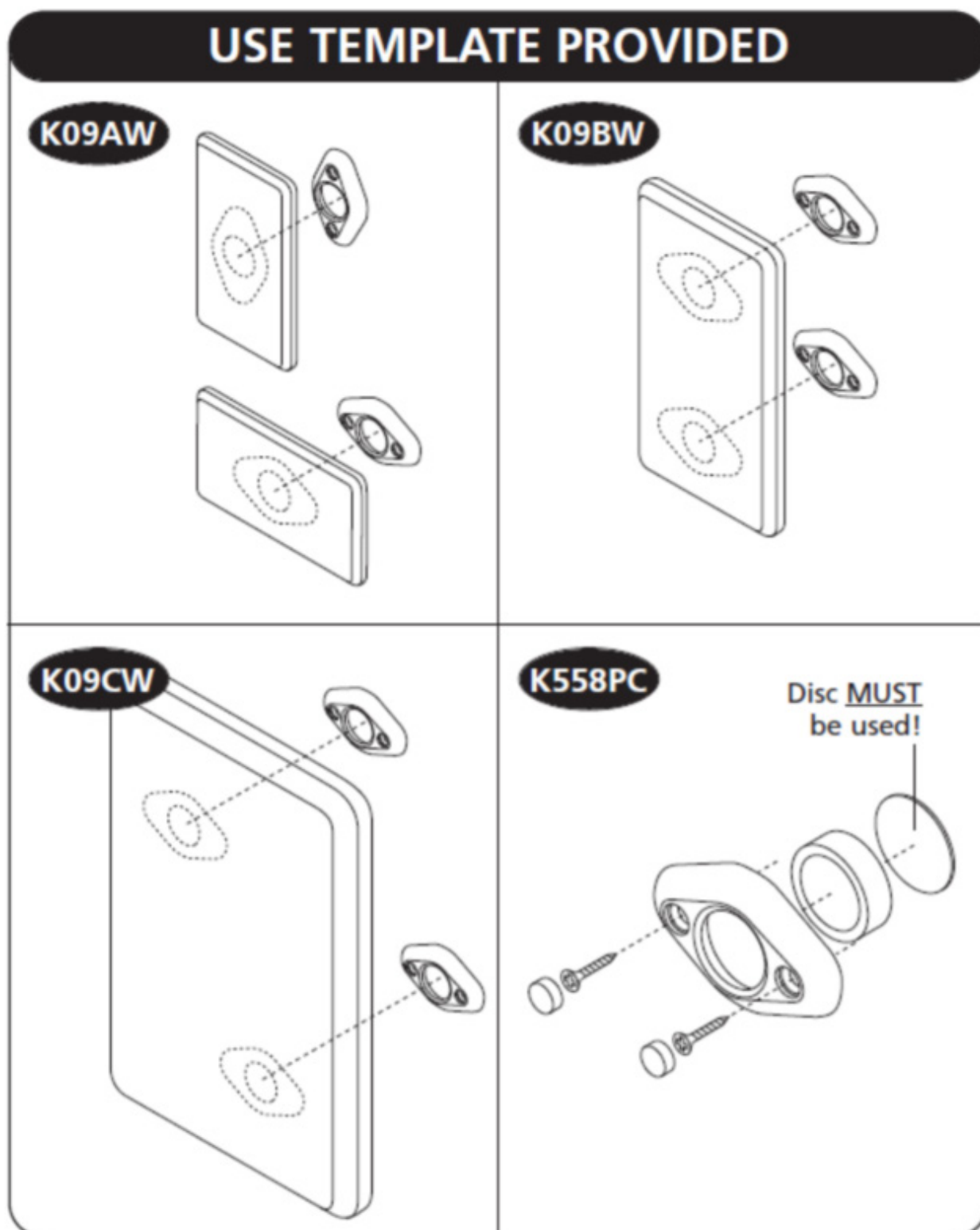


Load Release Mounting Plates 111735

Fitting Instructions

K09 Back Plates

Fig. 1





FITTING INSTRUCTIONS

1. Using the template provided, mark all fixing points ensuring there will be no obstructions preventing correct release of product.
2. Fix brackets. It is important that the two brackets are securely fixed to the substrate using TWO fixing screws and care must be taken to ensure that no ligature points are left once installation has been completed. The packing disc must be used behind magnet as per diagram.
3. Once bracket positioning has been confirmed by testing, the push in screw cover **MUST** be fitted ensuring that it is flushed with the bracket body. The push in screw cover is intended to be tight fit to prevent unauthorised access to fixings

FITTING ACCESSORIES TO BACK PLATE

1. Drill pilot holes to suit accessories
2. Fix accessories to back plate ensuring screws do not protrude through plate or conflict with brackets behind plate

ALL BRACKETS

Discs should be horizontal and centre of gravity of load should be directly beneath centre-line of discs. Test completed installation. The downward force needed to part the brackets should never be more than 400N (40kg static load) at any point.

WARNING

The magnetic element of the Kestrel bracket is **POWERFUL**. Handle with care. If allowed to attach to a flat steel surface it may be difficult to remove. **DO NOT PLACE NEAR SENSITIVE ELECTRONIC EQUIPMENT.**



ABOUT HIPAC

We are an Australian healthcare company that guarantees to stand behind all our medical products, both manufactured and imported, because we're here for the life of our products and clients.

PO Box 797, 36 Long St. Goulburn NSW 2580, Australia
P. +61 2 4823 0000 E. info@hipac.com.au

SYDNEY | MELBOURNE | BRISBANE | ADELAIDE | PERTH

hipac.com.au

ABN 27 600 353 688