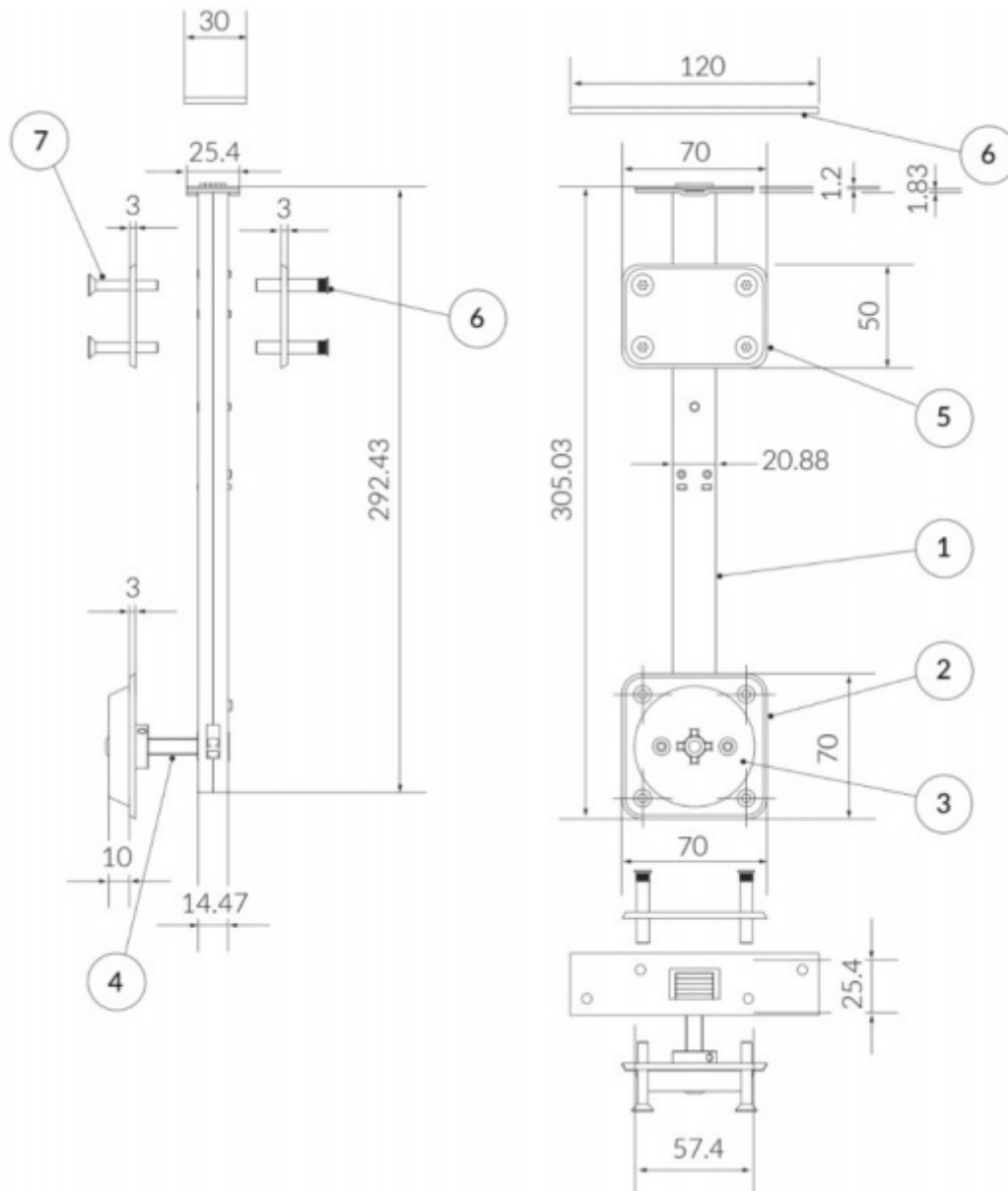




Rhino Mortice Bolt with Reinforcement Kit

Datasheet



Parts List

Item	QTY	Part Number	Description
1	1	B200905	Tubular Mortice Bolt Extended Throw (including face plate)
2	1	B500142	70 x 70mm XT Escutcheon Plate
3	1	B310501	LifeLine Assembly for Lockset
4	1	B200707	XT Spindle c-w Grub Screw
5	2	B500141	70 x 50mm TMB Reinforcing Plate BB
6	4	B100231	M4 x 35 Plain head c/sunk knurled barrel nut
7	4	B100103	M4 x 30 6 lobe pin c/sunk mach screw
8	1	B200602	Strike Plate for TMB 1200mm x 30mm



Rhino Mortice Bolt with Reinforcement Kit

Datasheet

Material

Life-Line Mechanism: Die-cast Mazak 5 handle. Electro-plated SSS finish.

Backplate & Reinforcing kit: 3mm Chamfered mild steel. Electro-plated SSS finish.

Deadlock: Predominantly manufactured from steel.

Fixings

6 lobe pin-torx anti-tamper stainless steel security screws.

Maintenance

Lubrication: RS High Performance Dry Lubricant, RS 251-3794

Cleaning: Proprietary baby oil and soft cloth.

Standards

Item	Part Number	Primera Code	DHF T001:2013
1	B310501	LL-Assembly	PASSED A4

Certifications

CE: Lockcase:	BS/EN 12209:2013	[British Standards Institute]
Fire Testing:	BS/EN 1634-1	[Exova Warrington Fire]

ABOUT HIPAC

We are an Australian healthcare company that guarantees to stand behind all our medical products, both manufactured and imported, because we're here for the life of our products and clients.

PO Box 797, 36 Long St. Goulburn NSW 2580, Australia
P. +61 2 4823 0000 E. info@hipac.com.au

SYDNEY | MELBOURNE | BRISBANE | ADELAIDE | PERTH

hipac.com.au

ABN 27 600 353 688