



FORMWORK ▶ CONCRETE ▶ STEEL

▶ www.kennyconstructions.com.au

Sydney | Brisbane | Adelaide | Darwin



A dynamic, mid-tier contractor with a proven track record of offering strategic solutions to projects of high complexity. We specialise in working on deadline driven projects of high commercial value. Our reputation has been built on the success of the projects we have been integral in constructing. Through this we have developed extensive experience in delivering unique, complex projects.

OUR ACCREDITATIONS



CONSTRUCTION SERVICES

We have a strong expertise in the supply and install of formwork, placing and finishing of concrete, all elements of steel-fixing; tie in situ, pre-fab and erection, with use of our mobiles cranes, telescopic loaders and bob-cats.

EXPERTISE

- **FORMWORK:** Supply and Install
- **CONCRETE:** Place and Finish
- **STEEL FIXING:** Pre-Fab, Tie In Situ, Erection
- **ACCESS:** Mobile Cranes, Telescopic Loaders, Bob-Cats

PERSONNEL

- Project Managers
- Engineers
- OH&S Managers
- Supervisors
- Formworkers
- Concreters
- Steel-fixers
- Dogmen & Riggers
- Welders
- Plumbers
- Electricians

▶ www.kennyconstructions.com.au



With a proven track record of delivery, we have continually been contracted on some of the largest civil infrastructure jobs in Australia;



TRANSCITY

northwestraillink



Eastern Busway
Buranda to Main Avenue



▶ www.kennyconstructions.com.au



Our reputation has been built on the success of the projects we have been integral in helping to build. As a direct result of this we have developed lasting client relationships throughout the civil, construction and mining industries.

OUR WORKING BUSINESS PARTNERS



► www.kennyconstructions.com.au

Kenny Constructions prides itself in having a “Can Do” attitude and can help save time in regard to project documentation, scheduling and planning. We have the ability to ramp up and down production with short notice to meet project demands.

► **LEGACY WAY PROJECT, BRISBANE, QLD**

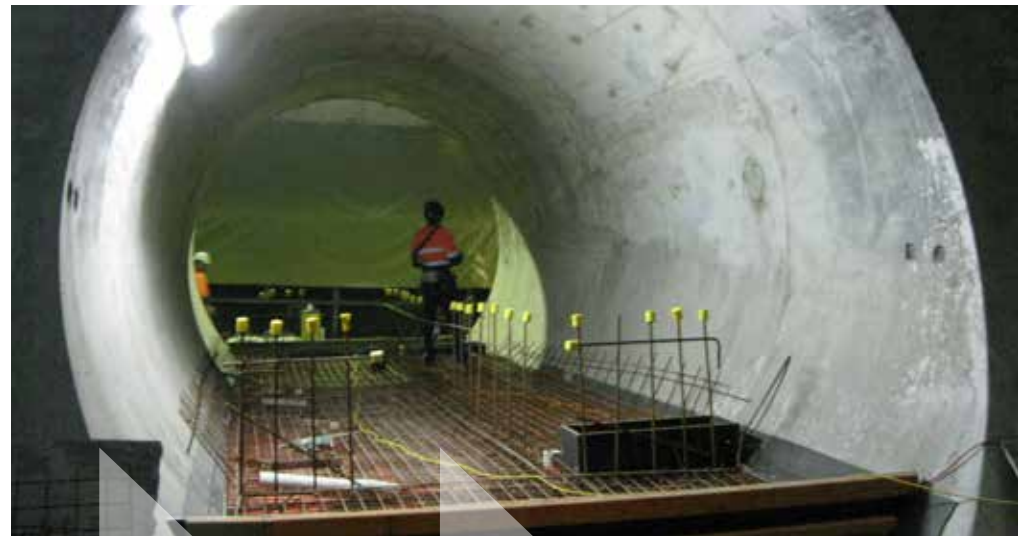
CURRENT

The project comprises of twin two-lane tunnels, approximately 4.6km in length, which will run between tunnel portals located in Toowong (western end) and Kelvin Grove (eastern end).

Transcity, the JV Contractor, has been selected to design, build and operate Legacy Way. Construction on the project is expected to take four years and be completed in 2015. Transcity is an integrated team comprising BMD Constructions, Italian company Ghella and Spanish construction company Acciona. This team will be supported by a number of locally based specialist companies such as Kenny Constructions to provide the skills and knowledge required to deliver the Legacy Way project.

Kenny Constructions Scope of Works

Concrete works to TBM Tunnel, Smoke Duct Support Corbels
Cross Passage Permanent Lining – 47 no Cross Passages
Substation Permanent Lining – 10 no Substations
Low Point Sump Permanent Lining



As a result of our experience and proven track record with complex and remote projects, along with our systematic approach to project management, we believe that we will add value to any project.

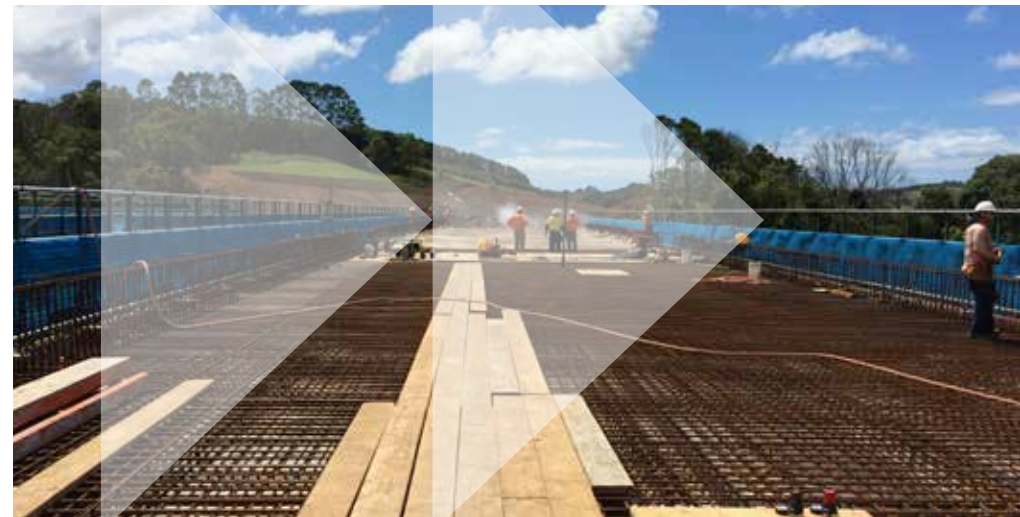
► **TINTENBAR TO EWINGSDALE UPGRADE - PACIFIC HIGHWAY, BALLINA, NSW**

CURRENT

The Tintenbar to Ewingsdale upgrade of the Pacific Highway is an important part of the RMS's Pacific Highway Upgrade Program. The length of the upgrade is 16.3 km, starting at Ross Lane in Tintenbar and extending north to the existing Ewingsdale interchange, near the settlement of Ewingsdale.

Kenny Constructions Scope of Works

Kenny Constructions has been contracted by Baulderstone Pty Ltd to construct a bridge and two water retention structures as part of the State and Federal Government funded upgrade of the Tintenbar to Ewingsdale Upgrade Project (T2E) on the Pacific Highway of NSW. The bridge structure in which Kenny Constructions has been engaged to build is the largest bridge on the entire project consisting of a seven span dual carriage way twin bridge spanning over Byron Creek near the township of Bangalow. The two tank structures, being a Deluge and Holding Tank are for fire suppression in the event of a fire within the tunnel structure are being built under the existing St Helena Rd just south of the Byron Bay exit .



Kenny Constructions have shown the capability to construct complex projects of considerable scope. We have accomplished this without incident, whilst maintaining the highest standards.

► **TINTENBAR TO EWINGSDALE UPGRADE
- PACIFIC HIGHWAY, BALLINA, NSW**

CURRENT

TYPE OF CONTRACT: Design and Construct

The Tintenbar to Ewingsdale Upgrade of the Pacific Highway is an important part of the RMS's Pacific Highway Upgrade Program.

The St Helena Tunnel is a twin-tube road tunnel under St Helena Hill located near the suburb of Ewingsdale, NSW. The tunnel is part of the Tintenbar to Ewingsdale project on the Pacific Highway and is located on a new alignment. The tunnel is being built to avoid the steep grades of St Helena Hill and concomitant heavy truck noise and pollution. It is to be approximately 340 m (1,120 ft.) long and 45 m below the 131 metre high ridge line. The tunnel will comprise two road tunnels, one southbound and one northbound, each with two traffic lanes.

Kenny Constructions has been contracted by Boulderstone Pty Ltd to undertake Tunnel Formwork and Concrete Works as part of Tunneling Works on the Tintenbar to Ewingsdale Upgrade Project (T2E) on the Pacific Highway of NSW.



Our Quality Assured IMS ensures that we can deliver complex projects safely and on time to our client's expectations and as a consequence of our IMS System we have been awarded RMS prequalification.

► **PRINCES HIGHWAY, GERRINGONG UPGRADE**
KIAMA, NSW CURRENT

Roads and Maritime Services (RMS) is upgrading the Princes Highway between Mount Pleasant and Toolijooa Road. This work is funded by the NSW Government. The \$349 million upgrade will provide 7.5 kilometres of upgraded highway and two new interchanges with access to Gerringong and Gerroa. RMS has contracted Fulton Hogan to design and construct the Gerringong Upgrade. Construction has started with completion expected in mid-2015, weather permitting.

Kenny Constructions Scope of Works

Kenny Constructions has been contracted by Fulton Hogan to construct a number of bridges on the Gerringong Upgrade in particular the formwork, steel fixing and concreting elements. Kenny Constructions are prequalified to work with Roads and Maritime and their contractors on such projects. Kenny Constructions work collaboratively to deliver on the requirements of Roads and Maritime and Fulton Hogan. Kenny Constructions are also ISO Accredited and through our integrated management system, we are working well in meeting the requirement of the project management systems and in particular quality, environmental and OH&S. Kenny Constructions experience in main roads projects and in particular our experience on previous Roads and Maritime projects add value to the project.



Backed by our strong technical capabilities and practical experience we have expanded over the years to become a multi-state company involved in various sectors across the construction, civil and mining industries.

▶ **AIRPORT LINK, BRISBANE, QLD** 2010 - 2012

The Airport Link is a \$4.8 billion toll road, Australia's largest ever road infrastructure project, linking Brisbane's CBD to the airport. The Thiess and John Holland Group Joint Venture (TJHJV) have undertaken the design and construction of the Airport Link.

Kenny Constructions Scope of Works

▶ **Bowen Hills Surface Works**

F&P of over 12,000m² of in-situ decks, drop beams and up stands.

▶ **Southern Mined Tunnels (Bowen Hills to Lutwyche)**

F&P of 25 mined tunnel cross passages

FRP of 4.2km of suspended smoke duct slab

FRP of in excess of 3000 smoke duct hanger columns

F&P of 18 pairs of tunnel lining transitions and 4 tunnel lining niches

F&P of 240m of burial chamber walls & 3 tunnel headwalls

▶ **Toombul TBM Tunnel (Toombul to Lutwyche)**

FRP of 17 TBM tunnel cross passages

FRP of in excess of 2500 smoke duct hanger columns

▶ **Central Mined Tunnel (Kedron)**

FRP of in excess 8000m² of conventionally formed suspended smoke duct slab & 600 smoke duct hanger columns

▶ **Northern Busway**

FRP of in-situ barriers and suspended LEP slabs



Through our Integrated Management System and our Approved Quality Assurance Accreditation, Kenny Constructions sets itself apart from other FRP Contractor in our ability to project manage a project successfully especially remote projects through our remote server IMS system that our site and office staff have complete access to.

► **URBAN SUPERWAY – ADELAIDE, SA** 2012 to 2014

The Urban Superway Project is a Joint Venture between John Holland, Macmahon Contractors and Leed Engineering and Construction Pty Ltd. The project involves the construction of the \$812 million South Road Superway project which is the biggest single investment in a South Australian road project. This is also the state's most complex engineering road construction project to date.

The Urban Superway will deliver a 4.8 kilometre non-stop highway corridor, comprising of a 2.8 kilometres of elevated roadway, connecting the Port River Expressway to Regency Road, north of Adelaide. This project will reduce traffic congestion and travel time at major road and rail intersections along the corridor, and deliver local road improvements throughout the suburbs of Wingfield, Regency Park and Angle Park.

Kenny Constructions Scope of Works

- F&P of Main Southern Abutment
- F&P of over 65 Pile Cap Foundations in excess of 15,000 m³ of concrete
- F&P of one sided walls



17a, 287 Victoria Road,
Rydalmere,
NSW, 2116

Suite 23, Level 2,
1 – 7 Jordan St,
Gladesville,
NSW, 2111

Ph: 0455 123 005

Ph: 02 9817 6622

Fax: 02 9817 7382

- ▶ www.kennyconstructions.com.au
- ▶ info@kennyconstructions.com.au



FORMWORK ▶ CONCRETE ▶ STEEL

▶ www.kennyconstructions.com.au
Sydney | Brisbane | Adelaide | Darwin

