

ROSTREVOR COLLEGE INDIGENOUS ARTWORK DESIGN



DESIGNED BY
**SHANE COOK IN COLLABORATION
WITH ROSTREVOR INDIGENOUS STUDENTS**

IN THE BACKGROUND OF THE ARTWORK, STUDENTS HAVE INCLUDED A MEETING PLACE. IT SYMBOLISES THE COLLEGE AT THE CENTRE OF OUR COMMUNITY. THE DOTS AROUND THE MEETING PLACE REPRESENT THE INDIVIDUALS THAT ARE PART OF THE WIDER ROSTREVOR COMMUNITY. IT PAYS RESPECT TO STUDENTS AND FAMILIES - PAST, PRESENT AND FUTURE.



THE THREE BOOMERANGS ARE A SIGNIFICANT REPRESENTATION OF OUR CULTURAL ENDURANCE AND ARE LINKED TO OUR PAST, DATING BACK 60,000 YEARS. BOOMERANGS WERE SPECIALISED THROWING TOOLS, DESIGNED TO STRIKE THE TARGET AND FALL TO THE GROUND, THEY FEATURE ON OUR CHEST AS A SYMBOL OF STRENGTH AS WE TAKE ON OUR OPPOSITION.

IN THE CENTRE OF EACH OF THE BOOMERANGS STANDS THE GUMTREES - REPRESENTED BY MEETING PLACES. THESE TREES ARE LOCATED IN THE VALLEY AT ROSTREVOR - THE HEART OF THE COLLEGE. FROM THE OVAL, THEY CAN BE SEEN TO BE STANDING IN A LINE, REPRESENTED BY THE SYMMETRY OF THE BOOMERANGS ON THE ARTWORK. THEY ARE LARGE AND STRONG, WITH ROOTS THAT REACH DEEP INTO THE GROUND, GIVING US STRENGTH.

ON EACH OF THE BOOMERANGS, STUDENTS HAVE INCLUDED THEIR OWN STORIES IN THE FORM OF TRACKS. THE TRACKS REPRESENT THE JOURNEYS OF WHERE THEY HAVE COME FROM, WHERE THEY ARE GOING, MEETING PLACES THAT ARE REPRESENTATIVE OF THEIR FAMILIES, WHO THEY BELONG TO, AND THE TRACKS THAT THEY MAKE ON THE EARTH AS THEY CONTINUE ON THEIR JOURNEYS.

AROUND EACH OF THE BOOMERANGS ARE DOTS TO REPRESENT PEOPLE THAT ARE PRESENT WITHIN OUR LIVES AND WHO REMAIN BY OUR SIDE.

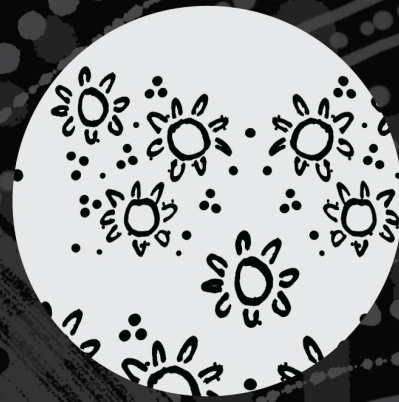
THE RED CIRCLE LINES ACROSS THE BOTTOM OF THE ARTWORK REPRESENT EACH OF OUR INDIGENOUS BOYS' STORIES - THE LINES AND DIRECTION WERE INDIVIDUALLY DRAWN BY EACH OF THE STUDENTS AND REPLICATED ON THE ARTWORK.



ROSTREVOR COLLEGE
INDIGENOUS ARTWORK DESIGN



DESIGNED BY
**SHANE COOK IN COLLABORATION
WITH ROSTREVOR INDIGENOUS STUDENTS**



MEETING PLACES ARE REPRESENTED ACROSS THE ARTWORK - REPRESENTING OUR STUDENTS, TEACHERS AND COMMUNITY MEMBERS WHO MEET TO SHARE STORIES, CULTURE, HISTORY, IDEAS, LEARNINGS, AND ASPIRATIONS.

THE ABORIGINAL FLAG IS A PROMINENT FEATURE ON THE ARTWORK DESIGN. IT REPRESENTS STRENGTH, COURAGE AND CONNECTION WITH THE LAND. THE TOP HALF OF THE FLAG IS BLACK TO SYMBOLISE ABORIGINAL PEOPLE. THE RED IN THE LOWER HALF REPRESENTS THE EARTH AND THE COLOUR OF OCHRE, WHICH HAS CEREMONIAL SIGNIFICANCE. THE CIRCLE OF YELLOW IN THE CENTRE OF THE FLAG REPRESENTS THE SUN - THE GIVER OF LIFE.



THE TRACKS THAT ARE INCLUDED IN THE DESIGN REPRESENT OUR INDIVIDUAL JOURNEYS. THEY INTERSECT AND WALK ALONGSIDE EACH OTHER THROUGHOUT THE DESIGN. AS A COMMUNITY, WE ARE ALL ON DIFFERENT JOURNEYS, BUT AT THE CENTRE OF IT ALL, IS OUR COLLEGE.

THE SILHOUETTE FIGURE ON THE BACK IS ELKIN REILLY; AN INDIGENOUS MAN THAT ATTENDED ROSTREVOR COLLEGE IN THE 1950S AND PLAYED AUSTRALIAN RULES FOOTBALL FOR SOUTH MELBOURNE AND SYDNEY SWANS. THE STUDENTS FELT IT WAS IMPORTANT TO PAY RESPECT TO SUCH A PROMINENT FIGURE AND INCLUDE HIM AS A REPRESENTATION OF WHERE WE HAVE COME FROM, AND A WAY TO REMEMBER HOW WE CAN BE A SIGNIFICANT SIGN OF STRENGTH FOR OUR COMMUNITY.

