



# Uniform

Guide and Expectations

v3-24

GLEESON



WITH ONE HEART

# College Uniform

---

The College Uniform may be worn throughout the year. The blazer must be worn as the outer garment to and from school in Terms 2-3, as well as for special occasions such as assemblies or concerts.

## Top

White long-sleeved shirt with Gleeson logo (tucked in)



## Bottom Option 1

- Charcoal College pant: two styles available (straight leg or tapered)
- Grey-maroon-white striped socks



## Bottom Option 2

- College skirt, worn to the knee
- Grey-maroon-white striped socks  
OR grey tights (tights not pictured)



Optional: College knitted jumper and College scarf





**Blazer**

College blazer  
(with white piping)



**Shoes**

Plain black leather  
traditional school shoes



**Tie**

College tie



**Belt**

Plain black or charcoal with plain buckle

**Backpack**

College backpack





# Summer Alternative Uniform

---

These uniform items may be worn during Terms 1 and 4 in place of the College Uniform. Please note a hat is compulsory for any and all outdoor activities in these terms. The blazer and tie are only required for designated formal events in Terms 1 and 4.

## Top Option

White short-sleeved shirt with College logo: two styles available (loose or fitted)



## Bottom Option

- Charcoal college shorts: two styles available (straight leg or tapered)
- Grey-maroon-white striped socks



## Top & Bottom Option

- College dress, worn to the knee
- White-maroon knee-high socks



Optional: College knitted jumper and College Blazer



### ***Slip Slap Slap!***

Students must wear a hat for any and all outdoor activities in Terms 1 and 4.

Sunblock is provided by the College.



# Sport Uniform

---

The College Sport Uniform is to be worn strictly only on days students have practical PE lessons. Medical appointments, before- or after-school trainings, part-time work are all not acceptable reasons to be in the sport uniform. The Leadership Team or House Leadership Team may allow the sport uniform (eg with House Polo) for certain events or celebrations.

## *Shoes and Socks*

Gleeson monogrammed white ankle socks.

Plain joggers are required - *no* volleys or canvas shoes.



## Hat

College cap or bucket hat is compulsory in Terms 1 and 4.



Current cap:



Previous style cap:  
(no longer in production,  
may still be worn)



## Top

Gleeson grey/maroon/white polo.  
Students will receive a House Polo for designated days and events from the College.



## Bottom

College maroon PE short\* (worn to knee) or College trackpant.



\*short comes in regular or fitted style



Optional: Gleeson track jacket (above right) or new sports jumper (below)



## Specialist Sports Programs

Netball and World Football students have a separate uniform for their practical lessons, which they change into at school.

# Personal Presentation

---



**Hair styling is part of the Gleeson College uniform and must be kept in a clean, neat and tidy manner at all times.**

**Facial hair is not permitted.**

Hair longer than the collar or that has the potential to fall across the eyes must be restrained with a simple black, grey, maroon or white hair tie or ribbon.

Hair with significant differences in length (such as mullets, mohawks, skullcuts, V-cuts, fades) or with lines or symbols cut into the hair are *not* permitted.

**Artificially coloured hair** other than in natural colour is not permitted; this includes brightly coloured streaks or highlights and obvious variations in colour which draw attention.

Items used to restrain hair must be maroon, grey, brown or black and accessories such as flowers, feathers, 'scrunchies' and wide headbands/bandannas are not permitted.

Hair extensions, including eyelash extensions, are not permitted.

### **Jewellery and Piercings**

A fine silver or gold chain that bears a Christian religious symbol may be worn and one simple ring on each hand is permitted. A student with **pierced ears** may wear only two simple gold or silver studs or sleepers in any part of each ear. **No other visible piercings** or clear coverings of piercings are permitted. This includes piercing of the tongue, lip, brow or nose.

### **Nails**

Fingernails are to be short, and nail polish and false fingernails are not permitted.

Acrylic nails are *not* permitted.

### **Makeup and Body Art / Tattoos**

Light, natural tones only. Obvious make-up, such as foundation, lipstick, eye shadow, mascara/eyeliner and stencilled eyebrows, are *not* permitted. Body Art and tattoos are *not* permitted.



# Sourcing Uniforms

---

Families may purchase uniform items from our supplier, Devon Clothing, at their Clovercrest Store. Visit their website [www.devonclothing.com.au](http://www.devonclothing.com.au) for current trading hours, stocklists and appointment times. Devon Clothing also offer an online shop with free click and collect facilities. We highly recommend placing uniform orders early to help our supplier manage their stock levels, and to allow for any minor adjustments which may be necessary. Please note when having items re-sized, *skirts, dresses and shorts are all required to be worn to the knee.*

The logo for Devon Clothing is a dark blue shield-shaped emblem with a white dashed border. Inside the shield, the word "DEVON" is written in a white, serif font within a white oval. Below the oval, the words "DEVON CLOTHING" are written in a smaller, white, sans-serif font.

Devon Clothing Modbury  
Shop 24, Clovercrest Plaza  
429 Montague Rd, Modbury 5092  
[modcus@devonclothing.com.au](mailto:modcus@devonclothing.com.au)  
08 8350 7930

 [FACEBOOK.COM/DEVONCLOTHINGAUS/](https://www.facebook.com/devonclothingaus/)

***Uniforms slowly teach our young people one of life's most important lessons: that what really counts is what you are and what you can become on the inside, not what you are wearing on the outside.***

Bill Clinton

### ***Pre-Loved Uniforms***

We have a College Secondhand Uniform Facebook Group which can be accessed at [www.facebook.com/groups/gleesoncollegeuniform](https://www.facebook.com/groups/gleesoncollegeuniform) (please ensure items are the current style). We also have a small supply of items donated each year: please contact the College Front Office to enquire.



#### **Future Families**

transition@gleeson.catholic.edu.au

#### **Current Families**

Your child's Care Group teacher or House Leader.

# Discontinued Items

---

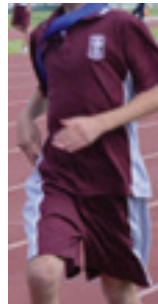
Please note the below items are long since discontinued, and may not be worn from the end of Term 3 2024. Families are welcome to return discontinued items to the College for donation to communities in need overseas.



Blazer with old logo and no piping



Old cap and track jacket



Old PE uniform



Old tracksuit pant

***The uniform makes for brotherhood, since when universally adopted it covers up all differences of class and country.*** ”

Lieutenant Robert Baden-Powell



### ***a quick note...***

This booklet serves as a pictorial guide to the official College Uniform Policy, which contains further elaborations on many items discussed within this guide. This policy is reviewed every three years by the College Leadership Team in consultation with our parent and student body.



40-60 Surrey Farm Drive, Golden Grove SA 5125 [Kaurna Country] | 8282 6600

[info@gleeson.catholic.edu.au](mailto:info@gleeson.catholic.edu.au) | [gleeson.sa.edu.au](http://gleeson.sa.edu.au)