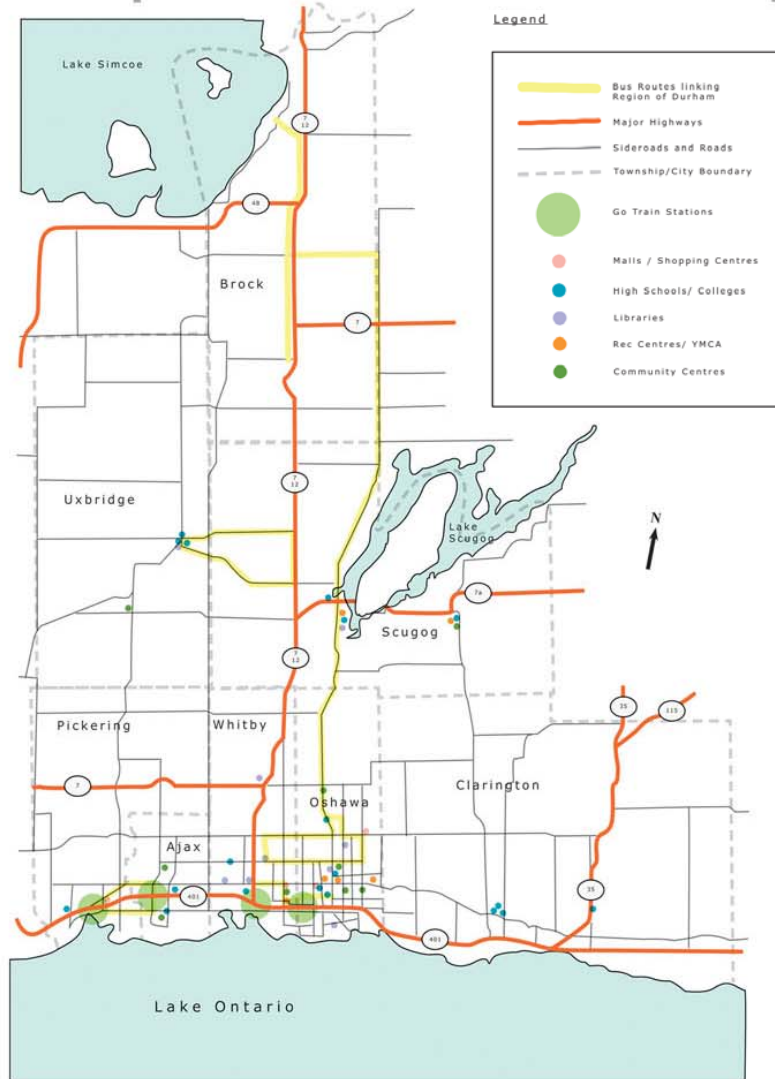
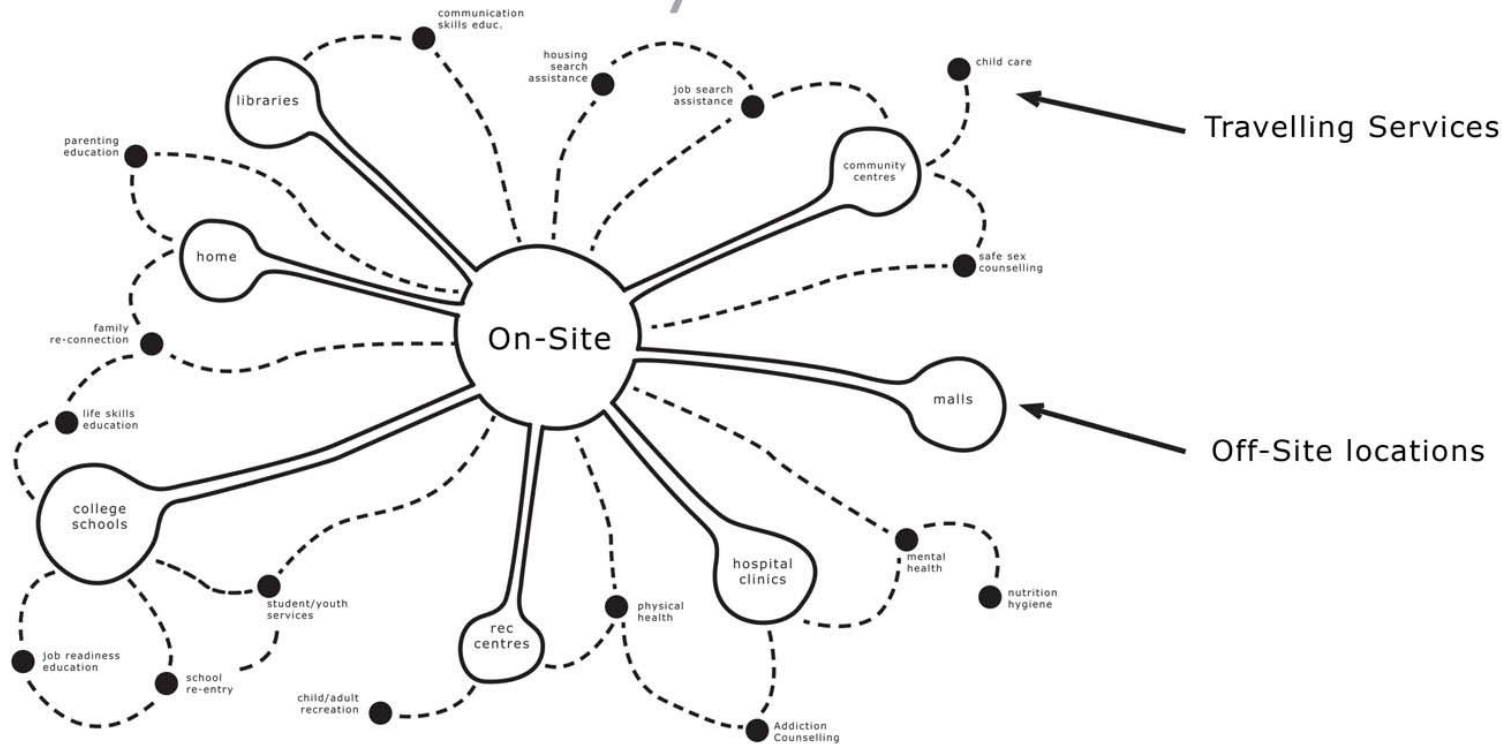


# Map of Durham Region



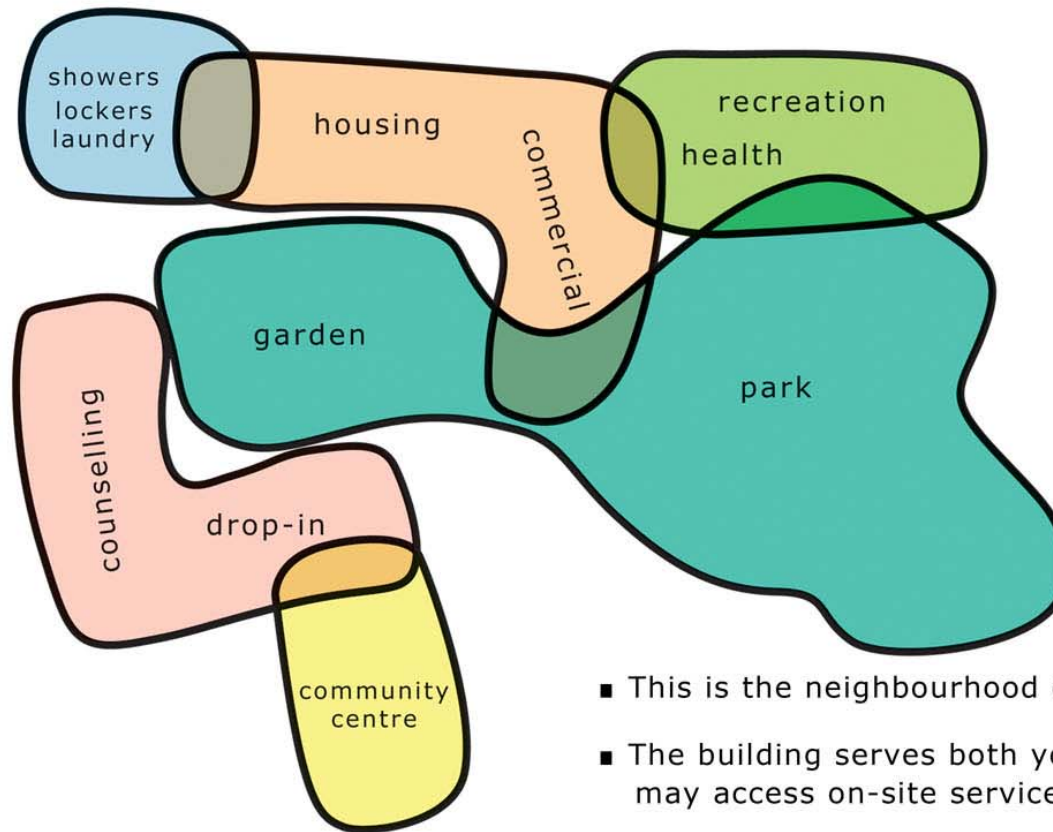
- This map shows the extent of Durham Region. It is a tool for deciding where to locate the DYHSS program and adjunct services.
- It shows the link of existing and new services and facilities in the entire region.
- The services include; transit, highways, go-train stations, community centres, libraries, hospitals, schools, rec-centres and malls.

# DYHSS Community



- DYHSS community consists of On-Site and Off-Site locations as well as Travelling Services.
- DYHSS has their own staff as well as staff they will share with existing services in the region. In addition, some programs may utilize staff from existing service providers.
- Youth will be able to use services throughout the entire region.

# The Local Neighbourhood



- This is the neighbourhood of the main DYHSS facility.
- The building serves both youth who live here, youth who may access on-site service, and youth in the neighbourhood.
- The neighbourhood will have access to DYHSS services and DYHSS will provide services back to the community.
- The building needs easy access to other services like; rec centres, parks, community centres, child care, restaurants, libraries, schools and malls.

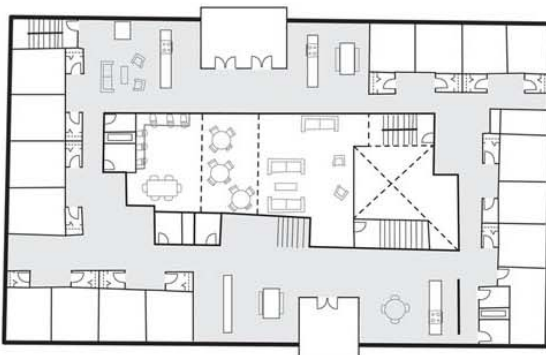
# Diversity of Residential Living

- The residential living can be organized into a mixture of independent and communal living arrangements.
- These arrangements are based on individual needs and length of stay.
- The diversity ranges from individual rooms (some acting like small apartments) to shared apartments and shared floor arrangements.

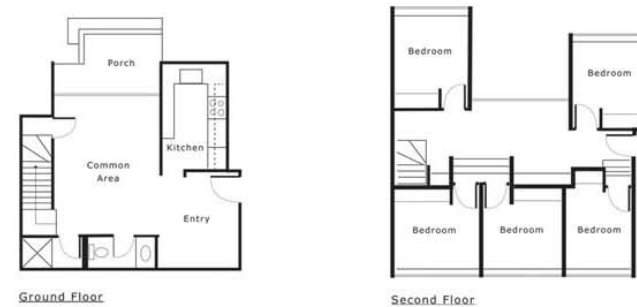
## Single Person



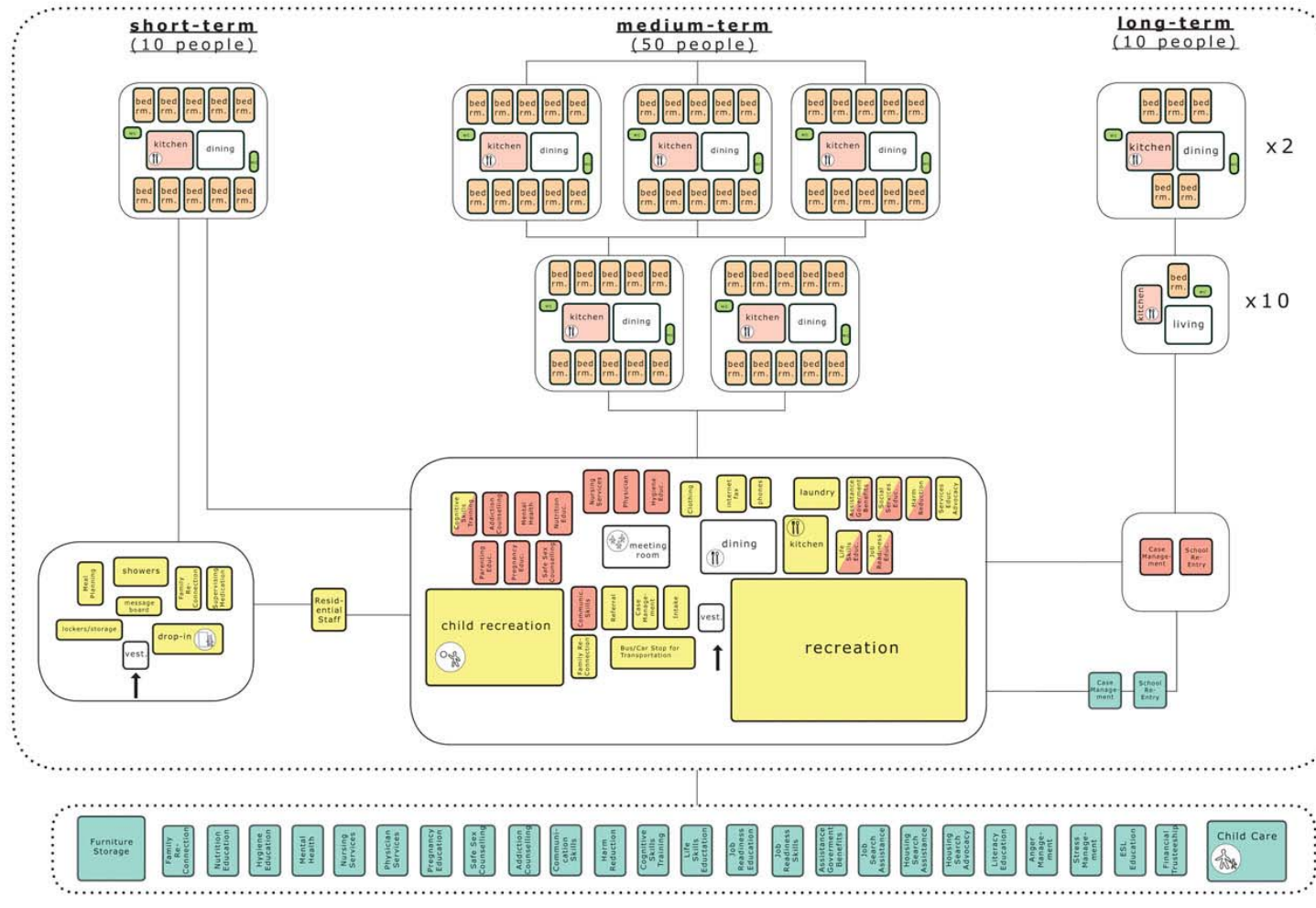
## The Shared Floor



## Congregate Living



# DYHSS PROGRAM OF SERVICES



- The DYHSS building will house youth for Short-Term (10 people), Medium-Term (50 people), and Long-Term (10 people) stays.
- The services consist of On-Site programs staffed by DYHSS, On-site programs utilizing staff from other organizations, and programs located in other parts of the region.