



Innovative Timber Ideas

DECK PROTECT®

deckprotect.com.au



COMPOSITE CARE PRODUCTS

FOR
WPC DECKING & SCREENING



Let us take care of your composite

ITI Deck Protect® has vast experience when it comes to looking after your composite wood structure with experience gained through dealing directly with trade professionals and constantly striving to improve performance and quality. ITI Deck Protect® have now released a range of high performance cleaning, colour rejuvenating and sealing products to satisfy the demands of coating exterior wood plastic composites by both commercial and domestic customers.

The Deck Protect® product range is designed to restore and highlight the natural toning and look of the composite structure whilst providing a long lasting cleaning and protective finish. All products in the range have had extensive testing, 3 year of R&D utilising the latest developments in polymer technology and have been developed with an emphasis on providing high performance with ease of application.

Deck Protect® offer this unique range of products to the wood composite industry which are designed to help maintain, protect and restore old weathered composites to original condition.



Deck Protect® Composite Clean

A low suds action, deep penetrating composite wood conditioner treatment to aid in the protection and appearance of the composite substrate by removing tannin stains, tree sap, water marks, dirt and grime, mould, fungus, food stains, oils etc. To be applied as often as required to maintain a fresh clean look to all composite structures. Refer to the rear label for mixing and application instructions.

Also used as an important first preparation step for the application of **Deck Protect® WPC Refresh** (if required) and **Deck Protect® WPC Sealer**.

Composite Clean is excellent around the house especially for cleaning oil and grease from BBQ's and concrete.



FOR USE ON	Composite decking, hand rails, walkways, ramps, steps, screening, gates, furniture. In fact any composite structure new or seasoned, coated or uncoated.
REMOVES	Food stains, Oil, Tree sap, Dirt and grime, Mildew and Mild oxidation.
COVERAGE	3.5 Litre of Composite Clean dilutes to clean approx 400m ² at 12:1 mix ratio. Refer to rear label. When diluted with water will cover approx 10m ² .
APPLICATION	Garden hose, mop and bucket, stiff broom, soft broom. (with hose outlet)
CONTAINER SIZE	1 litre, 3.5 litre
CLEAN UP	Fresh water



Deck Protect® WPC Refresh

Deck Protect® WPC Refresh is a solvent based UV resistant stain designed for internal and external composite wood surfaces to produce a rich natural light fast transparent look. Product will rejuvenate aged, colour reduced, stained, or marked composite wood.

WPC Refresh is designed to be applied by rag, lambswool applicator, brush or spray applied delivering rich uniform natural looking colours, whilst being fade resisting when exposed to direct sunlight. **WPC Refresh** is designed to be over coated with a minimum of 2 coats of **Deck Protect® WPC Sealer Gloss** or **Matt** prior to walking on the decking.

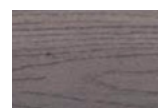
FOR USE ON	Composite decking, hand rails, walkways, ramps, steps, screening, gates, furniture. In fact any composite structure new or seasoned, coated or uncoated.
COLOURS	Black Bean, Jarrah, Silver Gum, Sahara.
APPLICATION	Rag, lambswool applicator, brush or spray applied.
No. OF COATS	1
DRY TIME	2 – 4 hours depending on application process and may take up to 12 hours with excessive film build and lower temperatures.
TOPCOAT	WPC Clear Sealer must be applied after sufficient dry time has been allowed. Do not apply the Sealer if the WPC Refresh is wet.
SPREAD RATE	Up to 25m ² per Litre depending on the application process.
CONTAINER SIZE	1 Litre, 2 Litre, 4 Litre
CLEAN UP	Mineral Turpentine



BLACK BEAN



JARRAH



SILVER GUM



SAHARA





Deck Protect® WPC Sealer

Deck Protect® WPC Sealer is a water-borne protective treatment designed for use over composite wood products as a direct sealer to protect the composite or as part of a rejuvenating colour system with **Deck Protect® WPC Refresh**.

WPC Sealer has been designed to impart the natural look or wet look on composite substrates. It will protect the composite against food, oil stains, dirt retention and mould/fungal ingress and is water repellent. **WPC Sealer** is great for coating alfresco flooring around BBQ's etc.

A quick and easy to use solution, that will enhance the beauty of the composite surface locking in pigmentation and slowing down the aging process due to effects of water and UV exposure.

Periodically wash with **Deck Protect® Composite Clean** to remove any surface stains keeping the sealer looking at its best and helping to extend the life of the coating.

Deck Protect® WPC Traction

Deck Protect® WPC Traction - Sealer with grit additive is a water-borne protective treatment mixed with fine slip resistant additive for use over Wood Plastic Composite structures as a direct sealer to protect the composite or as part of a rejuvenating colour system with **Deck Protect® WPC Refresh**.

Deck Protect® WPC Traction has been designed to be applied to create a full slip resistant surface as per AS/NZS 4586-2013 for wet surfaces. The standard slip resistance level is to P4 rating for horizontal surfaces as tested by ATTAR, accreditation number 2735. With the addition of extra medium grit a full P5 for Ramps, Stairs and high volume foot traffic areas is achieved. This will have a high grip level and will be more visible.

WPC Traction should be washed periodically with **Deck Protect® Composite Clean** to remove any surface stains to keep the Sealer looking at it's best. Use a soft bristle broom.

FOR USE ON	Composite decking, hand rails, walkways, ramps, steps, screening, gates, furniture. In fact any composite structure new or seasoned.
COLOUR	Clear
GLOSS LEVEL	Gloss or Matt
APPLICATION	Lambswool Applicator, spray, brush or roller.
No. OF COATS	Minimum 2. Maximum 3.
DRY TIME	1 – 2 Hours
COVERAGE	Up to 20m ² per Litre depending on the surface conditions and age.
EXT. EXPOSURE	In full sun up to 2 years and under cover up to 4 years.
CONTAINER SIZE	2 litre, 4 Litre, 10 Litre
CLEAN UP	Fresh water



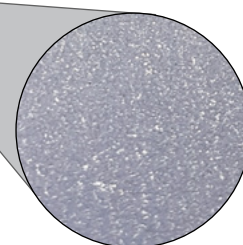
BEFORE | AFTER



FOR USE ON	Composite decking, walkways, ramps and steps.
COLOUR	Clear
GLOSS LEVEL	Matt
APPLICATION	Roller (Mohair or Microfibre), Brush.
No. OF COATS	3
WET SLIP LEVEL	P4 / P5 (AS/NZS 4586-2013)
DRY TIME	1 – 2 Hours
COVERAGE	Up to 20m ² per Litre depending on the surface conditions and age.
EXT. EXPOSURE	In full sun up to 2 years and under cover up to 4 years depending on volume of foot traffic.
CONTAINER SIZE	4 Litre, 10 Litre
CLEAN UP	Fresh water



The micro grit embedded in the Sealer helps prevent slips and falls on composite surfaces

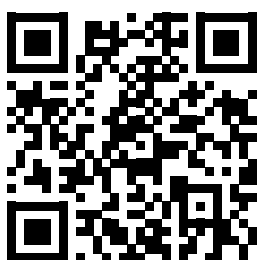
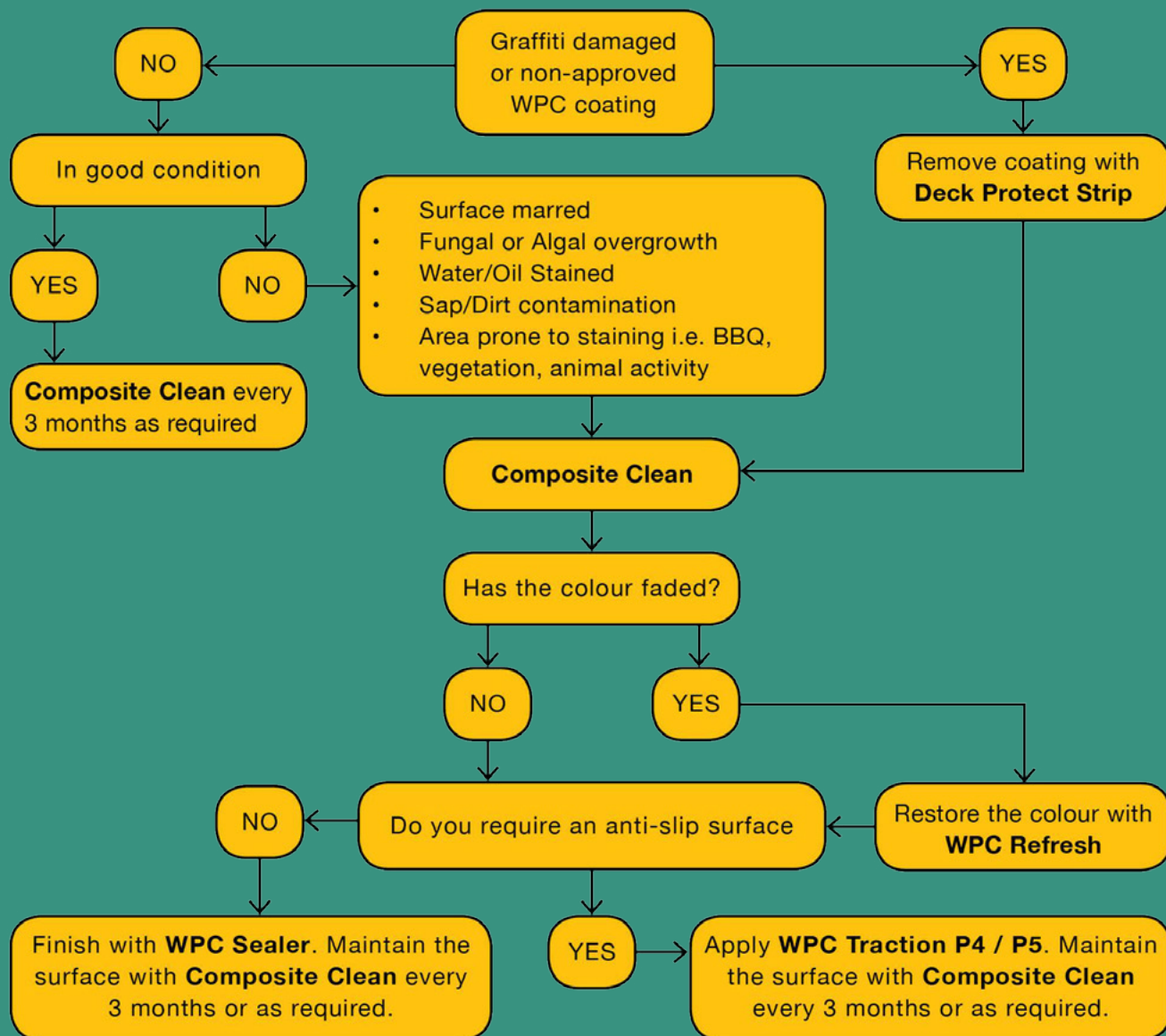


TIP Deck Protect range has been tested and is suitable for use on first generation HDPE Wood Composites.

Deck Protect products are not suitable for second generation capped composite product.

If you are unsure of your composite products, refer to your builder or place of purchase before use.

Do not apply on an oiled or waterproof treated surface.



NEW SOUTH WALES / ACT

ITI (NSW) - Sydney
59 Dunheved Circuit,
St Marys NSW 2760

P 02 8805 5000
E sales@iti.net.au

ITI (NSW) - Newcastle
19 Nelson Rd,
Cardiff NSW 2285

P 02 4953 7666
E sales@iti.net.au

John Cook & Sons
116 Links Rd,
St Marys NSW 2760

P 02 9833 0355
E sales@johncook.net.au

QUEENSLAND

ITI (QLD) - Brisbane
62 Creek Street,
Bundamba QLD 4304

P 07 3436 8400
E sales@iti.net.au

ITI (QLD) - Townsville
46 - 50 Perkins Street,
West Townsville QLD 4810

P 07 4724 5509
E sales@iti.net.au

VICTORIA & TASMANIA

ITI (VIC) - Melbourne
445 - 469 Grieve Pde
Altona Nth VIC 3025

P 03 9392 8400
E sales@iti.net.au

SOUTH AUSTRALIA & NORTHERN TERRITORY

ITI (SA) - Adelaide
82-94 Grand Trunkway
Port Adelaide SA 5015

P 08 8447 0400
E sales@iti.net.au

WESTERN AUSTRALIA

ITI (WA) - Perth
49 Hope Valley Road,
Naval Base WA 6165

P 08 9411 9700
E sales@iti.net.au

NEW ZEALAND

ITI (NZ) - Auckland & Christchurch
P 0800 ITI NZL
E sales@iti.net.nz

Distributed by: