

Product Data Sheet

Model No: IT422-BLS



Length	1300mm
Width	700mm
Height	855mm
Tub Size	625mm x 1300mm x 700mm
Tub Capacity	450 litre (Colours available)
Lifter	Spring loaded 50KG STD
Castors	4 x 125mm / 2 Brake
Push Effort	3Kg
Pull Effort	3Kg
Weight	45Kg



Colours Available
(No extra charge for coloured)



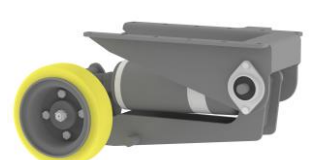
RED

BLUE

NATURAL

GREEN

Available with 25KG or 50 KG springs lifter
Also available with soft outdoor wheels
Also available with Solid lid
Also available Motorised



Polymedic are Australia's Premier trolley manufacturers with all products manufactured here in Australia. Made from our own special formulated composite plastic makes them lighter than metal trolleys, they are easier to push, yet strong and reliable and while keeping within OH&S standards, all Polymedic trolleys are designed and built with the end user in mind. All Polymedic trolleys can be custom modified to suit your requirements. Polymedic use and recommend only quality castors on all our products.

All our products come with a 3 Year warranty on frame and castors.



www.polymedic.com.au

sales@polymedic.com.au

Ph: 1800 426 856

Ph: +61 (07) 5539 3633