

rotacaster[™]
the wheel 2.0

Conveyor & Materials Transfer Solutions



Rotacaster multi-directional conveyor transfer wheels

Built to provide the robustness and ride quality of an industrial floor wheel, the Rotacaster's patented construction and 360° maneuverability has brought a new level of performance to conveyor transfer and inverted multi-directional movement applications.

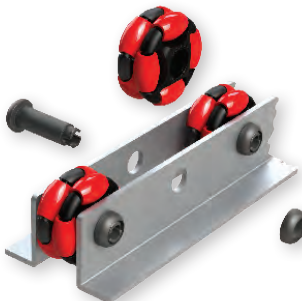
Simple mounting options make them easy to adapt to existing systems, injection molded cup mounts provide the perfect alternative to a ball transfer unit.

Key benefits

- A **compact size** allows more wheels per m² and minimal spacing between adjacent rollers for:
 - Greater load distribution
 - Reduced soft surface indentation
 - Ability to handle a greater range of surface profiles
- A **tough, robust**, injection molded wheel frame combines wheel body and roller axles in one part for:
 - Improved impact resistance
 - Higher load capacity
 - Reduced risk of downtime due to lost rollers
- A **rust-free**, full polymer wheel (no steel pins or inserts) makes it ideal for:
 - Corrosive environments
 - X-ray or scanning applications



48mm rotacaster channel mounted



48mm rotacaster angle mounted



More wheels per m² enables greater load distribution and the ability to handle a wide range of surface profiles.



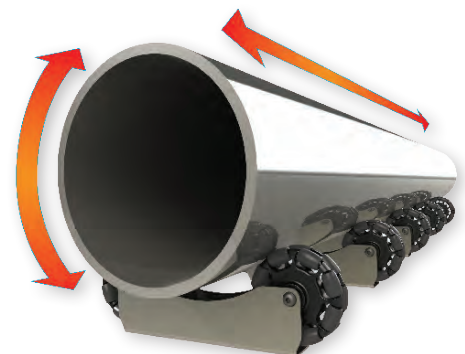
Inverted cups provide a full polymer alternative to ball transfer units.



Robust construction delivers improved impact resistance and higher load capacity.

Other benefits

- Simple, fast **mounting alternatives**
- **Lighter and stronger** than similar wheels
- **Quiet & smooth** ride
- Choice of roller options for:
 - protection of surfaces
 - greater traction for driven applications
 - different climatic environments



Simultaneous feed and rotation capability for pipe rolling applications.